



Announcements

- Due by today
 - * Chapters 1-4 in *Fluency*
- For Friday
 - * Read Chapter 5



NETWORKING WRAP-UP



Video

- History of the Internet...



One-liners

- Most important point in this video?



Protocols

- List as many as you can think of....
 - * Example—http



WWW vs. Internet

- Internet is all the wires, routers, gateways, servers—all using TCP/IP to transfer packets
- Many different protocols use the Internet
 - * ftp, email, chat, IM, Skype, VoIP, http

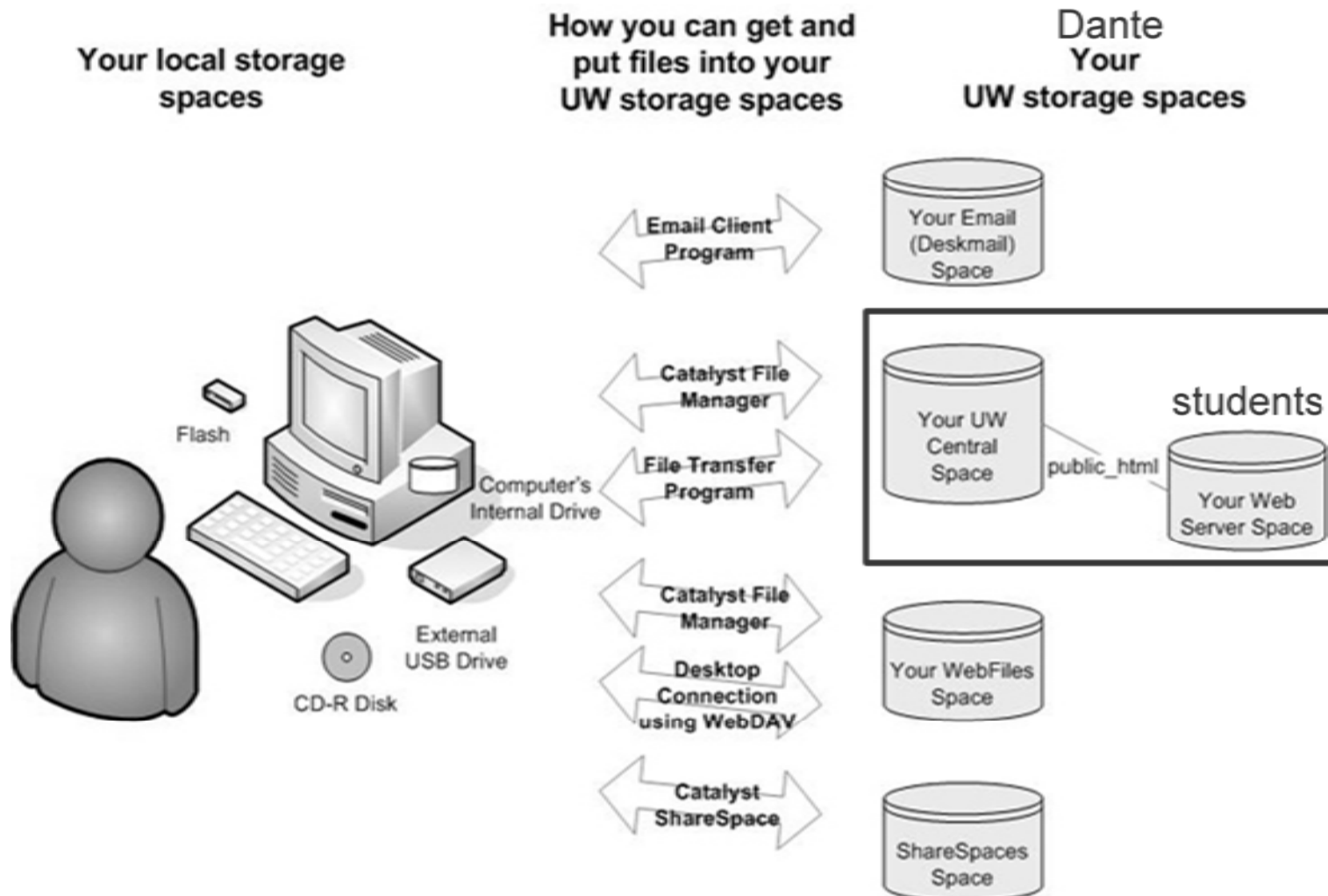


WWW vs. Internet

- WWW is the part of the Internet that uses the http protocol
 - * Web servers and the Web pages they store and serve
 - * Web browsers are the clients

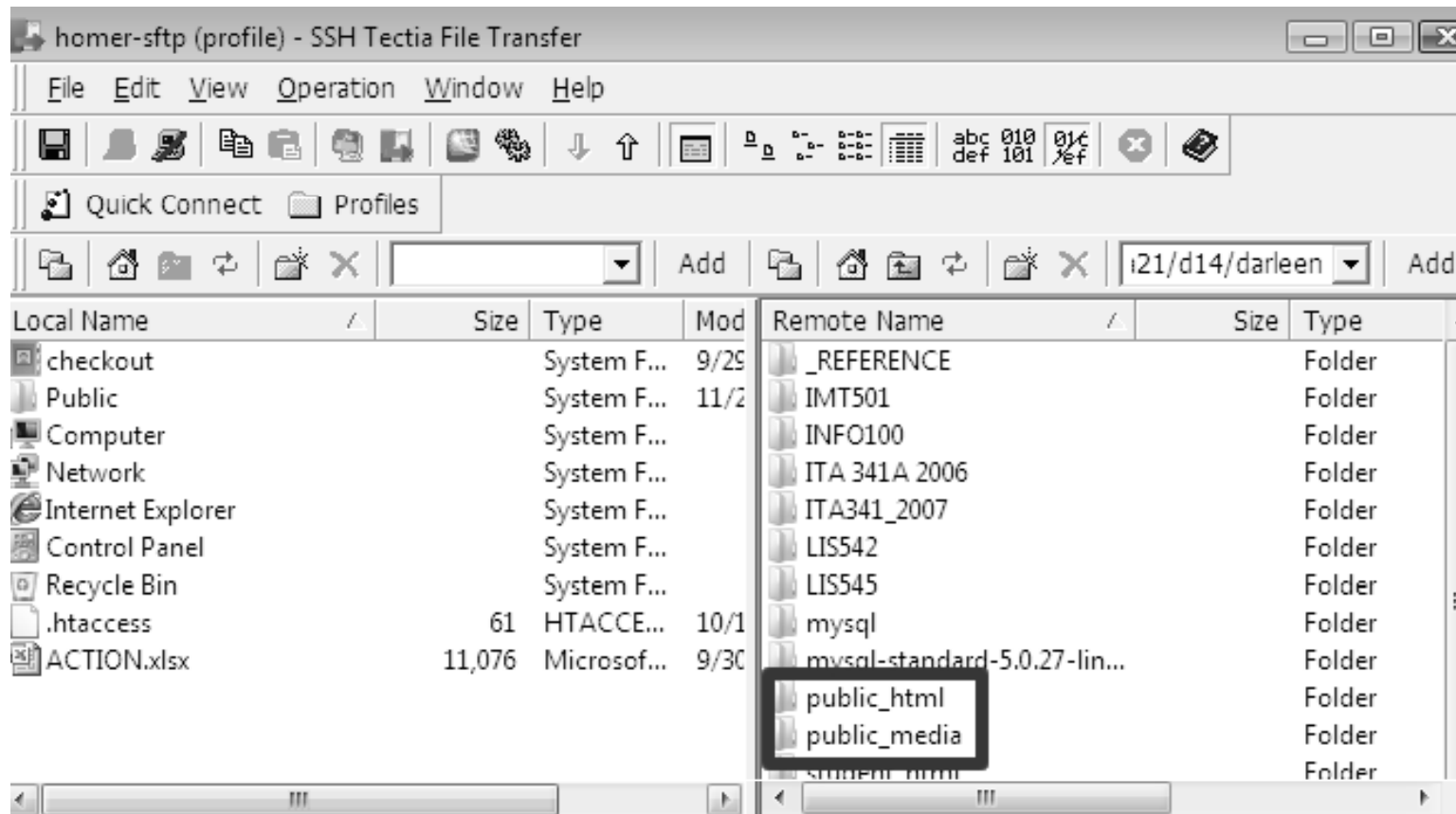


Your UW Storage Space





Your Web Files





HTTP

- Hypertext Transfer Protocol
 - * Understands how to interpret URLs
 - Uniform Resource Locators
 - * Divides URL into server and pathname



HTTP

<http://faculty.washington.edu/daclem/LIS549sp08/index.html>



HTTP

<http://faculty.washington.edu/daclem/LIS549sp08/index.html>

PROTOCOL
(Web)



HTTP

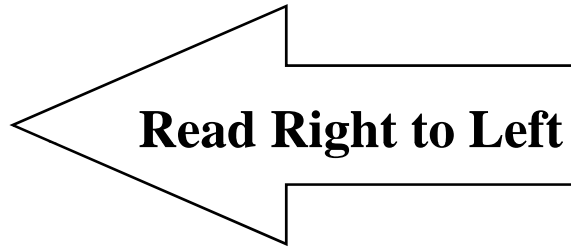
<http://faculty.washington.edu/daclem/LIS549sp08/index.html>

PROTOCOL

SERVER



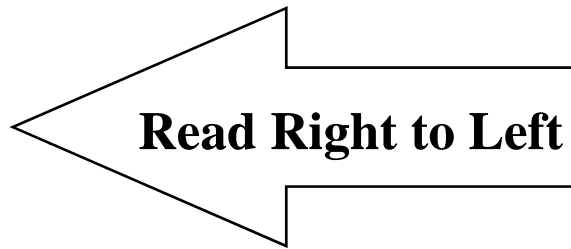
HTTP



http://faculty.washington.edu/daclem/LIS549sp08/index.html	
PROTOCOL	SERVER



HTTP



<http://faculty.washington.edu/daclem/LIS549sp08/index.html>

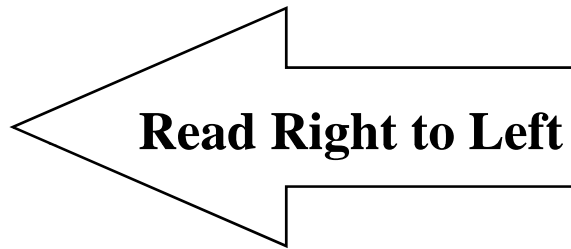
PROTOCOL

SERVER

1. Domain: edu



HTTP



<http://faculty.washington.edu/daclem/LIS549sp08/index.html>

PROTOCOL

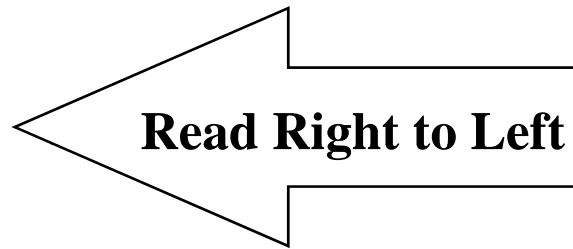
SERVER

1. Domain: edu

2. Subdomain: washington



HTTP



<http://faculty.washington.edu/daclem/LIS549sp08/index.html>

PROTOCOL

SERVER

- 1. Domain: edu**
- 2. Subdomain: washington**
- 3. Server: faculty**



HTTP

http://faculty.washington.edu/daclem/LIS549sp08/index.html		
PROTOCOL	SERVER 1. Domain: edu 2. Subdomain: washington 3. Server: faculty	PATHNAME



HTTP



http://faculty.washington.edu/daclem/LIS549sp08/index.html		
PROTOCOL	SERVER	PATHNAME
	<ol style="list-style-type: none">1. Domain: edu2. Subdomain: washington3. Server: faculty	



HTTP



http://faculty.washington.edu/daclem/LIS549sp08/index.html		
PROTOCOL	SERVER 1. Domain: edu 2. Subdomain: washington 3. Server: faculty	PATHNAME 4. Account: daclem



HTTP



http://faculty.washington.edu/daclem/LIS549sp08/index.html		
PROTOCOL	SERVER 1. Domain: edu 2. Subdomain: washington 3. Server: faculty	PATHNAME 4. Account: daclem 5. Folder: LIS549sp08



HTTP



http://faculty.washington.edu/daclem/LIS549sp08/index.html		
PROTOCOL	SERVER 1. Domain: edu 2. Subdomain: washington 3. Server: faculty	PATHNAME 4. Account: daclem 5. Folder: LIS549sp08 6. File: index.html



HTTP



http://faculty.washington.edu/daclem/LIS549sp08/index.html		
PROTOCOL	SERVER 1. Domain: edu 2. Subdomain: washington 3. Server: faculty	PATHNAME 4. Account: daclem 5. Folder: LIS549sp08 6. File: index.html



Finding Server and Pathname

<http://courses.washington.edu/wtcampus/autumn/>

- **Finding the Server:**
 1. Domain: *edu*
 2. Subdomain: *Washington*
 3. Server: *courses*
- **Finding the Pathname:**
 4. Account: *wtcampus*
 5. Directory: *autumn*



Activity

- Dissecting URLs....



Networks....

- To be continued on Friday