

Wrap Up

We talked about

- Filters
- Edges
- Corners
- Interest Points
- Descriptors
- Image Stitching
- Stereo
- SFM

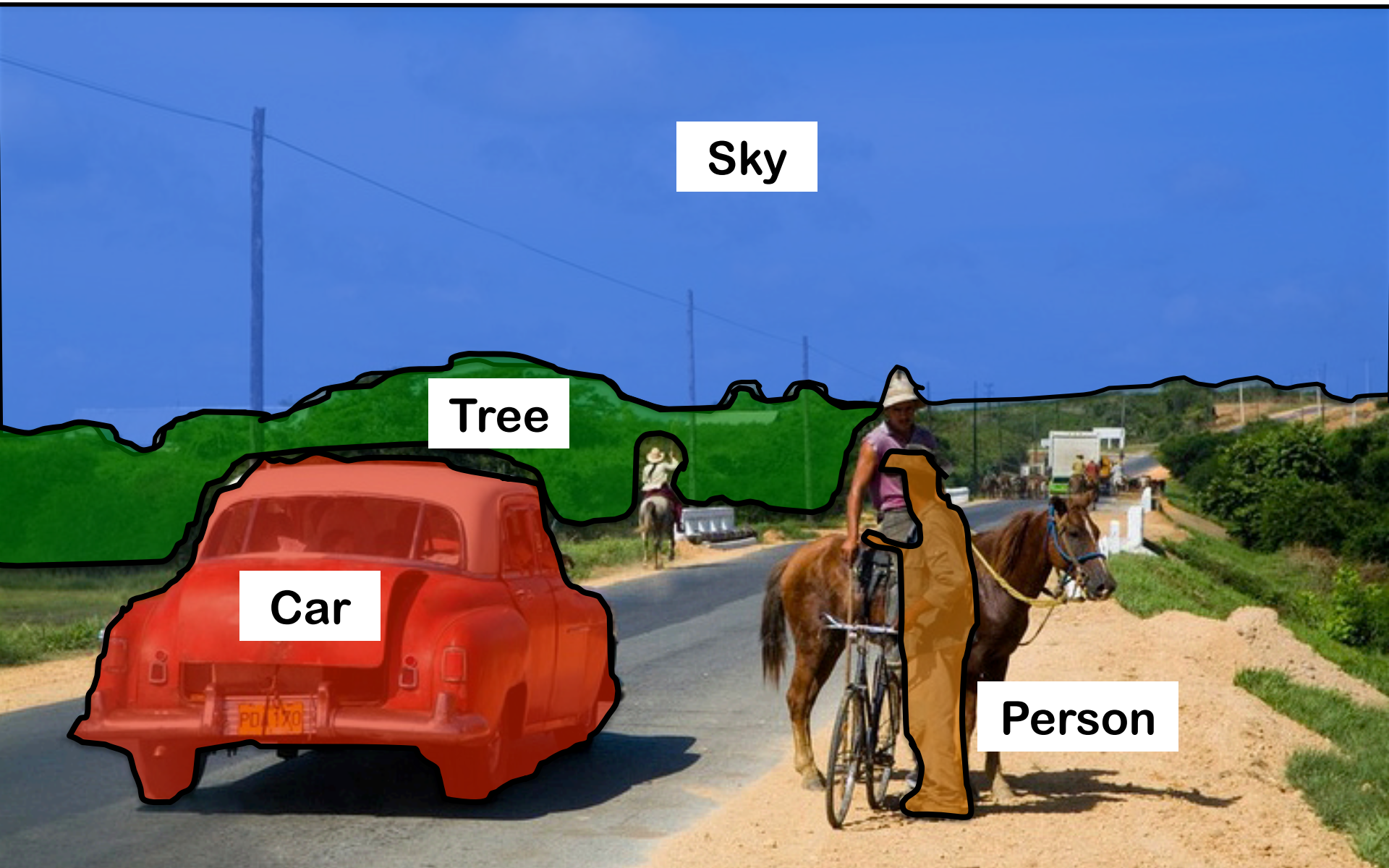
We talked about

- Reconstruction
- Flow
- Face Detection
- Face Recognition
- Pedestrian Detection
- Part-Based Recognition
- ...

What else?

- Several other interesting stuff that we wanted to talk about them

Image Segmentation



Sky

Tree

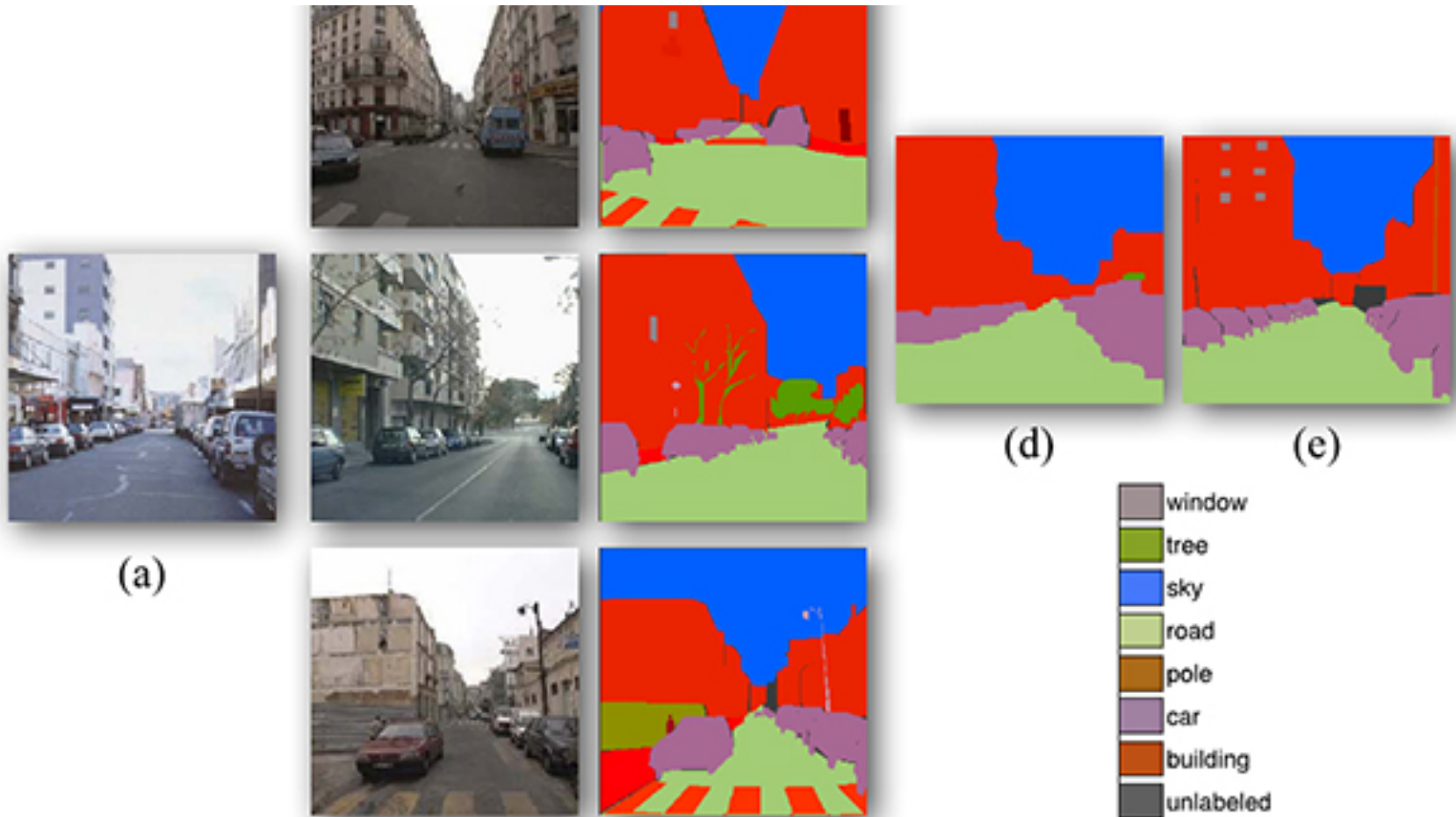
Car

Person

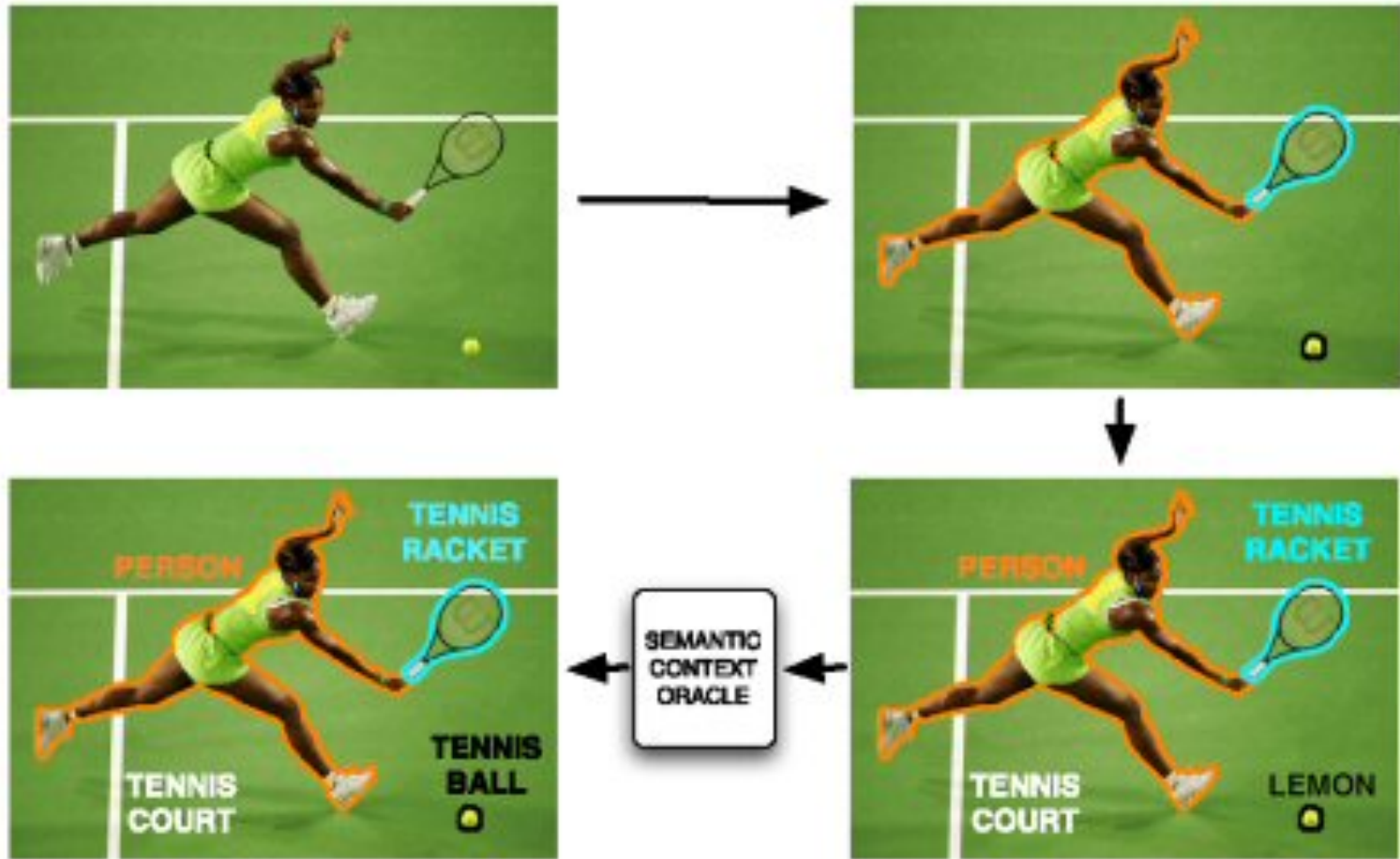




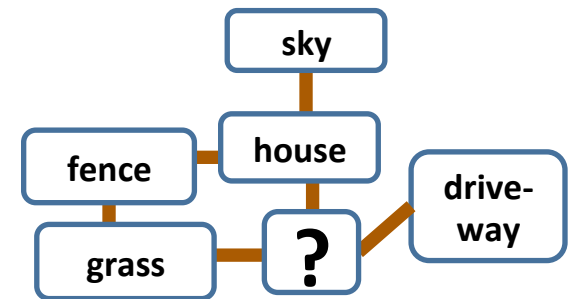
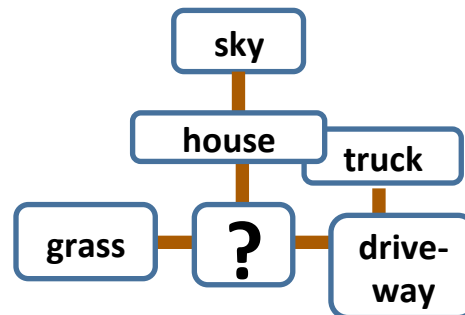
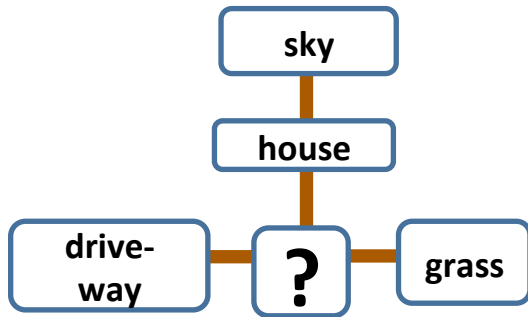
Scene Parsing



Context



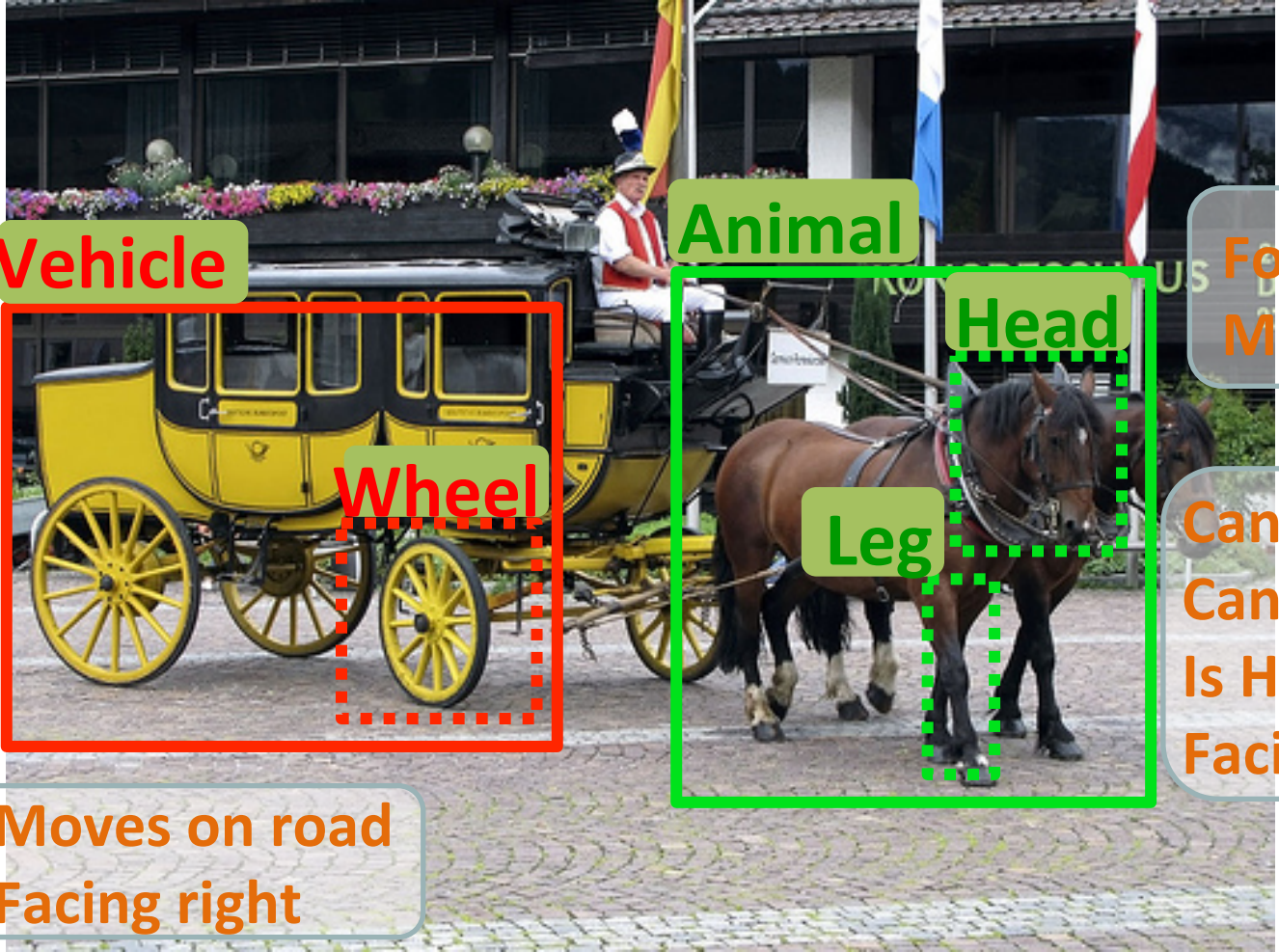
Context-aware visual discovery



Context in supervised recognition:

[Torralba 2003], [Hoiem et al. 2006], [He et al. 2004], [Shotton et al. 2006], [Heitz & Koller 2008], [Rabinovich et al. 2007], [Galleguillos et al. 2008], [Tu 2008], [Parikh et al. 2008], [Gould et al. 2009], [Malisiewicz & Efros 2009], [Lazebnik 2009]

Attributes



Vehicle

Animal

Head

Wheel

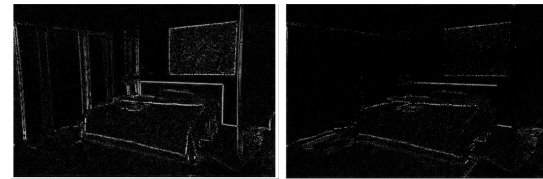
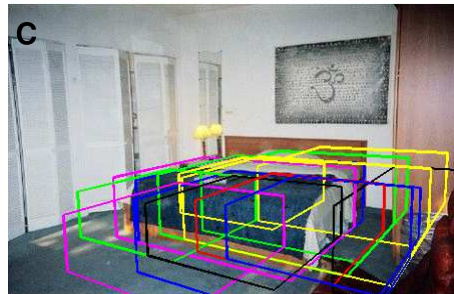
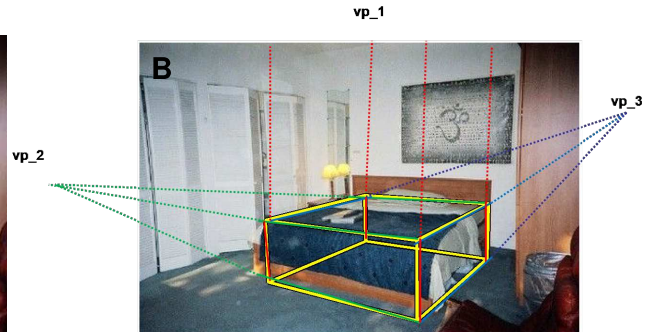
Leg

Four-legged
Mammal

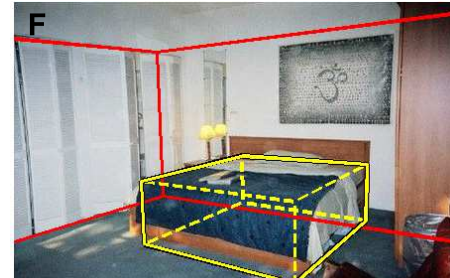
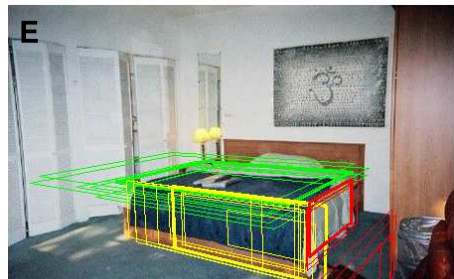
Can run
Can Jump
Is Herbivorous
Facing right

Moves on road
Facing right

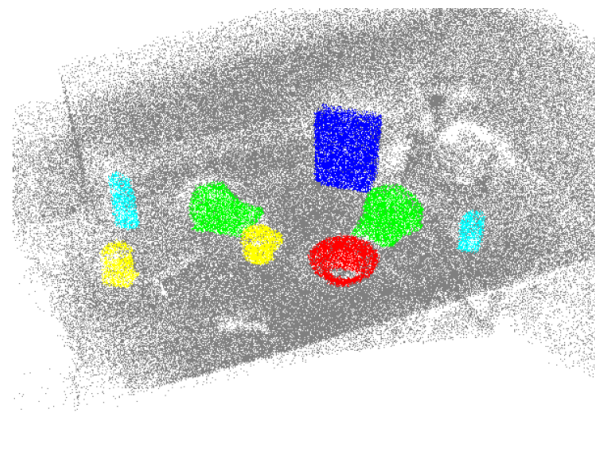
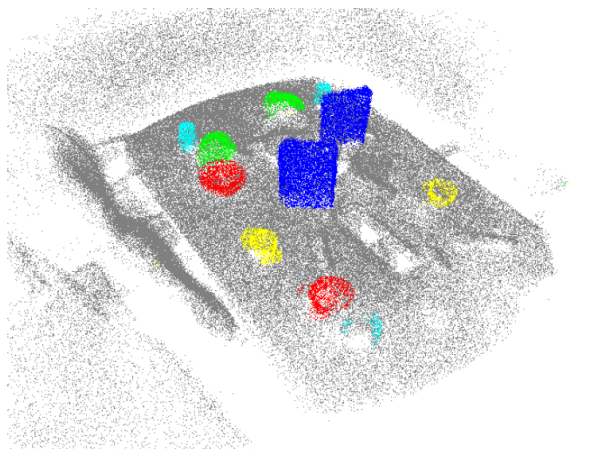
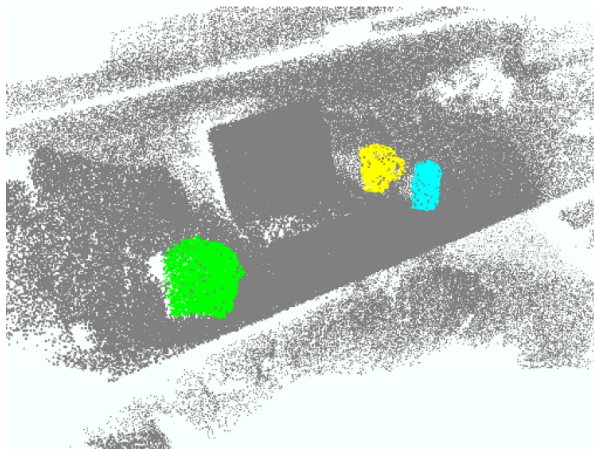
3D Recognition



D



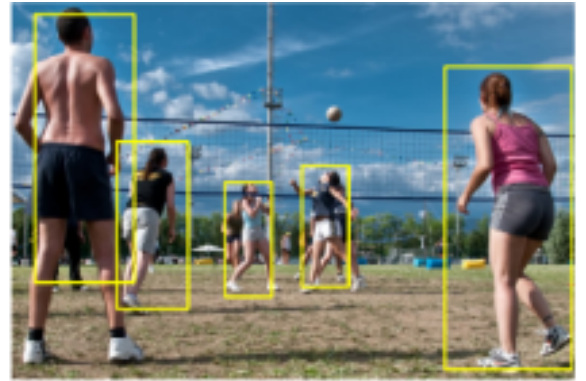
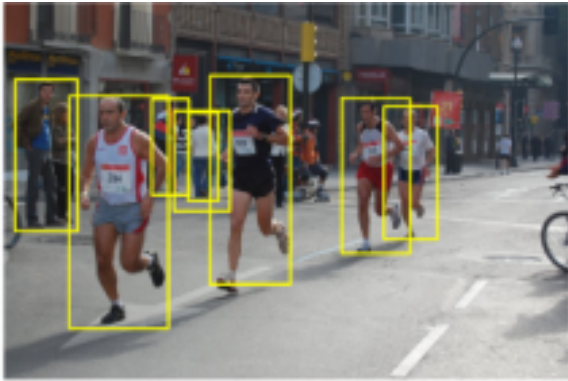
RGB-D



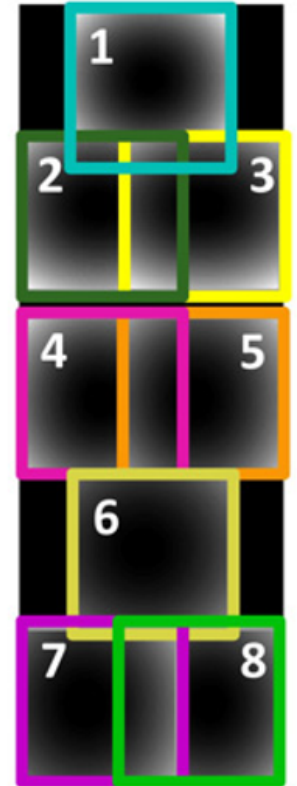
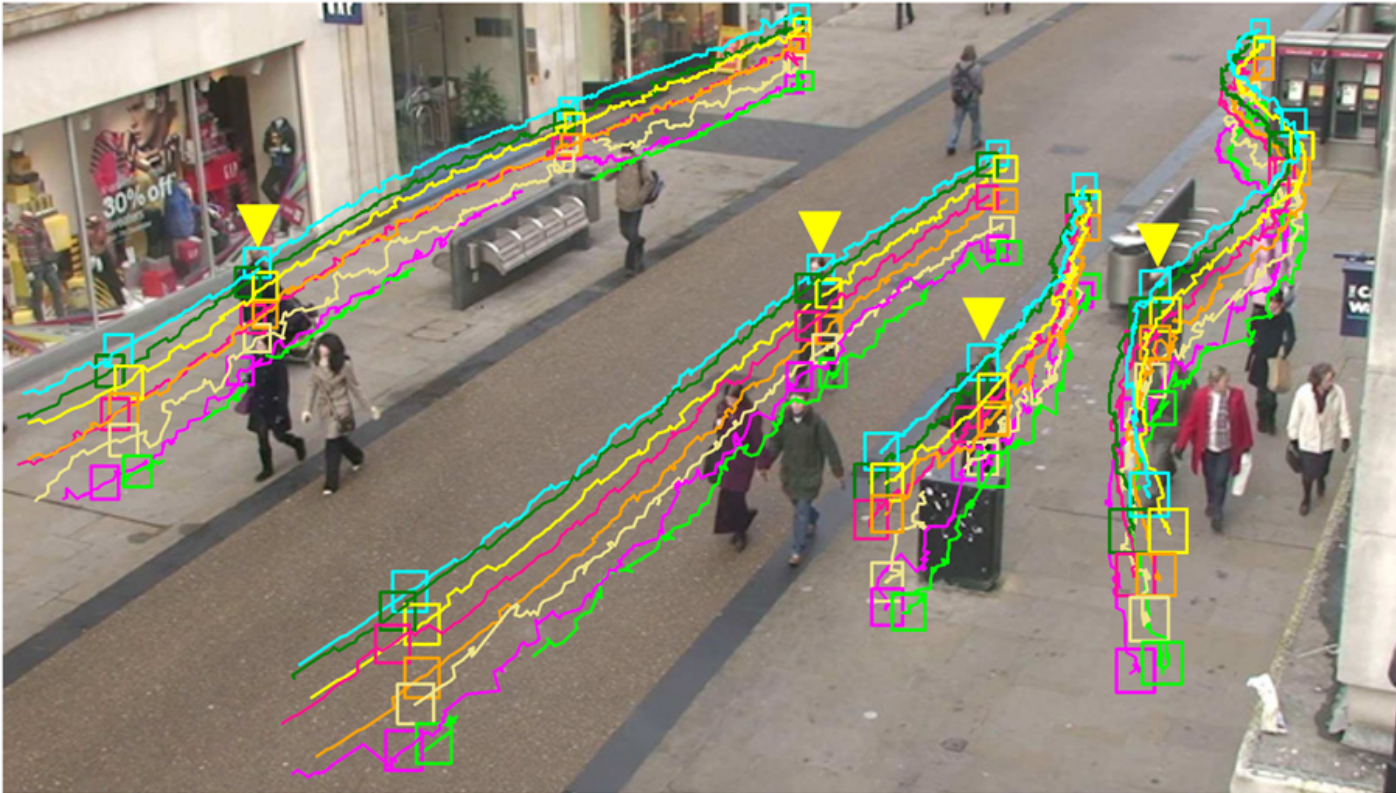
Pose Estimation



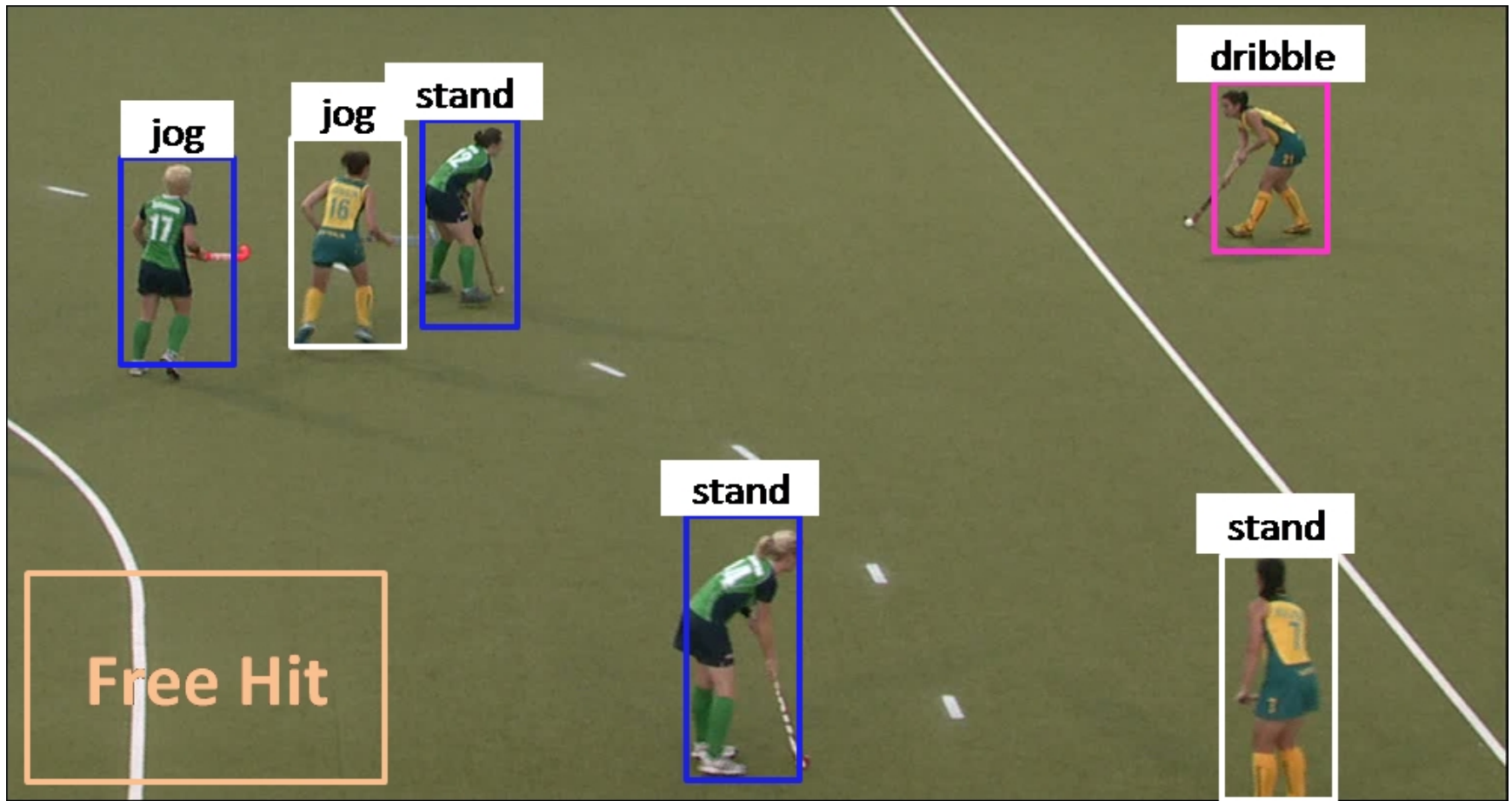




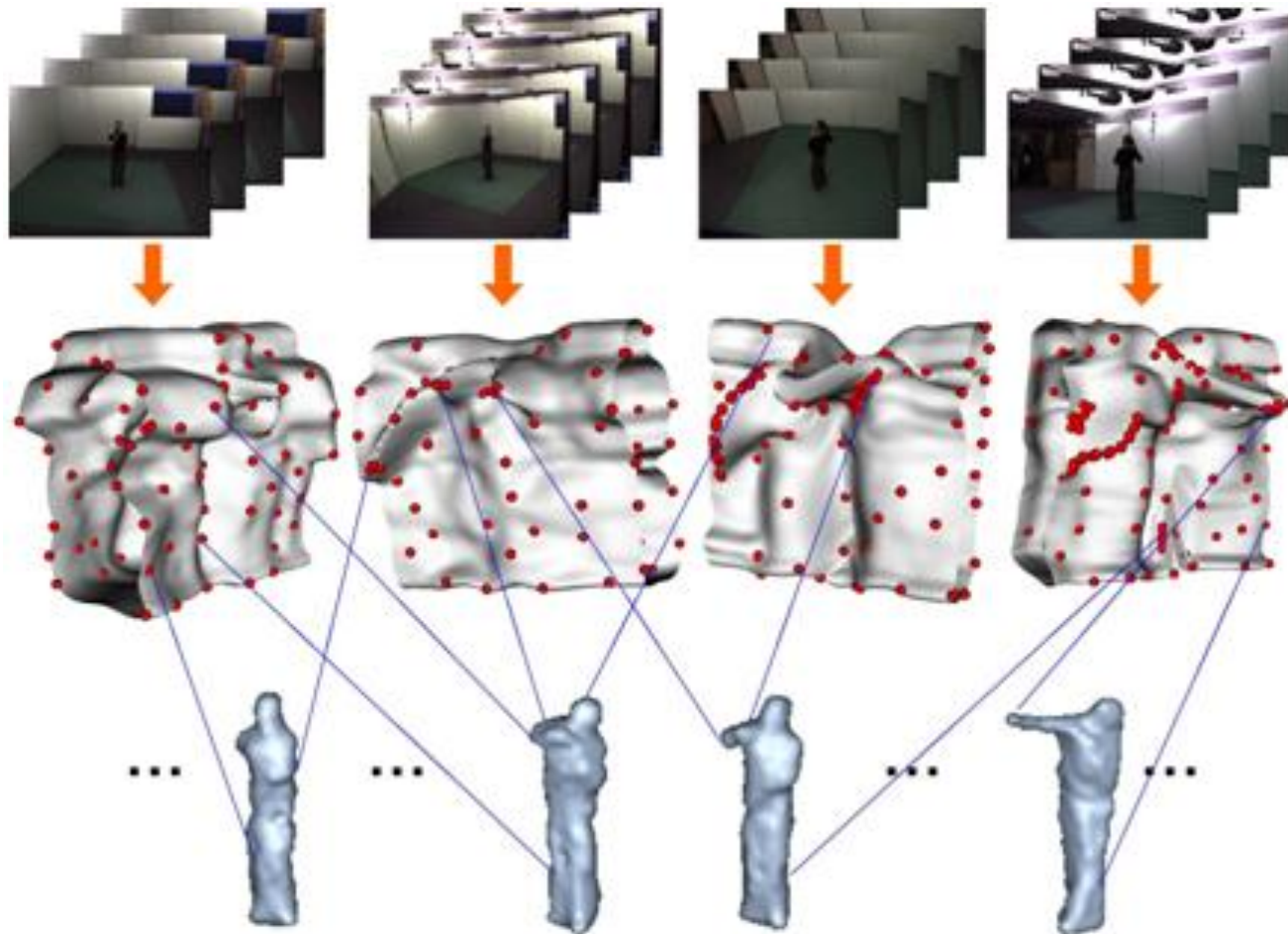
Tracking



Action Recognition



Action Recognition



Egocentric Vision

