

Database Systems CSE 414

Lecture 17: E/R Diagrams (4.1-6) and Constraints (7.1-2)

CSE 414 - Spring 2017

1

Announcements

- HW5 due on Thursday
– (was Tuesday before)
- WQ6 due on Sunday

CSE 414 - Spring 2017

2

Database Design

What it is:

- Starting from scratch, design the database schema:
relation, attributes, keys, foreign keys, constraints etc

Why it's hard:

- The database will be in operation for years.
- Updating the schema in production is very hard:
 - schema change modifications are expensive (why?)
 - making the change without introducing any bugs is hard
 - this part is, by far, the most important consideration in practice

CSE 414 - Spring 2017

3

Database Design

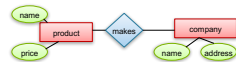
- Consider issues such as:
 - What entities to model
 - How entities are related
 - What constraints exist in the domain
- Several formalisms exists
 - We discuss E/R diagrams
- Reading: Sec. 4.1-4.6

CSE 414 - Spring 2017

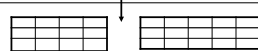
4

Database Design Process

Conceptual Model:



Relational Model:
Tables + constraints
And also functional dep.



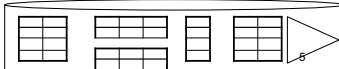
Normalization:
Eliminates anomalies



Conceptual Schema

Physical storage details

Physical Schema



Entity / Relationship Diagrams

- Entity set = a class
– An entity = an object
- Attribute
- Relationship

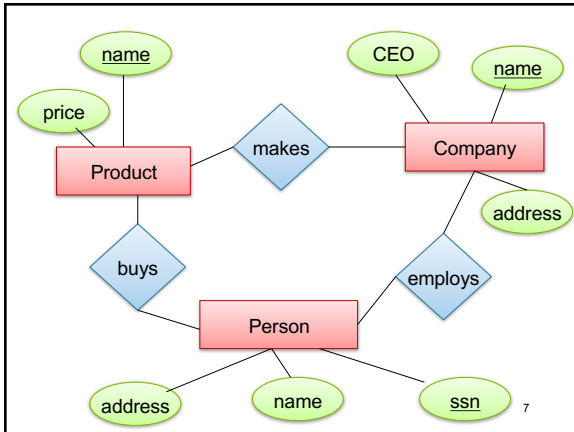
Product

city

makes

CSE 414 - Spring 2017

6



Keys in E/R Diagrams

- Every entity set must have a key

CSE 414 - Spring 2017 8

What is a Relation(ship)?

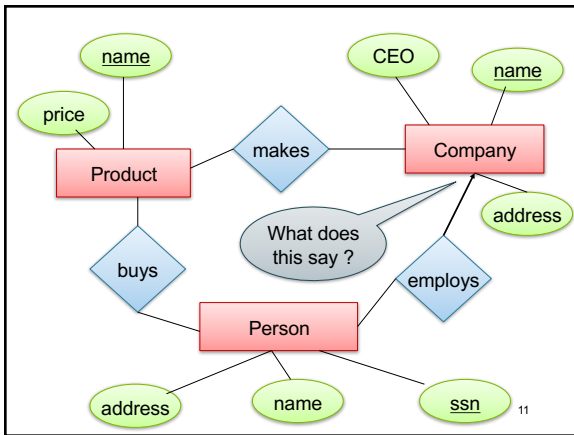
- A mathematical definition:
 - if A, B are sets, then a relation R is a subset of $A \times B$
- $A = \{1, 2, 3\}$, $B = \{a, b, c, d\}$
 $A \times B = \{(1,a), (1,b), \dots, (3,d)\}$
 $R = \{(1,a), (1,c), (3,b)\}$
- **makes** is a subset of **Product** \times **Company**:

CSE 414 - Spring 2017 9

Multiplicity of E/R Relations

- one-one:
- many-one:
- many-many:

CSE 414 - Spring 2017 10



Multi-way Relationships

How do we model a purchase relationship between buyers, products and stores?

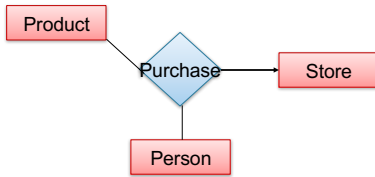
Can still model as a mathematical set (Q. how?)

A. As a set of triples $\subseteq \text{Person} \times \text{Product} \times \text{Store}$

12

Arrows in Multiway Relationships

Q: What does the arrow mean ?



A: A given person buys a given product from at most one store

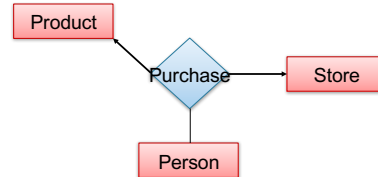
[Arrow pointing to E means that if we select one entity from each of the other entity sets in the relationship, those entities are related to at most one entity in E]

CSE 414 - Spring 2017

13

Arrows in Multiway Relationships

Q: What does the arrow mean ?

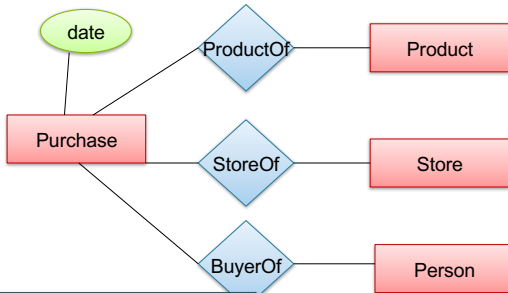


A: A given person buys a given product from at most one store AND every store sells to every person at most one product

CSE 414 - Spring 2017

14

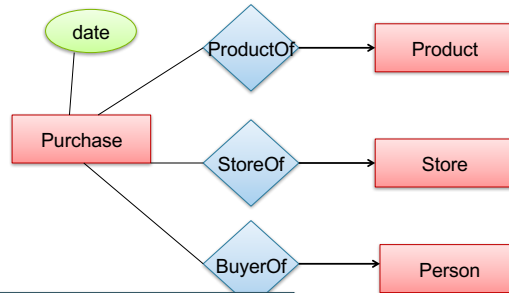
Converting Multi-way Relationships to Binary



Arrows go in which direction?

15

Converting Multi-way Relationships to Binary

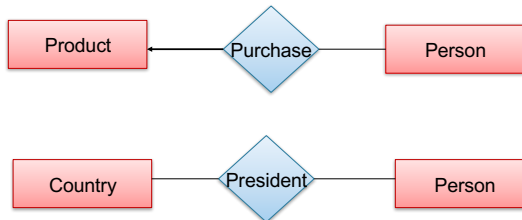


Make sure you understand why!

16

3. Design Principles

What's wrong?

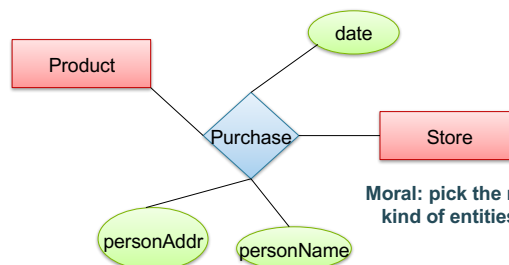


Moral: be faithful to the specifications of the app!

CSE 414 - Spring 2017

17

Design Principles: What's Wrong?

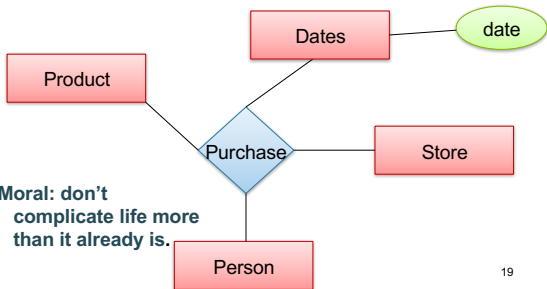


Moral: pick the right kind of entities.

CSE 414 - Spring 2017

18

Design Principles: What's Wrong?



19

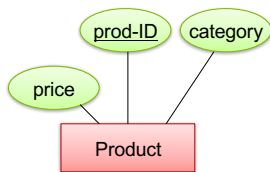
From E/R Diagrams to Relational Schema

- Entity set → relation
- Relationship → relation

CSE 414 - Spring 2017

20

Entity Set to Relation

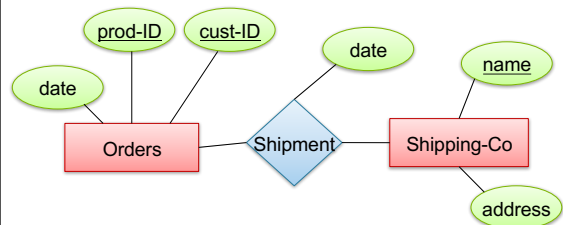


Product(prod-ID, category, price)

prod-ID	category	price
Gizmo55	Camera	99.99
Pokemn19	Toy	29.99

21

N-N Relationships to Relations

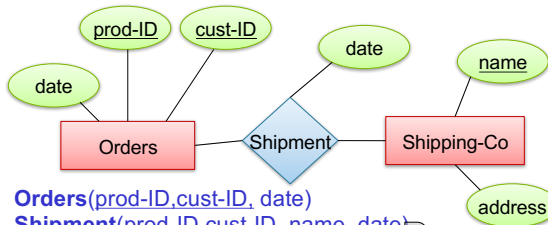


Represent this in relations

CSE 414 - Spring 2017

22

N-N Relationships to Relations



Orders(prod-ID, cust-ID, date)

Shipment(prod-ID, cust-ID, name, date)

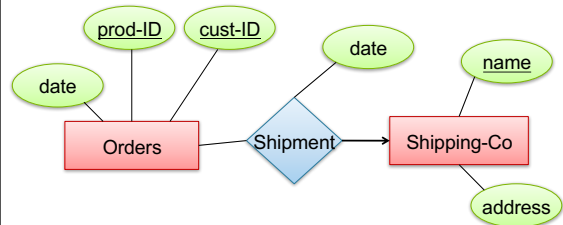
Shipping-Co(name, address)

prod-ID	cust-ID	name	date
Gizmo55	Joe12	UPS	4/10/2011
Gizmo55	Joe12	FEDEX	4/9/2011

CSE 414 - Spring 2017

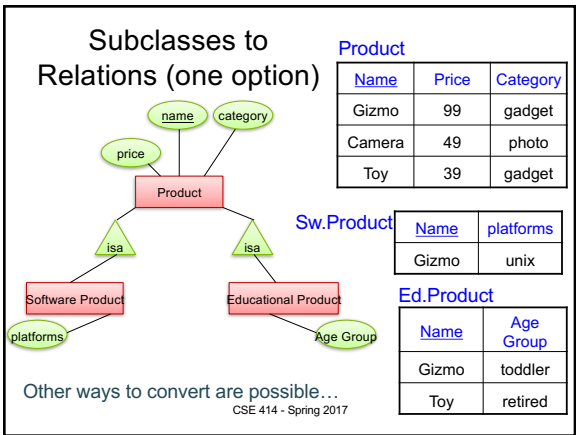
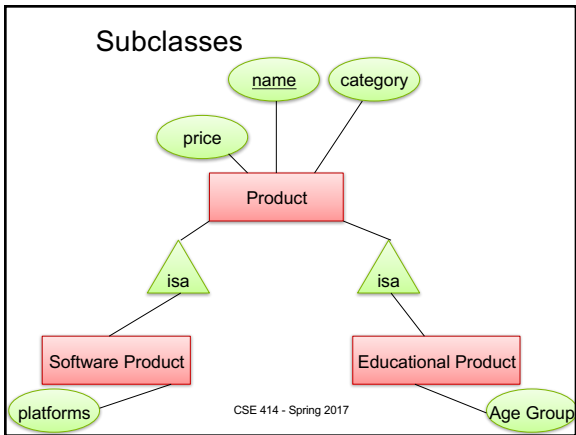
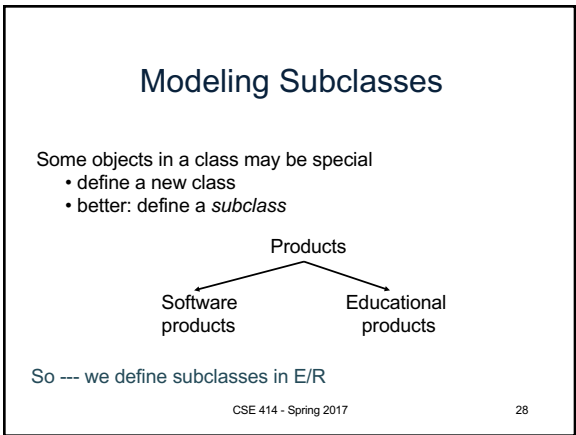
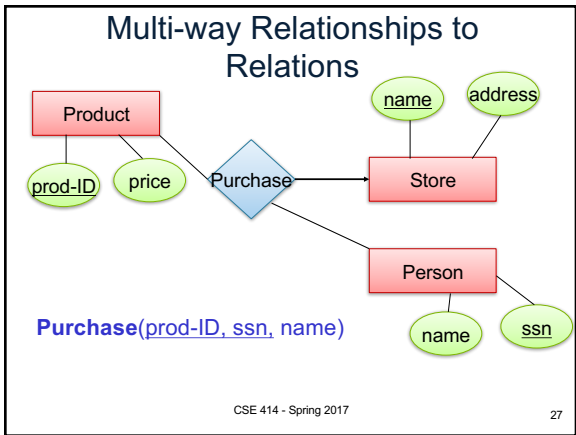
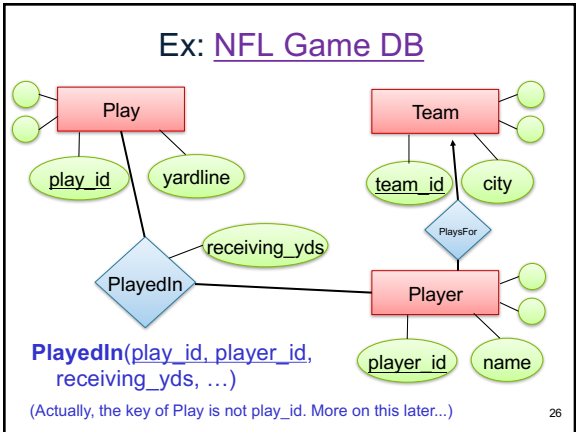
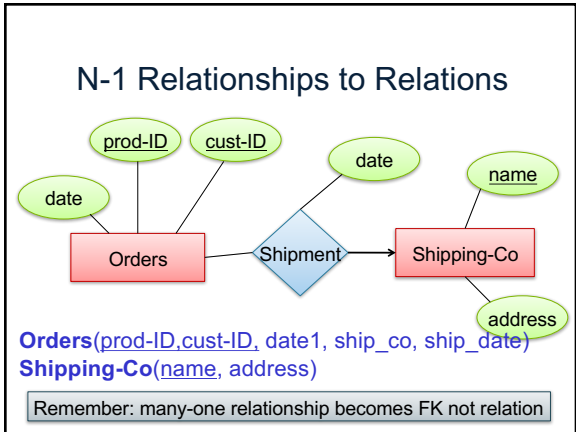
24

N-1 Relationships to Relations

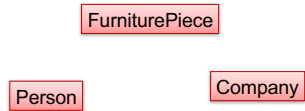


Represent this in relations

CSE 414 - Spring 2017



Modeling Union Types with Subclasses



Say: each piece of furniture is owned either by a person or by a company

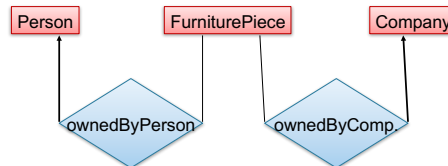
CSE 414 - Spring 2017

31

Modeling Union Types with Subclasses

Say: each piece of furniture is owned either by a person or by a company

Solution 1. Acceptable but imperfect (What's wrong?)

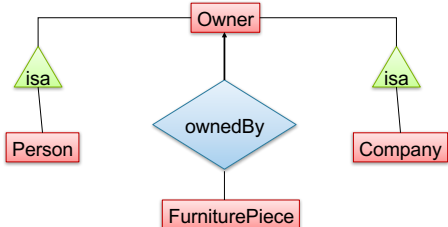


CSE 414 - Spring 2017

32

Modeling Union Types with Subclasses

Solution 2: better, more laborious

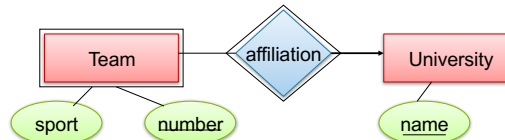


CSE 414 - Spring 2017

33

Weak Entity Sets

Entity sets are weak when their key comes from other classes to which they are related.

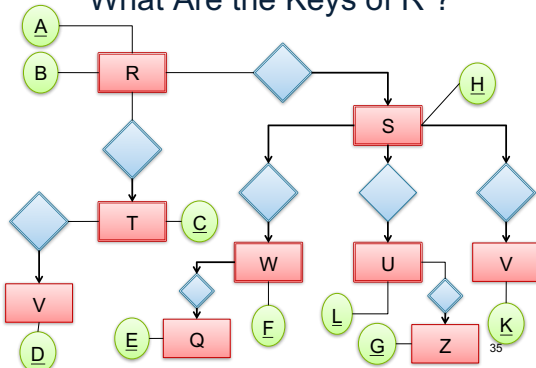


Team(sport, number, universityName)
University(name)

CSE 414 - Spring 2017

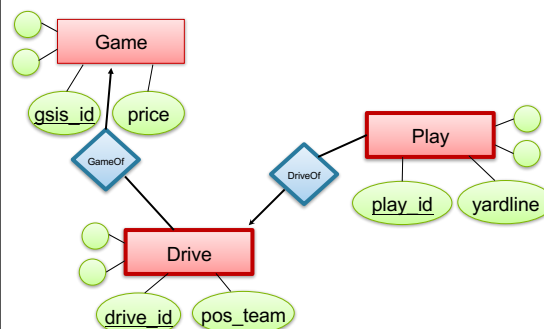
34

What Are the Keys of R ?



35

Ex: NFL Game DB



36

Integrity Constraints Motivation

An integrity constraint is a condition specified in a database schema that restricts the data that can be stored in an instance of the database.

Most important issue in practice

- ICs help prevent entry of incorrect information
- How? DBMS enforces integrity constraints
 - Allows only legal database instances (i.e., those that satisfy all constraints) to exist
 - Ensures that all necessary checks are always performed and avoids duplicating the verification logic in each application

CSE 414 - Spring 2017

37

Constraints in E/R Diagrams

Finding constraints is part of the modeling process. Commonly used constraints:

Keys: social security number uniquely identifies a person.

Single-value constraints: can have only one genetic father

Referential integrity constraints: if you work for a company, it must exist in the database.

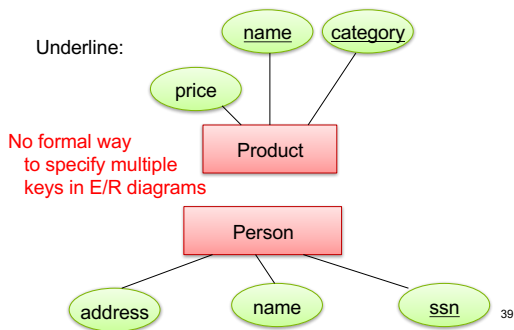
Other constraints: peoples' ages are between 0 and 150. some values should not be NULL

CSE 414 - Spring 2017

38

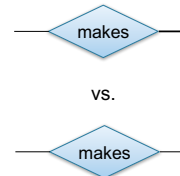
Keys in E/R Diagrams

Underline:



39

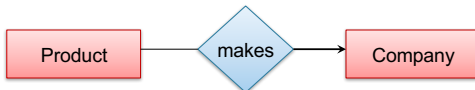
Single Value Constraints



CSE 414 - Spring 2017

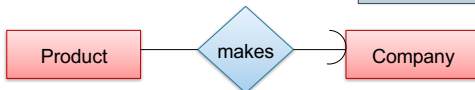
40

Referential Integrity Constraints



Each product made by at most one company.
Some products made by no company

Which one is FK?

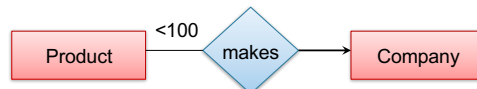


Each product made by exactly one company.

CSE 414 - Spring 2017

41

Other Constraints



Q: What does this mean ?

A: A Company entity cannot be connected by relationship to more than 99 Product entities

CSE 414 - Spring 2017

42

Constraints in SQL

Constraints in SQL:

- Keys, foreign keys
- Attribute-level constraints
- Tuple-level constraints
- Global constraints: assertions

simplest

Most complex

- The more complex the constraint, the harder it is to check and to enforce...
 - (Still, performance is secondary to correctness.)

CSE 414 - Spring 2017

43

Key Constraints

Product(name, category)

```
CREATE TABLE Product (
  name CHAR(30) PRIMARY KEY,
  category VARCHAR(20))
```

OR:

```
CREATE TABLE Product (
  name CHAR(30),
  category VARCHAR(20),
  PRIMARY KEY (name))
```

CSE 414 - Spring 2017

44

Keys with Multiple Attributes

Product(name, category, price)

```
CREATE TABLE Product (
  name CHAR(30),
  category VARCHAR(20),
  price INT,
  PRIMARY KEY (name, category))
```

Name	Category	Price
Gizmo	Gadget	10
Camera	Photo	20
Gizmo	Photo	30
Gizmo	Gadget	40

CSE 414 - Spring 2017

45

Other Keys

```
CREATE TABLE Product (
  productID CHAR(10),
  name CHAR(30),
  category VARCHAR(20),
  price INT,
  PRIMARY KEY (productID),
  UNIQUE (name, category))
```

There is at most one **PRIMARY KEY**;
there can be many **UNIQUE**

CSE 414 - Spring 2017

46

Foreign Key Constraints

```
CREATE TABLE Purchase (
  prodName CHAR(30)
  REFERENCES Product(name),
  date DATETIME)
```

Referential integrity constraints

prodName is a **foreign key** to Product(name)

name must be a **key** in Product
(i.e., PK or UNIQUE)

May write just Product if name is PK

CSE 414 - Spring 2017

47

Foreign Key Constraints

- Example with multi-attribute primary key

```
CREATE TABLE Purchase (
  prodName CHAR(30),
  category VARCHAR(20),
  date DATETIME,
  FOREIGN KEY (prodName, category)
  REFERENCES Product(name, category))
```

- (name, category) must be a **KEY** in Product

CSE 414 - Spring 2017

48

What happens when data changes?

Types of updates:

- In Purchase: insert/update
- In Product: delete/update

Product		Purchase	
Name	Category	ProdName	Store
Gizmo	gadget	Gizmo	Wiz
Camera	Photo	Camera	Ritz
OneClick	Photo	Camera	Wiz

CSE 414 - Spring 2017

49

What happens when data changes?

SQL has three options for maintaining referential integrity on changes:

- **NO ACTION** reject bad modifications (default)
- **CASCADE** after delete/update do delete/update
- **SET NULL** set foreign-key field to NULL
- **SET DEFAULT** set FK field to default value
 - need to be declared with column, e.g.,
CREATE TABLE Product (pid INT DEFAULT 42)

CSE 414 - Spring 2017

50

Maintaining Referential Integrity

```
CREATE TABLE Purchase (
  prodName CHAR(30),
  category VARCHAR(20),
  date DATETIME,
  FOREIGN KEY (prodName, category)
  REFERENCES Product(name, category)
  ON UPDATE CASCADE
  ON DELETE SET NULL )
```

Product		Purchase	
Name	Category	ProdName	Category
Gizmo	gadget	Gizmo	gadget
Camera	Photo	Snap	Camera
OneClick	Photo	EasyShoot	Camera

CSE 414 - Spring 2017

52

Constraints on Attributes and Tuples

- Constraints on attributes:
 - NOT NULL** -- obvious meaning...
 - CHECK** condition -- any condition !
- Constraints on tuples
 - CHECK** condition

CSE 414 - Spring 2017

52

Constraints on Attributes and Tuples

```
CREATE TABLE Product (
  productID CHAR(10),
  name CHAR(30),
  category VARCHAR(20),
  price INT CHECK (price > 0),
  PRIMARY KEY (productID))
```

CSE 414 - Spring 2017

53

Constraints on Attributes and Tuples

```
CREATE TABLE Product (
  productID CHAR(10),
  name CHAR(30),
  category VARCHAR(20)
  CHECK (category in ('toy', 'gadget', 'apparel')),
  price INT CHECK (price > 0),
  PRIMARY KEY (productID))
```

CSE 414 - Spring 2017

54

Constraints on Attributes and Tuples

```
CREATE TABLE Product (  
  productID CHAR(10),  
  name CHAR(30) NOT NULL,  
  category VARCHAR(20)  
  CHECK (category in ('toy', 'gadget', 'apparel')),  
  price INT CHECK (price > 0),  
  PRIMARY KEY (productID))
```

CSE 414 - Spring 2017

55

Constraints on Attributes and Tuples

```
CREATE TABLE R (  
  A int NOT NULL,  
  B int CHECK (B > 50 and B < 100),  
  C varchar(20),  
  D int,  
  CHECK (C >= 'd' or D > 0))
```

CSE 414 - Spring 2017

56

Constraints on Attributes and Tuples

What does this constraint do?

```
CREATE TABLE Purchase (  
  prodName CHAR(30)  
  CHECK (prodName IN  
  (SELECT Product.name  
  FROM Product)),  
  date DATETIME NOT NULL)
```

What is the difference from Foreign Key?

CSE 414 - Spring 2017

57

General Assertions

```
CREATE ASSERTION myAssert CHECK  
(NOT EXISTS(  
  SELECT Product.name  
  FROM Product, Purchase  
  WHERE Product.name = Purchase.prodName  
  GROUP BY Product.name  
  HAVING count(*) > 200))
```

But most DBMSs do not implement assertions
Because it is hard to support them efficiently
Instead, they provide triggers

CSE 414 - Spring 2017

58