

# Empty Space Mapping

Jessica Chayavichitsilp(CSE), Mussie Nigussie(CSE)

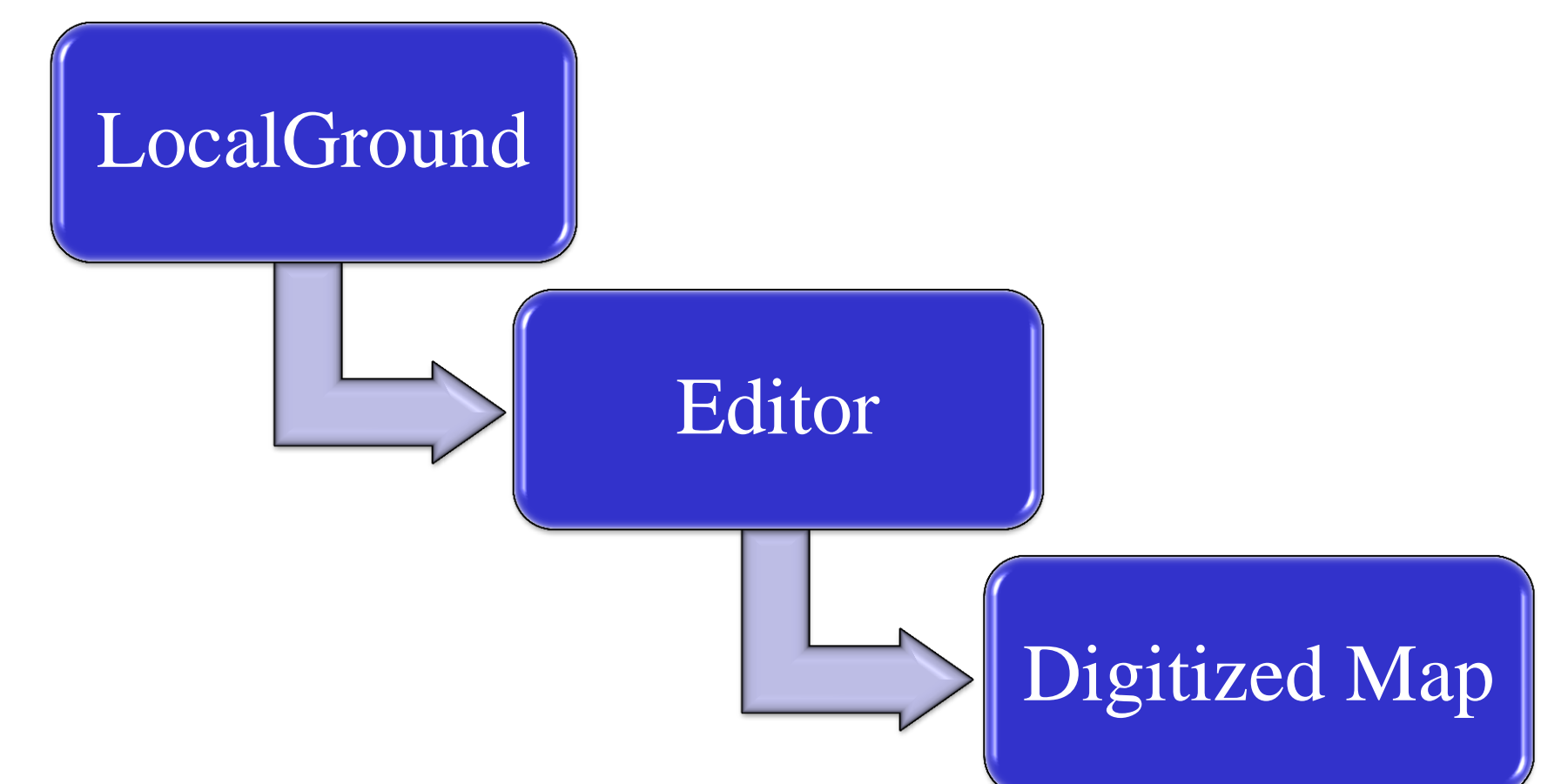
## Problem

- During disaster, up-to-date map is critical and currently there is no simple tool for volunteers/people who are affected by disaster to update the map.



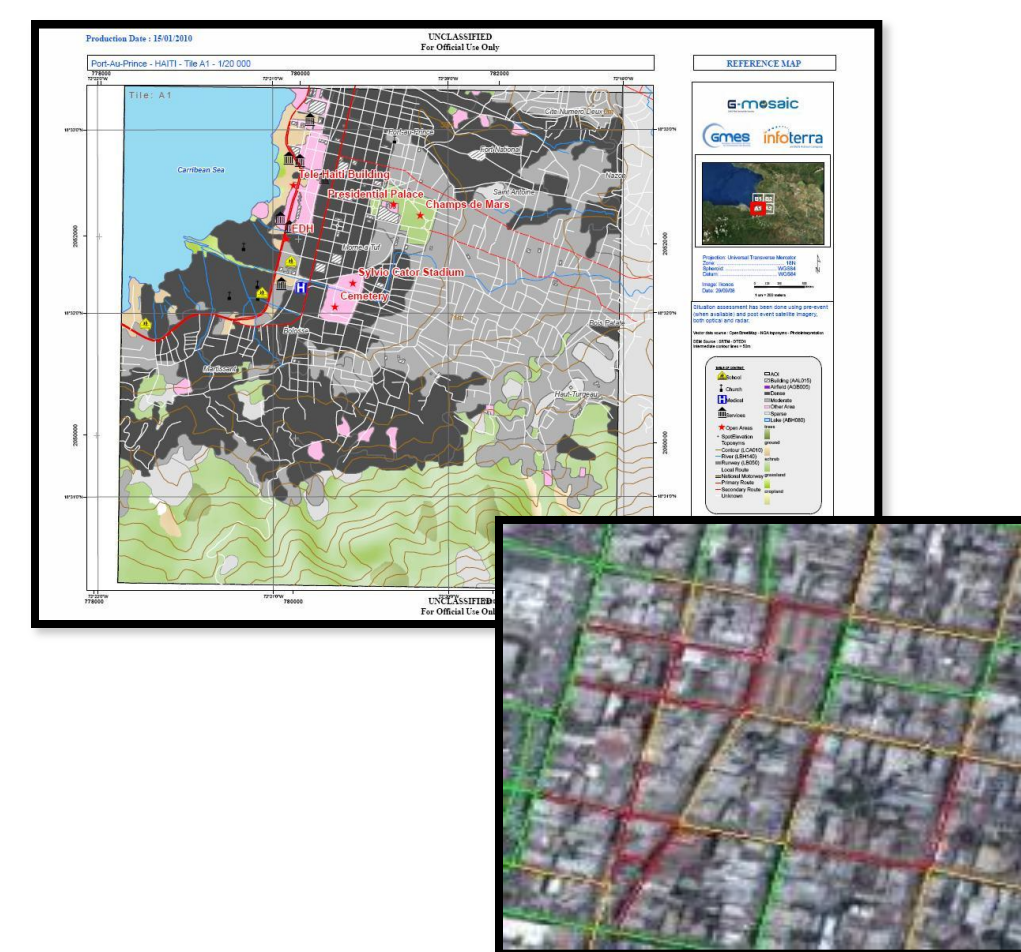
## Solution Idea

- Use Local Ground as a central collection site to upload map
- Easy collection as paper and pencil is all volunteers need to map.
- Integrate OSM to Local Ground to allow on-site volunteers to just upload what they mapped and let the remote-site volunteers to digitize it. And share as quickly as possible.



## Related Work

- Local Ground has an easy way to map
- Walking Paper has similar but shares only via OSM
- OSM requires GPS or Mobile apps to collect data
- GoogleMaps takes long to update for disaster



## Field Work

- Tapan Parikh, Sarah Van Wart



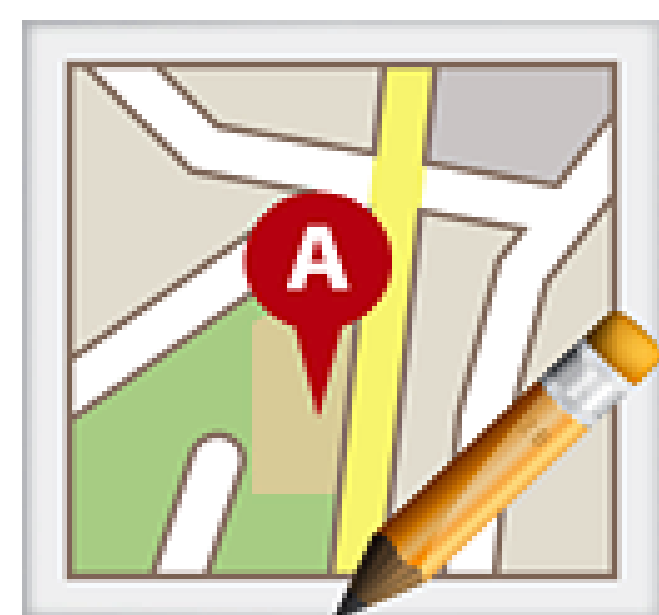
## Architecture and Prototype

### ON-SITE VOLUNTEERS

#### 1 PRINT A PAPER MAP OR USE MOBILE APP



#### 2 EDIT MAP BY HAND



3 Take a picture of hand-annotated map and upload it to LG



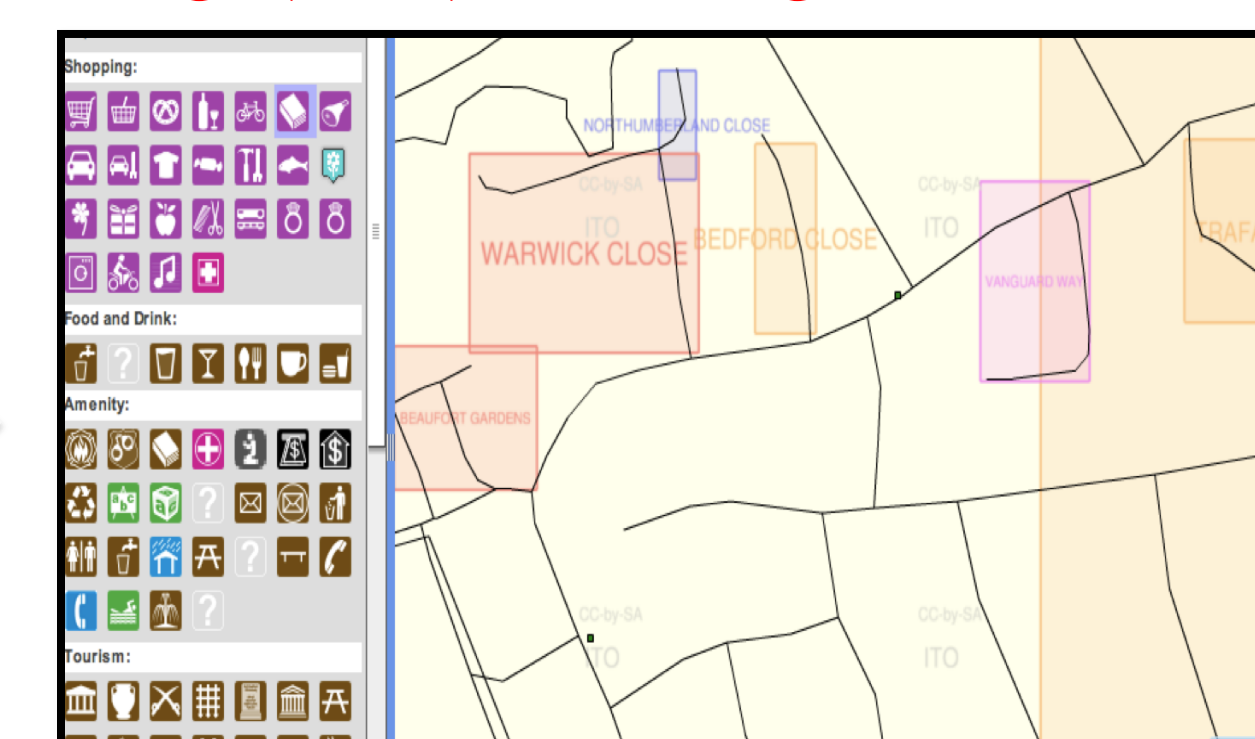
??

#### 4 SELECT THE UPLOADED MAP



### OFF-SITE VOLUNTEERS

#### 5 EDIT THE MAP USING ONLINE EDITOR



#### 6 PUBLICIZE YOUR MAP OR SHARE WITH FRIENDS



## Spring Quarter Timeline

