

# Computer Vision

CSE/EE 576

## Content-Based Image Retrieval and the EM Algorithm

Linda Shapiro

Professor of Computer Science & Engineering  
Professor of Electrical & Computer Engineering

# Content-Based Image Retrieval

- Queries
- Commercial Systems
- Retrieval Features
- Indexing in the FIDS System
- Lead-in to Object Recognition

# Content-based Image Retrieval (CBIR)

Searching a large database for images that *match* a query:

- What kinds of databases?
- What kinds of queries?
- What constitutes a match?
- How do we make such searches efficient?

# Applications

- Art Collections  
e.g. Fine Arts Museum of San Francisco
- Medical Image Databases  
CT, MRI, Ultrasound, The Visible Human
- Scientific Databases  
e.g. Earth Sciences
- General Image Collections for Licensing  
Corbis, Getty Images
- The World Wide Web  
Google, Microsoft, etc

# What is a query?

- an **image** you already have
- a rough **sketch** you draw
- a **symbolic description** of what you want  
e.g. an image of a man and a woman on a beach

# Some Systems You Can Try

- Corbis ~~sells~~ sold high-quality images for use in advertising, marketing, illustrating, etc. Corbis was sold to a Chinese company, but
- Getty images now provides the image sales.
- <http://www.gettyimages.com/search/2/image?excludenudity=true&sort=best>

# Google Image

- Google Images

<http://www.google.com/imghp>

Try the camera icon.

# Microsoft Bing

- <http://www.bing.com/>



# Problem with Text-Based Search

- Retrieval for pigs for the color chapter of my book
- Small company (was called Ditto)
- Allows you to search for pictures from web pages



# Features

- Color (histograms, gridded layout, wavelets)
- Texture (Laws, Gabor filters, local binary pattern)
- Shape (first segment the image, then use statistical or structural shape similarity measures)
- Objects and their Relationships

This is the most powerful, but you have to be able to recognize the objects!

# Color Histograms

transp85.ps - GSview

File Edit Options View Orientation Media Help

File: transp85.ps 72,629pt Page: "5" 1 of 1

Images 1-8 out of 50




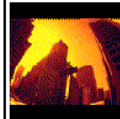


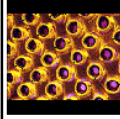

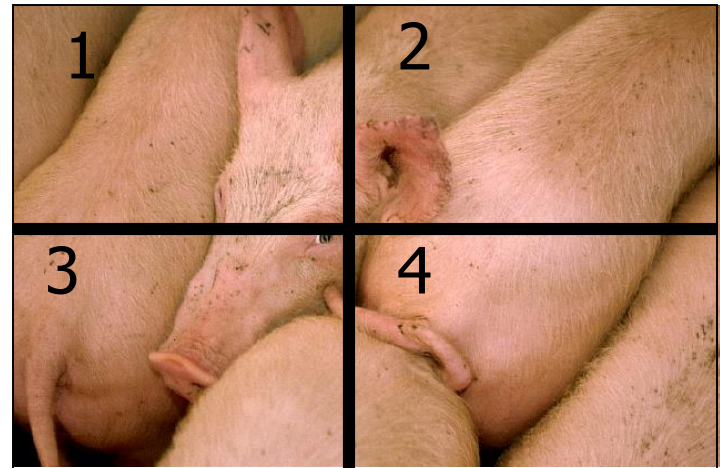
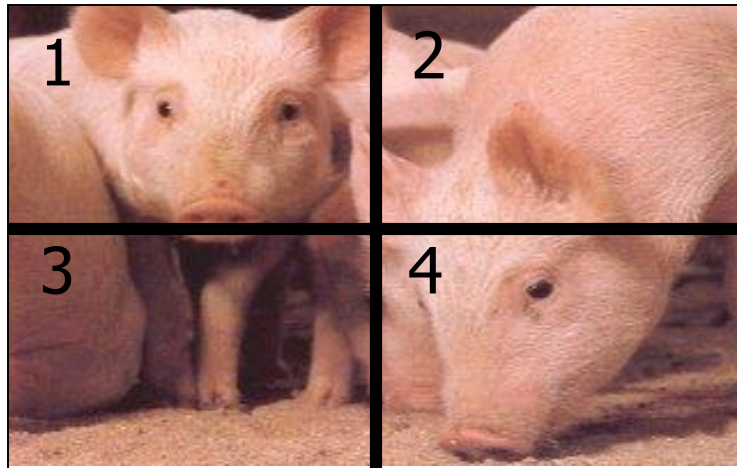
			
view full size	view full size	view full size	view full size
			
view full size	view full size	view full size	view full size

Figure 8.4: Results of a QBIC search based on color percentages; the query specified 40% red, 30% yellow, and 10% black (images courtesy of Egames).

Start FastLane:Proposal Review... Microsoft PowerPoint - [sh... transp85.ps - GSview 3:43 PM

# Gridded Color

Gridded color distance is the sum of the color distances in each of the corresponding grid squares.



What color distance would you use for a pair of grid squares?

# Color Layout (IBM's Gridded Color)

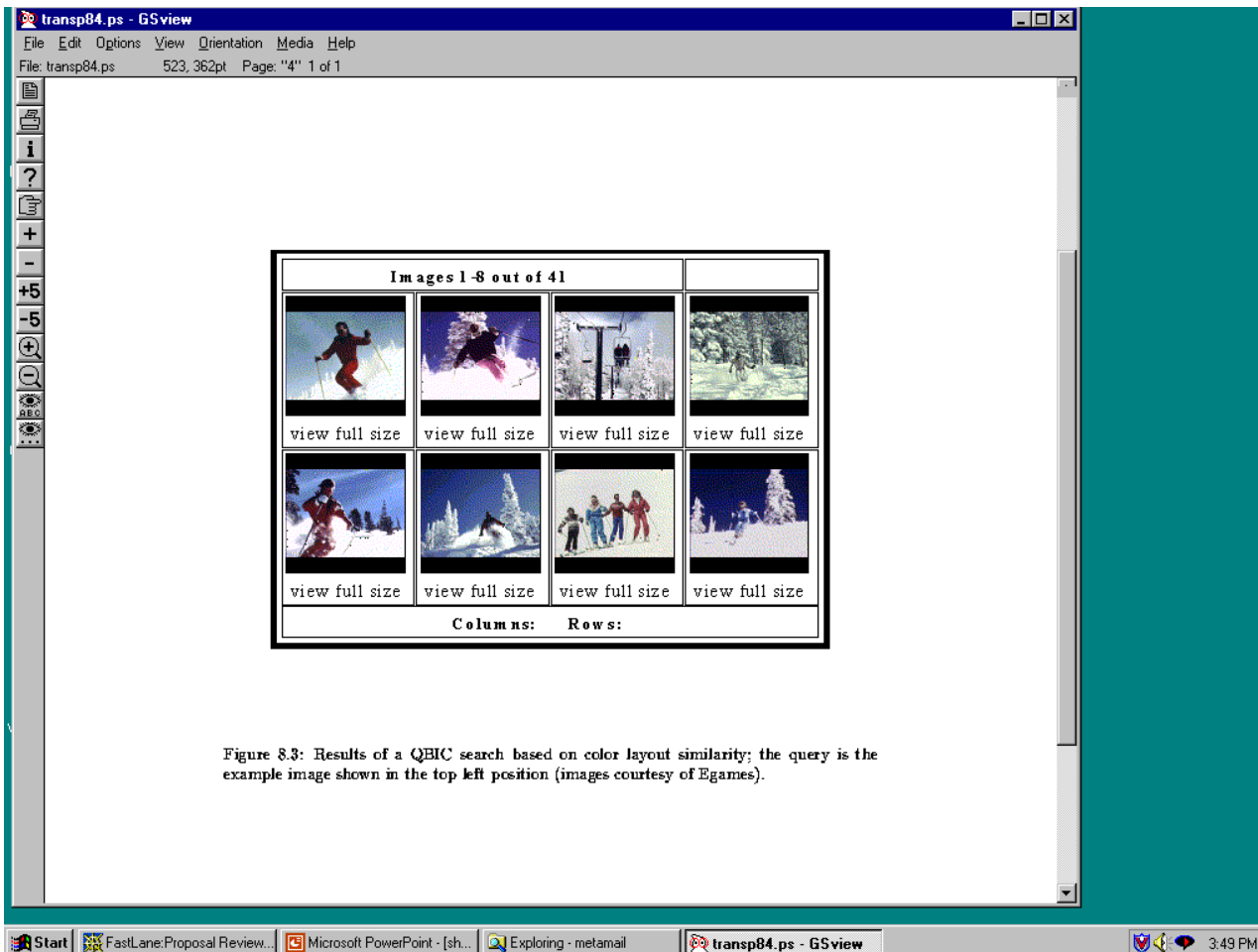
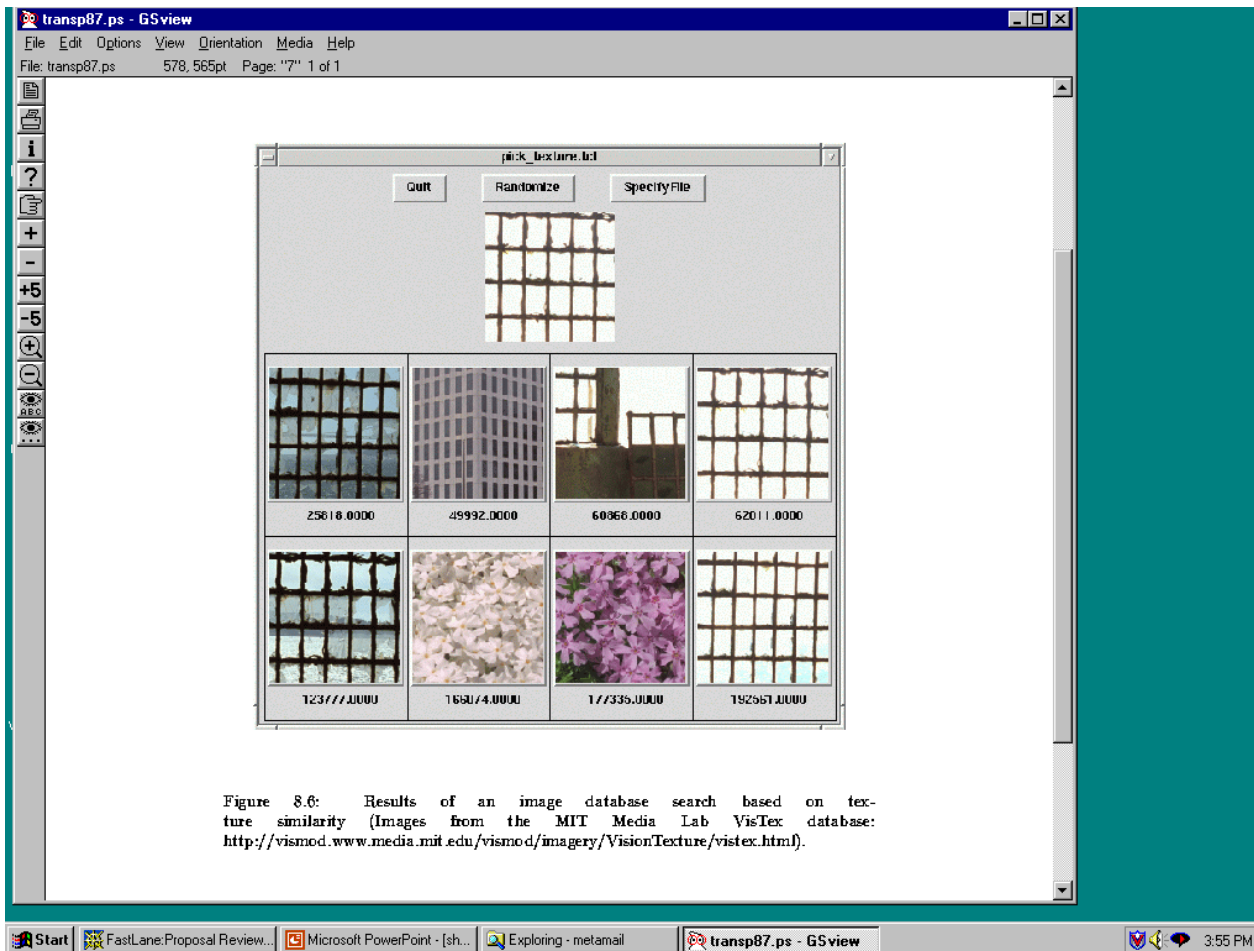


Figure 8.3: Results of a QBIC search based on color layout similarity; the query is the example image shown in the top left position (images courtesy of Egames).

# Texture Distances

- Pick and Click (user clicks on a pixel and system retrieves images that have in them a region with similar texture to the region surrounding it).
- Gridded (just like gridded color, but use texture).
- Histogram-based (e.g. compare the LBP histograms).

# Laws Texture

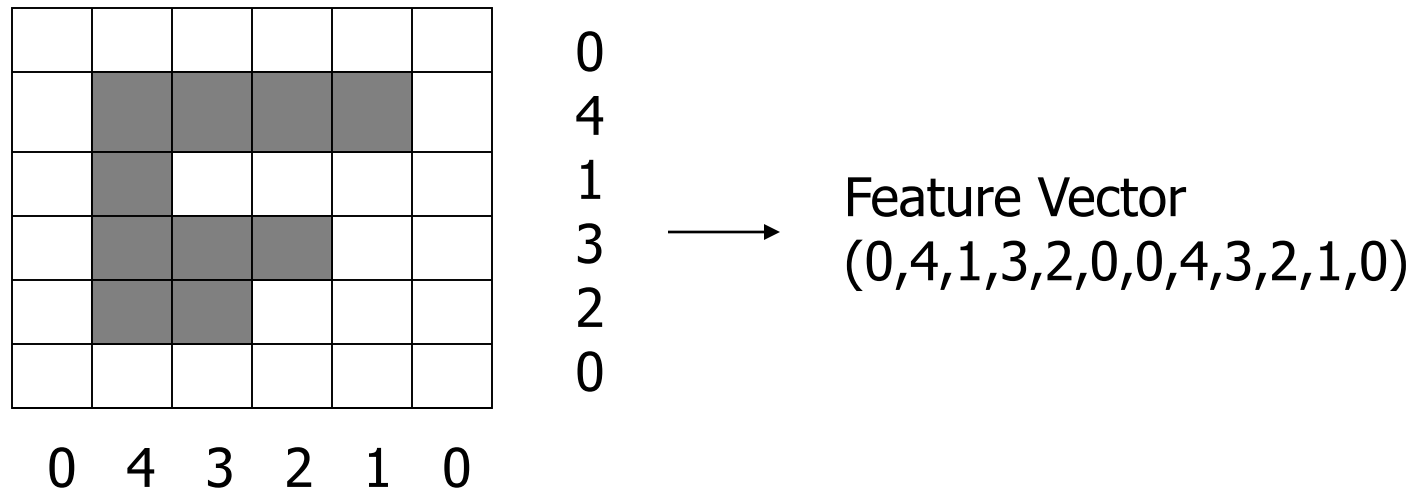


# Shape Distances

- Shape goes one step further than color and texture.
- It requires identification of regions to compare.
- There have been many shape similarity measures suggested for pattern recognition that can be used to construct shape distance measures.



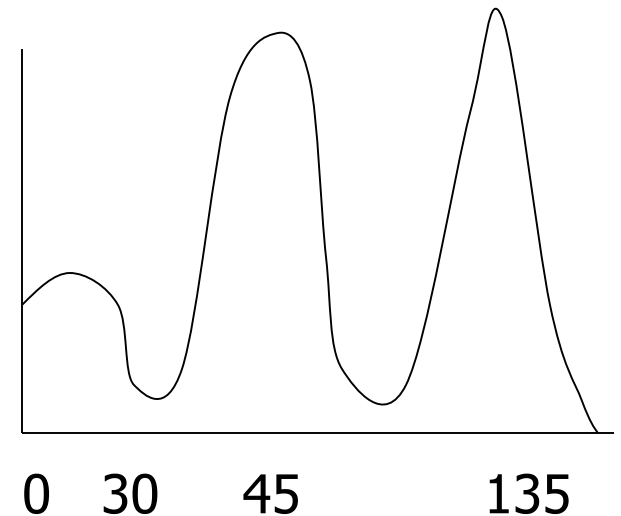
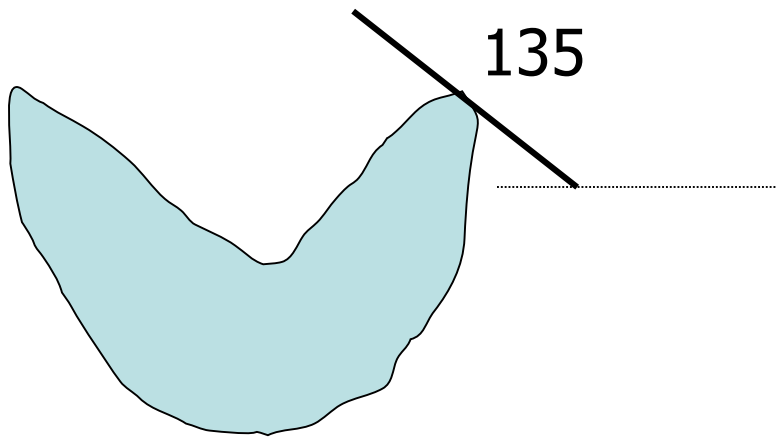
# Global Shape Properties: Projection Matching



In projection matching, the horizontal and vertical projections form a histogram.

What are the weaknesses of this method? strengths?

# Global Shape Properties: Tangent-Angle Histograms



Is this feature invariant to starting point?  
Is it invariant to size, translation, rotation?

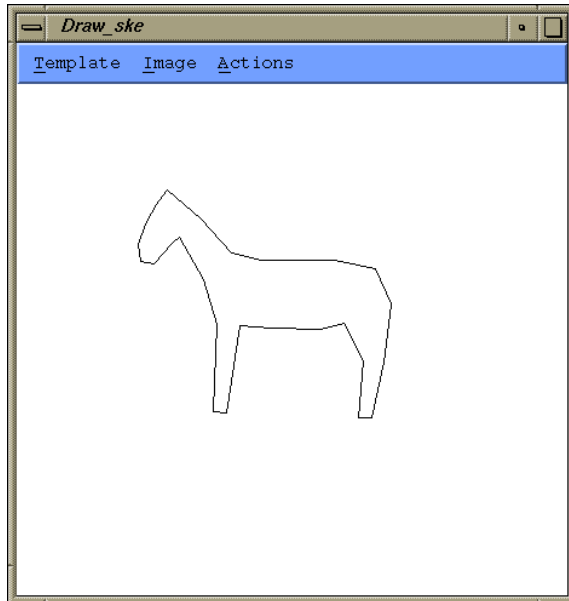
# Boundary Matching

- Fourier Descriptors
- Sides and Angles
- Elastic Matching

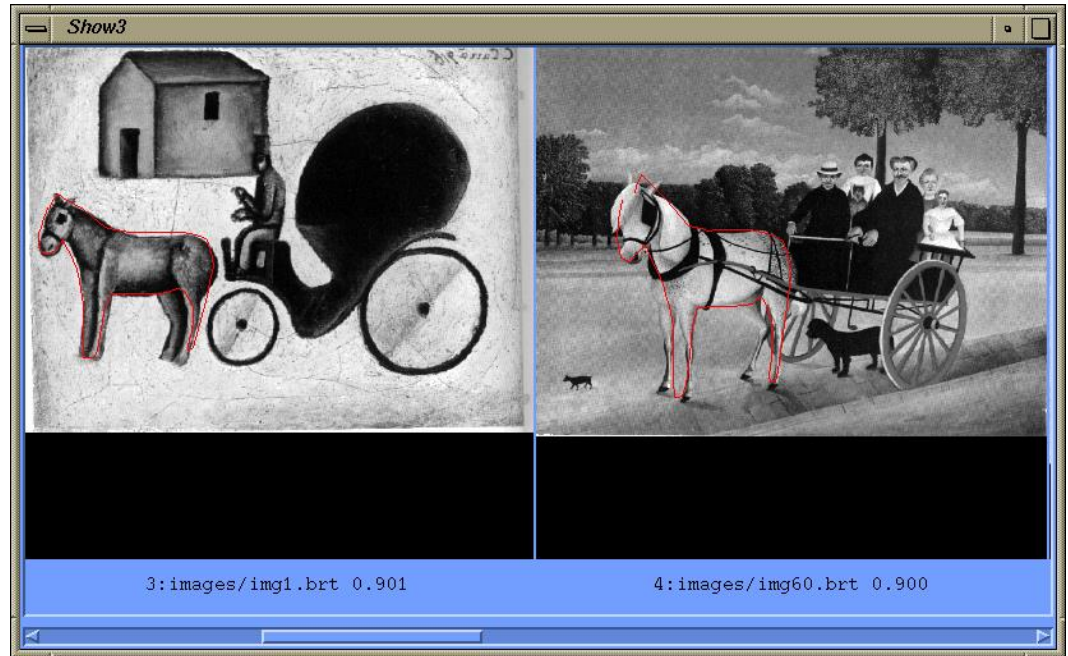
The distance between query shape and image shape has two components:

1. energy required to deform the query shape into one that best matches the image shape
2. a measure of how well the deformed query matches the image

# Del Bimbo Elastic Shape Matching



query



retrieved images

# Regions and Relationships

- Segment the image into **regions**
- Find their **properties** and **interrelationships**
- Construct a **graph** representation with nodes for regions and edges for spatial relationships
- Use **graph matching** to compare images

Like  
what?

# Blobworld (Carson et al, 1999)

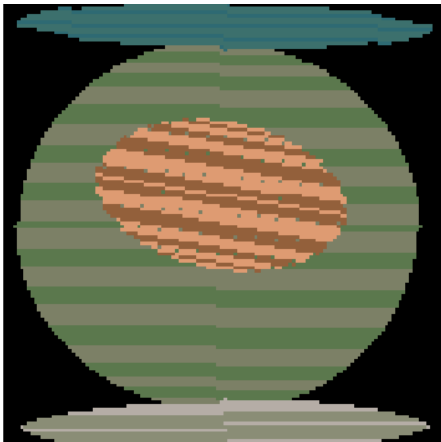


- Segmented the query (and all database images) using EM on color+texture
- Allowed users to select the most important region and what characteristics of it (color, texture, location)
- Asked users if the background was also important

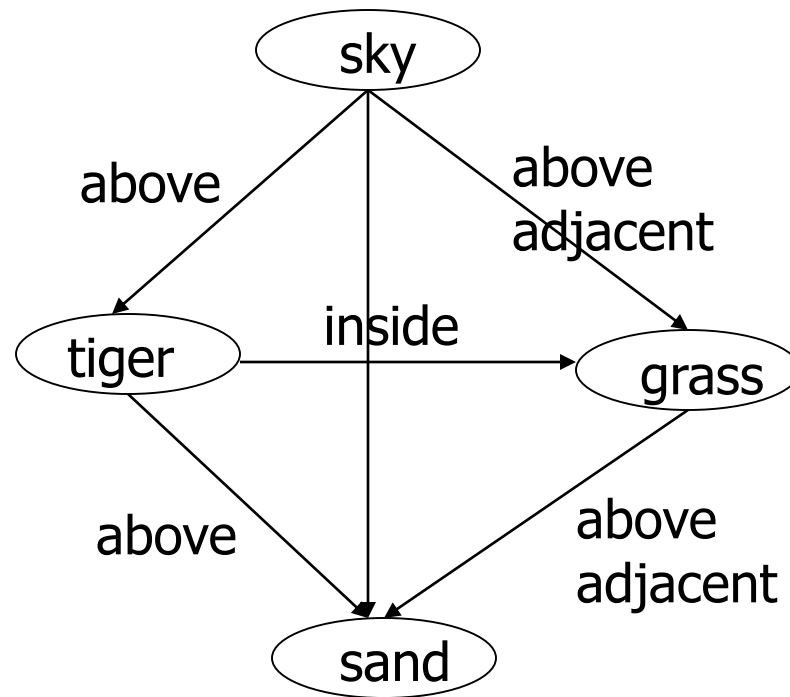
# Tiger Image as a Graph (motivated by Blobworld)



image



abstract regions



# Andy Berman's FIDS System

multiple distance measures

Boolean and linear combinations

efficient indexing using images as keys

**Fids demo**

Found 51 matches. Displaying 1 - 6

distance measures    loose ... strict

<input type="checkbox"/> ColorHistL14x4x4		5	<input checked="" type="radio"/> And
<input checked="" type="checkbox"/> ColorHist8x8x8		5	<input type="radio"/> Or
<input type="checkbox"/> SobelEdgeHist		5	<input type="radio"/> Sum
<input checked="" type="checkbox"/> LBPHist		5	
<input type="checkbox"/> fleshiness		5	
<input type="checkbox"/> Wavelets		5	

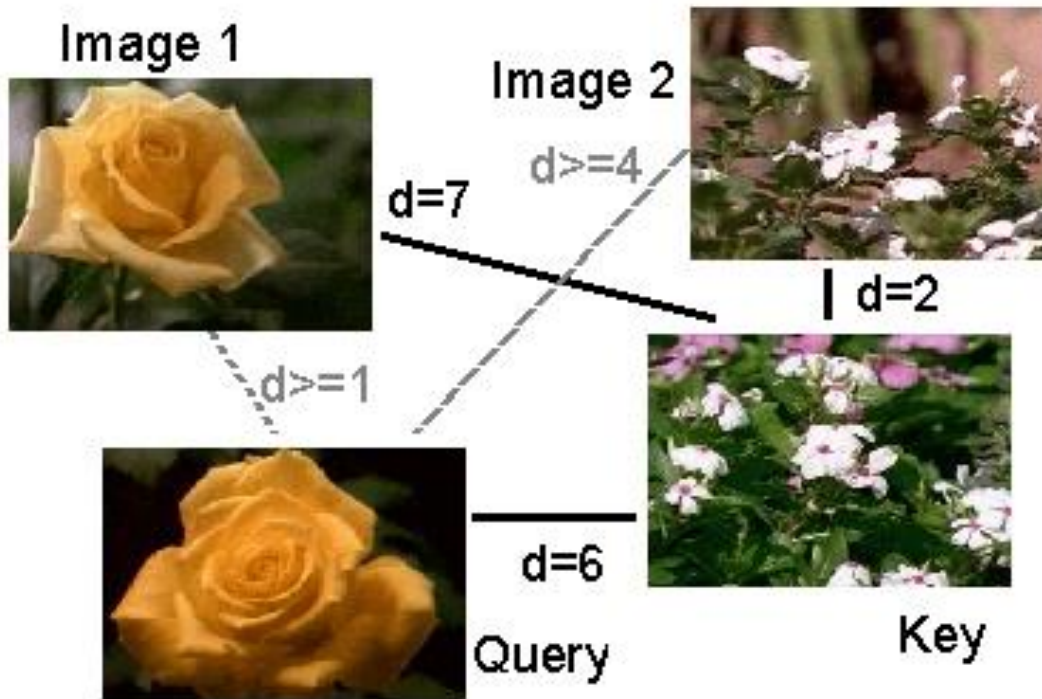
A double click on an image means:

- Set query / Go
- Zoom in



## Andy Berman's FIDS System:

Use of **key images** and the **triangle inequality** for efficient retrieval.  $d(I,Q) \geq |d(I,K) - d(Q,K)|$



## Andy Berman's FIDS System:

### Bare-Bones Triangle Inequality Algorithm

#### Offline

1. Choose a small set of key images
2. Store distances from database images to keys

#### Online (given query $Q$ )

1. Compute the distance from  $Q$  to each key
2. Obtain lower bounds on distances to database images
3. Threshold or return all images in order of lower bounds

## Andy Berman's FIDS System:

### Flexible Image Database System: Example

---



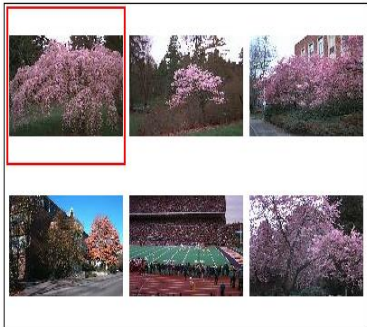
An example from our system using a simple color measure.

# images in system: 37,748

threshold: 100 out of 1000

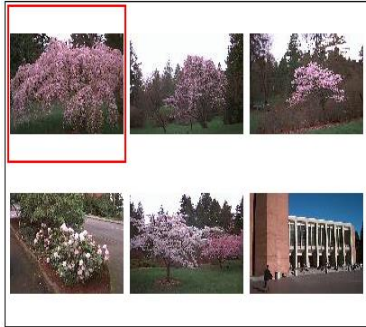
# images eliminated: 37,729

# Different Features



◀ Random Go Zoomin ▶ Found 17 matches. Displaying 1 - 6

- distance measures loose ... strict
- ColorHistL14x4x4 3
  - ColorHist8x8 5
  - SobelEdgeHist 5
  - LBPHist 5
  - fleshiness 5
  - Wavelets 5
- And  
 Or  
 Sum



◀ Random Go Zoomin ▶ Found 18 matches. Displaying 1 - 6

- distance measures loose ... strict
- ColorHistL14x4x4 5
  - ColorHist8x8 5
  - SobelEdgeHist 5
  - LBPHist 5
  - fleshiness 5
  - Wavelets 5
- And  
 Or  
 Sum



◀ Random Go Zoomin ▶ Found 67 matches. Displaying 1 - 6

- distance measures loose ... strict
- ColorHistL14x4x4 5
  - ColorHist8x8 5
  - SobelEdgeHist 5
  - LBPHist 5
  - fleshiness 5
  - Wavelets 5
- And  
 Or  
 Sum



◀ Random Go Zoomin ▶ Found 191 matches. Displaying 1 - 6

- distance measures loose ... strict
- ColorHistL14x4x4 5
  - ColorHist8x8 5
  - SobelEdgeHist 5
  - LBPHist 5
  - fleshiness 5
  - Wavelets 5
- And  
 Or  
 Sum



◀ Random Go Zoomin ▶ Found 446 matches. Displaying 1 - 6

- distance measures loose ... strict
- ColorHistL14x4x4 5
  - ColorHist8x8 5
  - SobelEdgeHist 5
  - LBPHist 5
  - fleshiness 5
  - Wavelets 5
- And  
 Or  
 Sum



◀ Random Go Zoomin ▶ Found 41 matches. Displaying 1 - 6

- distance measures loose ... strict
- ColorHistL14x4x4 5
  - ColorHist8x8 5
  - SobelEdgeHist 5
  - LBPHist 5
  - fleshiness 5
  - Wavelets 5
- And  
 Or  
 Sum

# Combined Features



◀ Random Go ZoomIn ▶ Found 94 matches. Displaying 1 - 6

distance measures	loose ... strict	
<input checked="" type="checkbox"/> ColorHistL14x4x4	5	<input type="radio"/> And <input type="radio"/> Or <input checked="" type="radio"/> Sum
<input checked="" type="checkbox"/> ColorHist8x8x8	5	
<input checked="" type="checkbox"/> SobelEdgeHist	5	
<input checked="" type="checkbox"/> LBPHist	5	
<input type="checkbox"/> fleshiness	5	
<input checked="" type="checkbox"/> Wavelets	5	

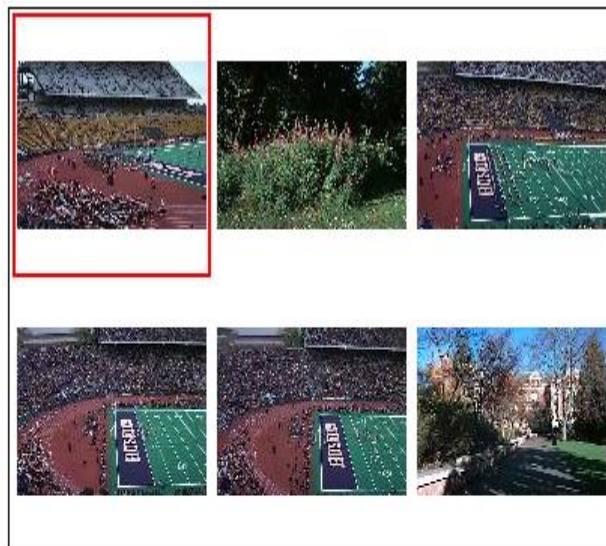


# Another example: different features



◀ Random Go ZoomIn ▶ Found 7 matches. Displaying 1 - 6

- | distance measures                                  | loose ... strict |   |
|--|------------------|---|
| <input type="checkbox"/> ColorHistL14x4x4          | 5                | <input checked="" type="radio"/> And<br><input type="radio"/> Or<br><input type="radio"/> Sum |
| <input checked="" type="checkbox"/> ColorHist8x8x8 | 5                |   |
| <input type="checkbox"/> SobelEdgeHist             | 5                |   |
| <input type="checkbox"/> LBPHist                   | 5                |   |
| <input type="checkbox"/> fleshiness                | 5                |   |
| <input type="checkbox"/> Wavelets                  | 5                |   |



◀ Random Go ZoomIn ▶ Found 91 matches. Displaying 1 - 6

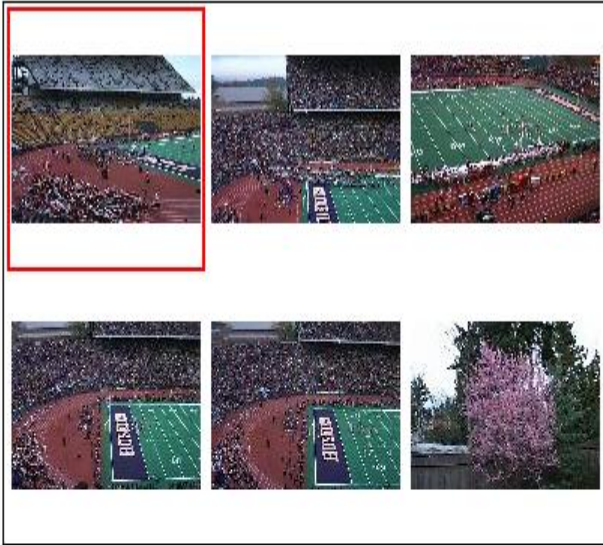
- | distance measures                                 | loose ... strict |   |
|---|------------------|---|
| <input type="checkbox"/> ColorHistL14x4x4         | 5                | <input checked="" type="radio"/> And<br><input type="radio"/> Or<br><input type="radio"/> Sum |
| <input type="checkbox"/> ColorHist8x8x8           | 5                |   |
| <input checked="" type="checkbox"/> SobelEdgeHist | 5                |   |
| <input type="checkbox"/> LBPHist                  | 5                |   |
| <input type="checkbox"/> fleshiness               | 5                |   |
| <input type="checkbox"/> Wavelets                 | 5                |   |



◀ Random Go ZoomIn ▶ Found 202 matches. Displaying 1 - 6

- | distance measures                           | loose ... strict |   |
|---|------------------|---|
| <input type="checkbox"/> ColorHistL14x4x4   | 5                | <input checked="" type="radio"/> And<br><input type="radio"/> Or<br><input type="radio"/> Sum |
| <input type="checkbox"/> ColorHist8x8x8     | 5                |   |
| <input type="checkbox"/> SobelEdgeHist      | 5                |   |
| <input checked="" type="checkbox"/> LBPHist | 5                |   |
| <input type="checkbox"/> fleshiness         | 5                |   |
| <input type="checkbox"/> Wavelets           | 5                |   |

# Combined Features



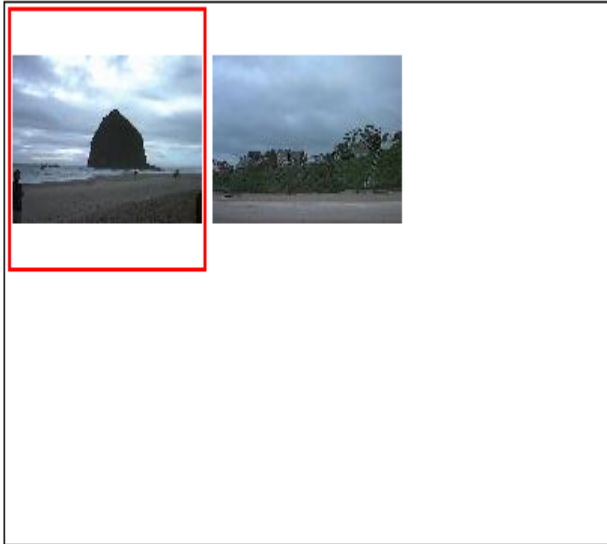
◀ Random Go ZoomIn ▶ Found 46 matches. Displaying 1 - 6

◀ Random Go ZoomIn ▶ Found 33 matches. Displaying 1 - 6

- distance measures    loose ... strict
- ColorHistL14x4x4    |-----| 5
  - ColorHist8x8x8    |-----| 5     And
  - SobelEdgeHist    |-----| 5     Or
  - LBPHist    |-----| 5     Sum
  - fleshiness    |-----| 5
  - Wavelets    |-----| 5

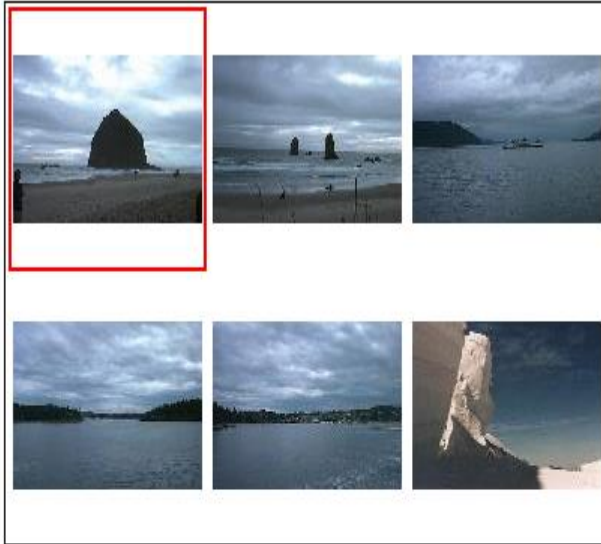
- distance measures    loose ... strict
- ColorHistL14x4x4    |-----| 5
  - ColorHist8x8x8    |-----| 5     And
  - SobelEdgeHist    |-----| 5     Or
  - LBPHist    |-----| 5     Sum
  - fleshiness    |-----| 5
  - Wavelets    |-----| 5

# Another example: different features



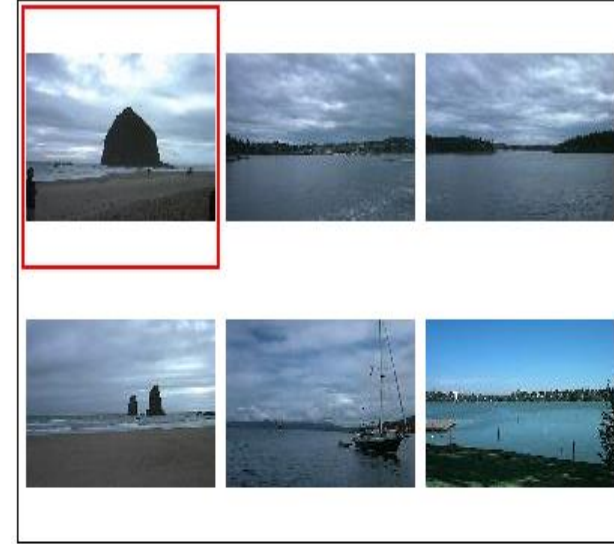
◀ Random Go ZoomIn ▶ Found 2 matches. Displaying 1 - 2

- distance measures    loose ... strict
- ColorHistL14x4x4    ██████████ 5
  - ColorHist8x8x8    ██████████ 5
  - SobelEdgeHist    ██████████ 5
  - LBPHist    ██████████ 5
  - fleshiness    ██████████ 5
  - Wavelets    ██████████ 5
- And  
 Or  
 Sum



◀ Random Go ZoomIn ▶ Found 125 matches. Displaying 1 - 6

- distance measures    loose ... strict
- ColorHistL14x4x4    ██████████ 5
  - ColorHist8x8x8    ██████████ 5
  - SobelEdgeHist    ██████████ 5
  - LBPHist    ██████████ 5
  - fleshiness    ██████████ 5
  - Wavelets    ██████████ 5
- And  
 Or  
 Sum

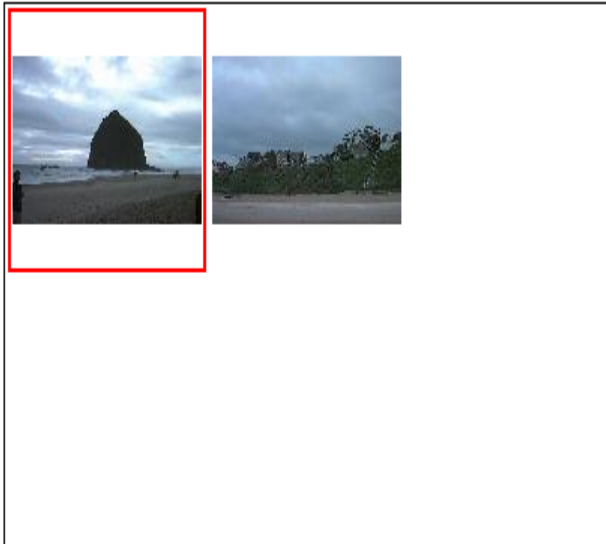


◀ Random Go ZoomIn ▶ Found 16 matches. Displaying 1 - 6

- distance measures    loose ... strict
- ColorHistL14x4x4    ██████████ 5
  - ColorHist8x8x8    ██████████ 5
  - SobelEdgeHist    ██████████ 5
  - LBPHist    ██████████ 5
  - fleshiness    ██████████ 5
  - Wavelets    ██████████ 5
- And  
 Or  
 Sum

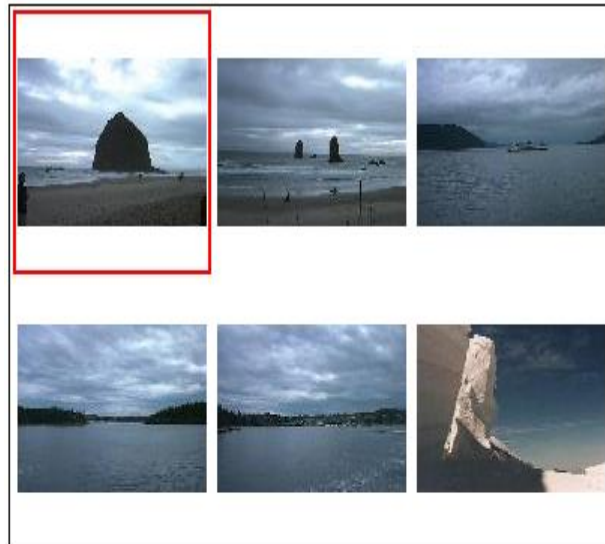


# Different ways for combination



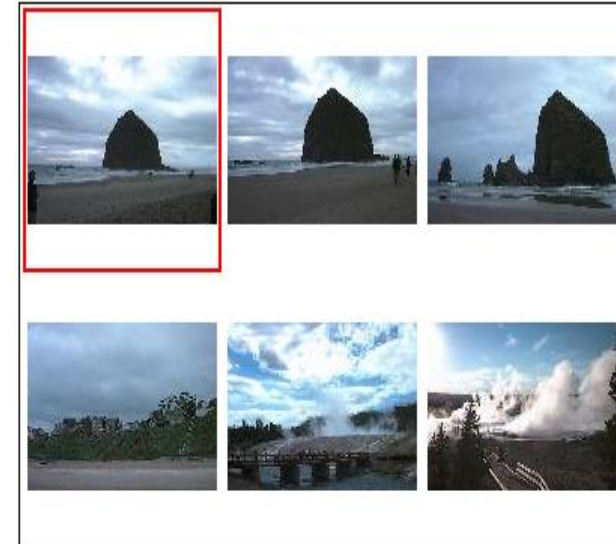
◀ Random Go ZoomIn ▶ Found 2 matches. Displaying 1 - 2

- distance measures    loose ... strict
- ColorHistL14x4x4    ██████████ 5
  - ColorHist8x8x8    ██████████ 5
  - SobelEdgeHist    ██████████ 5
  - LBPHist    ██████████ 5
  - fleshiness    ██████████ 5
  - Wavelets    ██████████ 5
- And  
 Or  
 Sum



◀ Random Go ZoomIn ▶ Found 157 matches. Displaying 1 - 6

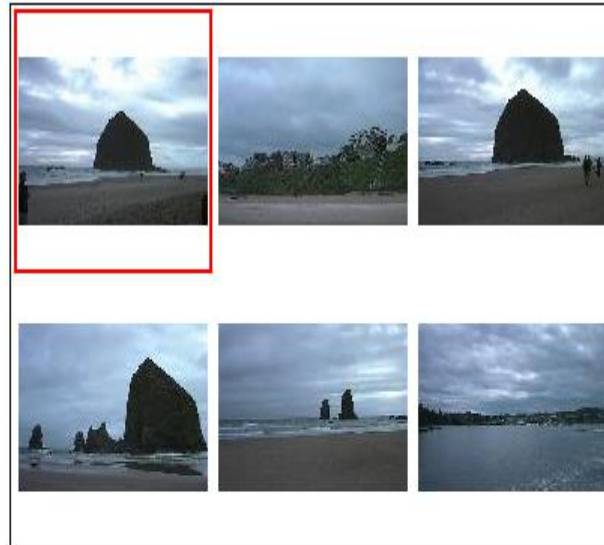
- distance measures    loose ... strict
- ColorHistL14x4x4    ██████████ 5
  - ColorHist8x8x8    ██████████ 5
  - SobelEdgeHist    ██████████ 5
  - LBPHist    ██████████ 5
  - fleshiness    ██████████ 5
  - Wavelets    ██████████ 5
- And  
 Or  
 Sum



◀ Random Go ZoomIn ▶ Found 50 matches. Displaying 1 - 6

- distance measures    loose ... strict
- ColorHistL14x4x4    ██████████ 5
  - ColorHist8x8x8    ██████████ 5
  - SobelEdgeHist    ██████████ 5
  - LBPHist    ██████████ 5
  - fleshiness    ██████████ 5
  - Wavelets    ██████████ 5
- And  
 Or  
 Sum

# Different weights on features



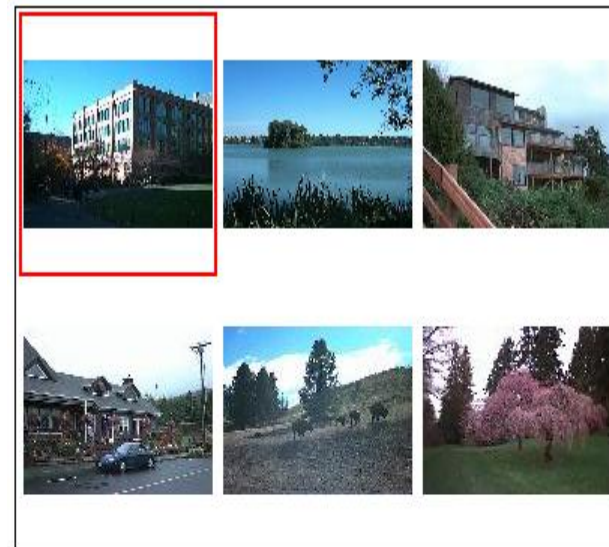
◀ Random Go ZoomIn ▶ Found 89 matches. Displaying 1 - 6

- distance measures    loose ... strict
- ColorHistL14x4x4    |-----| 1     And
  - ColorHist8x8x8    |-----| 2     Or
  - SobelEdgeHist    |-----| 8     Sum
  - LBPHist    |-----| 5
  - fleshiness    |-----| 5
  - Wavelets    |-----| 5



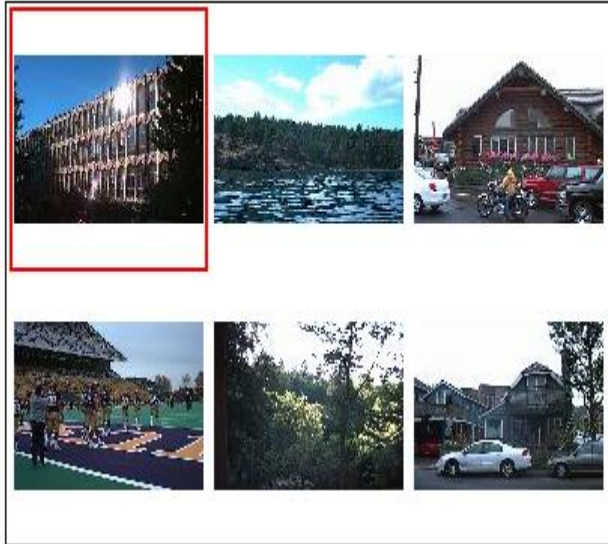
◀ Random Go ZoomIn ▶ Found 170 matches. Displaying 1 - 6

- | distance measures                                 | loose ... strict |   |
|---|------------------|---|
| <input type="checkbox"/> ColorHistL14x4x4         | 5                | <input checked="" type="radio"/> And<br><input type="radio"/> Or<br><input type="radio"/> Sum |
| <input type="checkbox"/> ColorHist8x8x8           | 5                |   |
| <input checked="" type="checkbox"/> SobelEdgeHist | 5                |   |
| <input type="checkbox"/> LBPHist                  | 5                |   |
| <input type="checkbox"/> fleshiness               | 5                |   |
| <input type="checkbox"/> Wavelets                 | 5                |   |



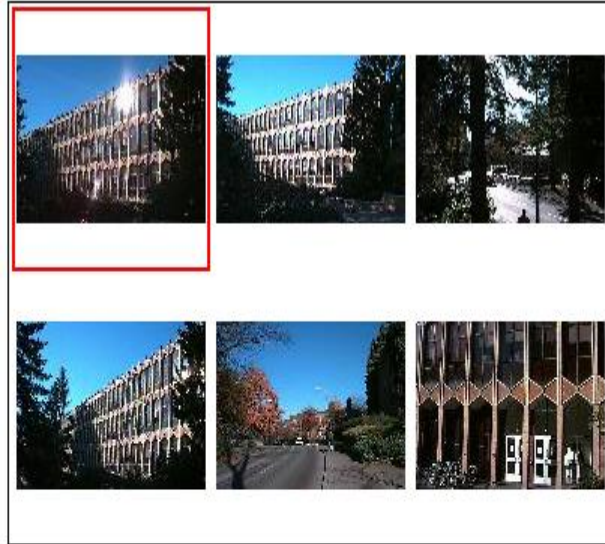
◀ Random Go ZoomIn ▶ Found 170 matches. Displaying 1 - 6

- | distance measures                                 | loose ... strict |   |
|---|------------------|---|
| <input type="checkbox"/> ColorHistL14x4x4         | 5                | <input checked="" type="radio"/> And<br><input type="radio"/> Or<br><input type="radio"/> Sum |
| <input type="checkbox"/> ColorHist8x8x8           | 5                |   |
| <input checked="" type="checkbox"/> SobelEdgeHist | 5                |   |
| <input type="checkbox"/> LBPHist                  | 5                |   |
| <input type="checkbox"/> fleshiness               | 5                |   |
| <input type="checkbox"/> Wavelets                 | 5                |   |



◀ Random Go ZoomIn ▶ Found 129 matches. Displaying 1 - 6

- | distance measures                                 | loose ... strict |   |
|---|------------------|---|
| <input type="checkbox"/> ColorHistL14x4x4         | 5                | <input checked="" type="radio"/> And<br><input type="radio"/> Or<br><input type="radio"/> Sum |
| <input type="checkbox"/> ColorHist8x8x8           | 5                |   |
| <input checked="" type="checkbox"/> SobelEdgeHist | 5                |   |
| <input type="checkbox"/> LBPHist                  | 5                |   |
| <input type="checkbox"/> fleshiness               | 5                |   |
| <input type="checkbox"/> Wavelets                 | 5                |   |



◀ Random Go ZoomIn ▶ Found 15 matches. Displaying 1 - 6

- | distance measures                                  | loose ... strict |   |
|--|------------------|---|
| <input type="checkbox"/> ColorHistL14x4x4          | 5                | <input checked="" type="radio"/> And<br><input type="radio"/> Or<br><input type="radio"/> Sum |
| <input checked="" type="checkbox"/> ColorHist8x8x8 | 5                |   |
| <input type="checkbox"/> SobelEdgeHist             | 5                |   |
| <input type="checkbox"/> LBPHist                   | 5                |   |
| <input type="checkbox"/> fleshiness                | 5                |   |
| <input type="checkbox"/> Wavelets                  | 5                |   |



# Weakness of Low-level Features

- Can't capture the high-level concepts



# Yi Li's Overall Approach

- Develop object recognizers for common objects
- Use these recognizers to design a new set of both low- and mid-level features
- Design a learning system that can use these features to recognize classes of objects

# Building Features: Consistent Line Clusters (CLC)

A **Consistent Line Cluster** is a set of lines that are homogeneous in terms of some line features.

- **Color-CLC**: The lines have the same color feature.
- **Orientation-CLC**: The lines are parallel to each other or converge to a common vanishing point.
- **Spatially-CLC**: The lines are in close proximity to each other.

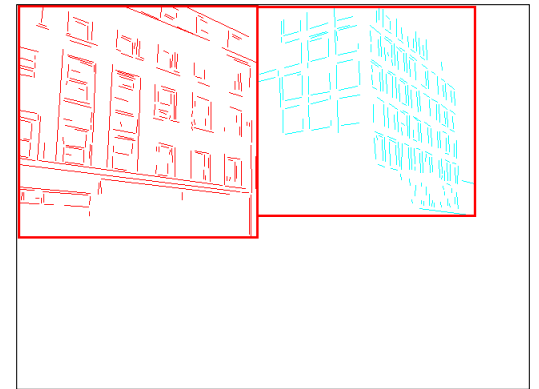
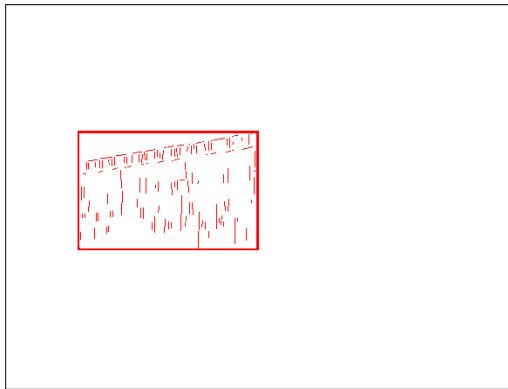
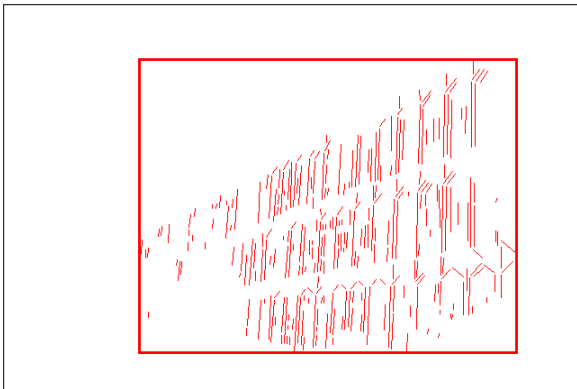
# Experimental Evaluation

- Object Recognition
  - 97 well-patterned buildings (bp): 97/97
  - 44 not well-patterned buildings (bnp): 42/44
  - 16 not patterned non-buildings (nbnp): 15/16  
(one false positive)
  - 25 patterned non-buildings (nbp): 0/25
- CBIR



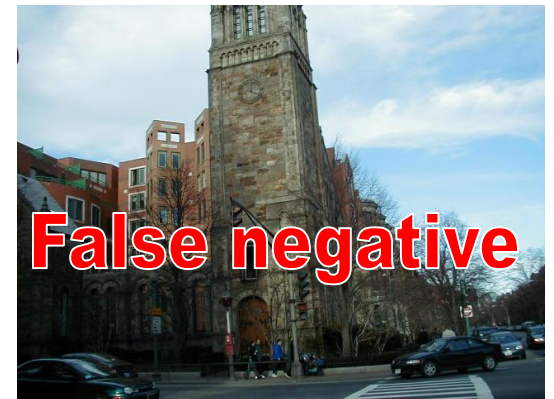
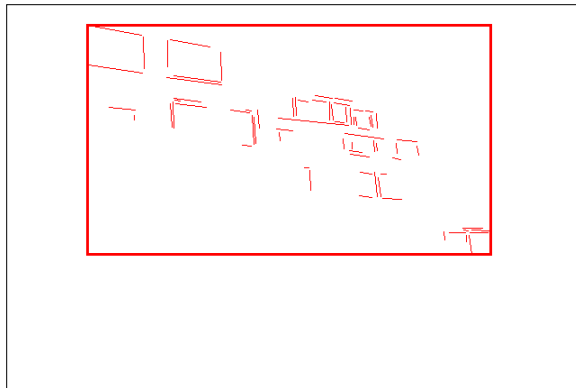
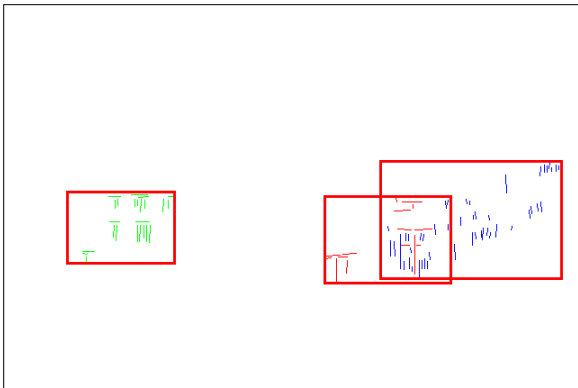
# Experimental Evaluation

## Well-Patterned Buildings



# Experimental Evaluation

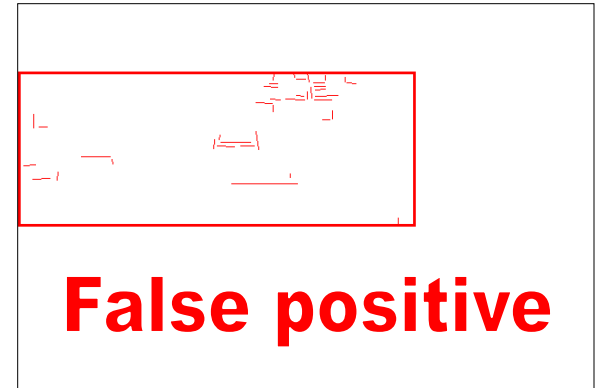
## Non-Well-Patterned Buildings





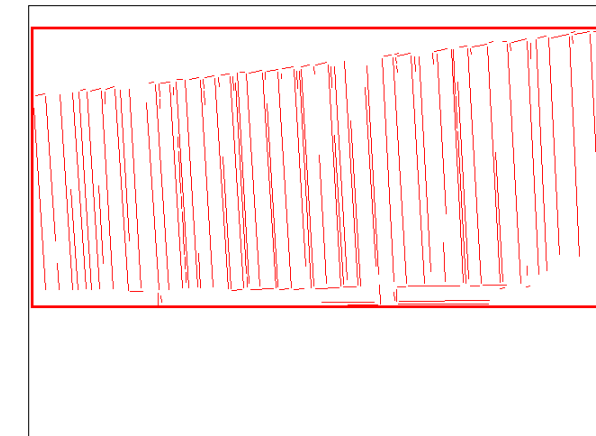
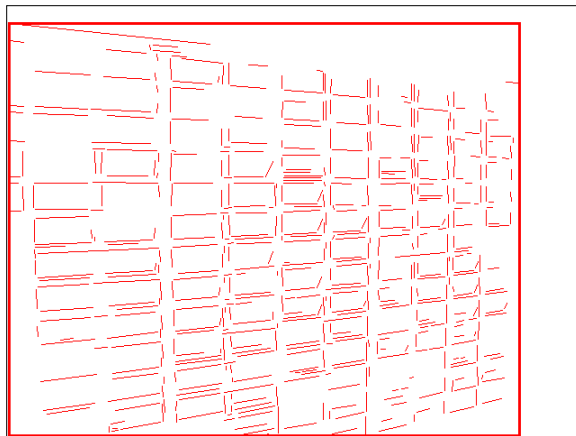
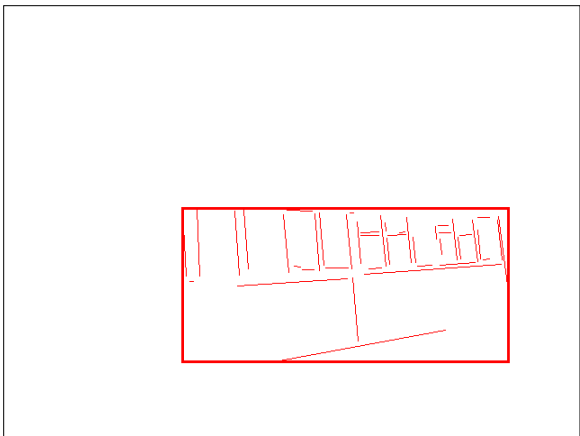
# Experimental Evaluation

## Non-Well-Patterned Non-Buildings



# Experimental Evaluation

## Well-Patterned Non-Buildings (false positives)



# Experimental Evaluation (CBIR)

	Total Positive Classification (#)	Total Negative Classification (#)	False positive (#)	False negative (#)	Accuracy (%)
Arborgreens	0	47	0	0	100
Campusinfall	27	21	0	5	89.6
Cannonbeach	30	18	0	6	87.5
Yellowstone	4	44	4	0	91.7



# Experimental Evaluation (CBIR)

## False positives from Yellowstone



# Machine Learning!

- **Unsupervised** (given the data, no class labels)
- Supervised (given data with class labels)
- We will look at two unsupervised methods today
  - K-means
  - EM
- We saw that EM was used in Rob Fergus's work.

# Clustering

- There are  $K$  clusters  $C_1, \dots, C_K$  with means  $m_1, \dots, m_K$ .
- The **least-squares error** is defined as

$$D = \sum_{k=1}^K \sum_{x_i \in C_k} \|x_i - m_k\|^2.$$

- Out of all possible partitions into  $K$  clusters, choose the one that minimizes  $D$ .

Why don't we just do this?

If we could, would we get meaningful objects?



# K-Means Clustering

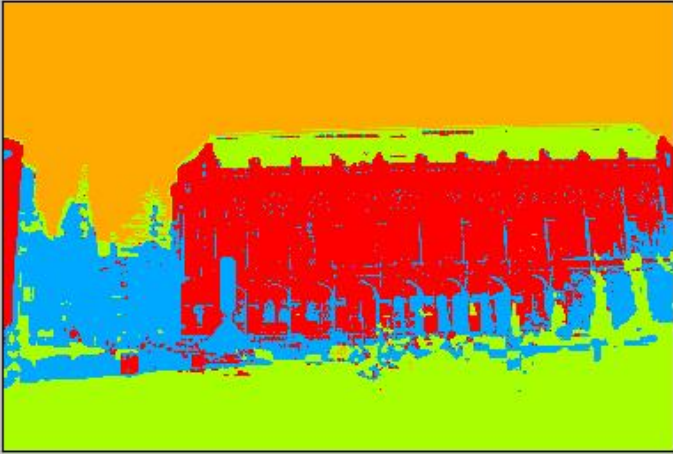

Form K-means clusters from a set of n-dimensional vectors

1. Set  $ic$  (iteration count) to 1
2. Choose randomly a set of  $K$  means  $m_1(1), \dots, m_K(1)$ .
3. For each vector  $x_i$  compute  $D(x_i, m_k(ic))$ ,  $k=1, \dots, K$  and assign  $x_i$  to the cluster  $C_j$  with nearest mean.
4. Increment  $ic$  by 1, update the means to get  $m_1(ic), \dots, m_K(ic)$ .
5. Repeat steps 3 and 4 until  $C_k(ic) = C_k(ic+1)$  for all  $k$ .

# K-Means Example 1

1. Select an image:  2. Select a processor:  3. Click

Options:  
Init Method



640\*480 (590,68): RGB(158,206,229) Process done !

# K-Means Example 2

1. Select an image:  2. Select a processor:  3. Click

Options:  
Init Method

640\*480 (636,95): RGB(102,130,151)

Process done ! (590,209): RGB(0,46,255)

# K-Means Example 3

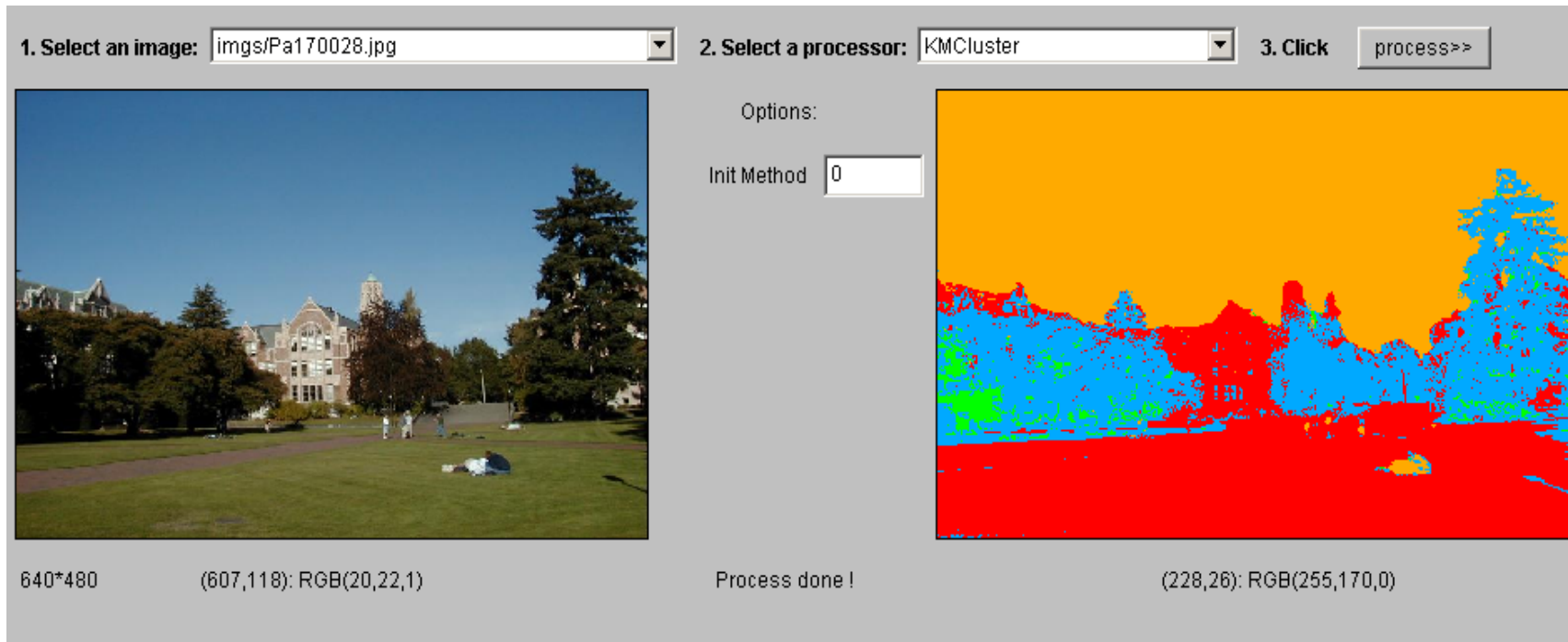
1. Select an image:  2. Select a processor:  3. Click

Options:  
Init Method

640\*480 (607,118): RGB(20,22,1)

Process done!

(228,26): RGB(255,170,0)



# K-means Variants

- Different ways to initialize the means
- Different stopping criteria
- Dynamic methods for determining the right number of clusters ( $K$ ) for a given image
- The EM Algorithm: a probabilistic formulation

# K-Means

- Boot Step:

- Initialize  $K$  clusters:  $C_1, \dots, C_K$

- Each cluster is represented by its mean  $m_j$

- Iteration Step:

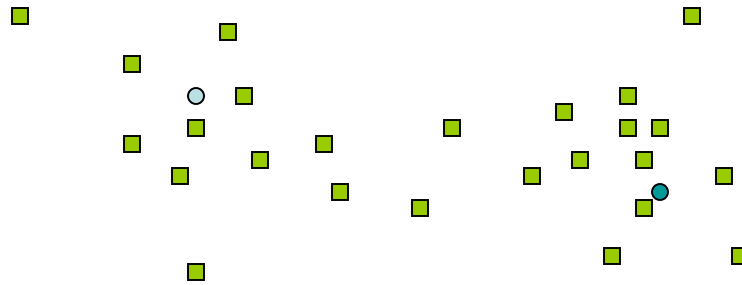
- Estimate the cluster for each data point

$$x_i \implies C(x_i)$$

- Re-estimate the cluster parameters

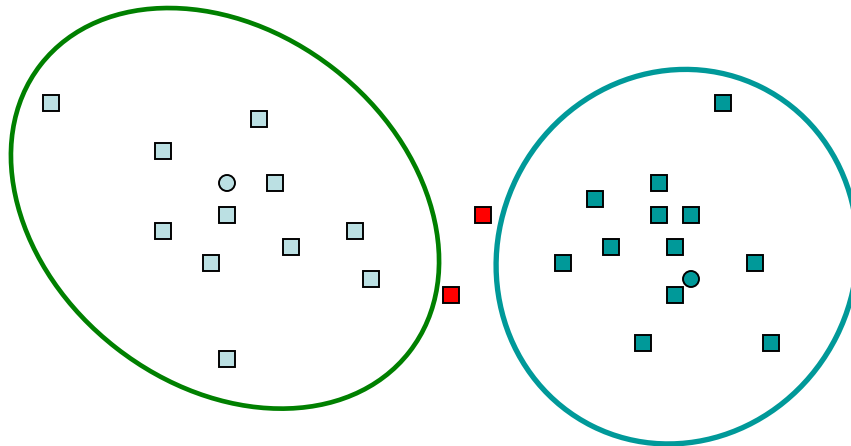
$$m_j = \text{mean}\{x_i \mid x_i \in C_j\}$$

# K-Means Example



# K-Means Example

Where do the red points belong?





# K-Means → EM

- Boot Step:

- Initialize  $K$  clusters:  $C_1, \dots, C_K$

- $(\mu_j, \Sigma_j)$  and  $P(C_j)$  for each cluster  $j$ .

- Iteration Step:

- Estimate the cluster of each data point

- $p(C_j | x_i)$

→ Expectation

- Re-estimate the cluster parameters

- $(\mu_j, \Sigma_j), p(C_j)$  For each cluster  $j$

→ Maximization

# What is a covariance matrix

- For a multidimensional distribution of  $n$  dimensions  $(X_1, X_2, \dots, X_n)$ :

- Its mean  $\mu$  is a vector  $\mu = (x_1, x_2, \dots, x_n)$

Example:  $\mu = (r, g, b)$

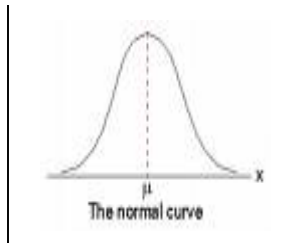
- Its covariance matrix gives the variances and covariances for pairs of variables:

$\Sigma =$  a matrix in which  $\Sigma_{ii} = \sigma_i^2$  (variance)

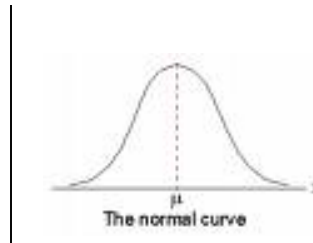
and  $\Sigma_{ij} = \text{Cov}(X_i, X_j)$  (covariance of two)

# 1-D EM with Gaussian Distributions

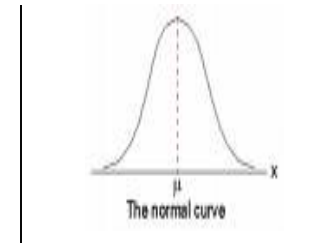
- Each cluster  $C_j$  is represented by a Gaussian distribution  $N(\mu_j, \sigma_j)$ .
- Initialization: For each cluster  $C_j$  initialize its mean  $\mu_j$ , variance  $\sigma_j$ , and weight  $\alpha_j$ .



$$N(\mu_1, \sigma_1)$$
$$\alpha_1 = P(C_1)$$



$$N(\mu_2, \sigma_2)$$
$$\alpha_2 = P(C_2)$$



$$N(\mu_3, \sigma_3)$$
$$\alpha_3 = P(C_3)$$

# Expectation

- For each point  $x_i$  and each cluster  $C_j$  compute  $P(C_j | x_i)$ .
- $P(C_j | x_i) = P(x_i | C_j) P(C_j) / P(x_i)$
- $P(x_i) = \sum_j P(x_i | C_j) P(C_j)$
- Where do we get  $P(x_i | C_j)$  and  $P(C_j)$ ?

1. Use the pdf for a normal distribution:

$$P(x_i | C_j) = \frac{1}{\sqrt{2\pi} \sigma_j} e^{-\frac{(x_i - \mu_j)^2}{2\sigma_j^2}}$$

2. Use  $\alpha_j = P(C_j)$  from the current parameters of cluster  $C_j$ .

# Maximization

- Having computed  $P(C_j | x_i)$  for each point  $x_i$  and each cluster  $C_j$ , use them to compute new mean, variance, and weight for each cluster.

$$\mu_j = \frac{\sum_i p(C_j | x_i) \cdot x_i}{\sum_i p(C_j | x_i)}$$

$$\Sigma_j = \frac{\sum_i p(C_j | x_i) \cdot (x_i - \mu_j) \cdot (x_i - \mu_j)^T}{\sum_i p(C_j | x_i)}$$

$$p(C_j) = \frac{\sum_i p(C_j | x_i)}{N}$$

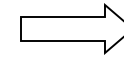
# Multi-Dimensional Expectation Step for Color Image Segmentation

Input (Known)

$$\begin{array}{l} x_1 = \{r_1, g_1, b_1\} \\ x_2 = \{r_2, g_2, b_2\} \\ \dots \\ x_i = \{r_i, g_i, b_i\} \\ \dots \end{array}$$

Input (Estimation)

$$+ \begin{array}{l} \text{Cluster Parameters} \\ (\mu_1, \Sigma_1), p(C_1) \text{ for } C_1 \\ (\mu_2, \Sigma_2), p(C_2) \text{ for } C_2 \\ \dots \\ (\mu_k, \Sigma_k), p(C_k) \text{ for } C_k \end{array}$$



Output

$$\begin{array}{l} \text{Classification Results} \\ p(C_1 | x_1) \\ p(C_j | x_2) \\ \dots \\ p(C_j | x_i) \\ \dots \end{array}$$

$$p(C_j | x_i) = \frac{p(x_i | C_j) \cdot p(C_j)}{p(x_i)} = \frac{p(x_i | C_j) \cdot p(C_j)}{\sum_j p(x_i | C_j) \cdot p(C_j)}$$

# Multi-dimensional Maximization Step for Color Image Segmentation

Input (Known)

$$\begin{array}{l} x_1 = \{r_1, g_1, b_1\} \\ x_2 = \{r_2, g_2, b_2\} \\ \dots \\ x_i = \{r_i, g_i, b_i\} \\ \dots \end{array}$$

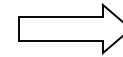
Input (Estimation)

$$\begin{array}{l} \text{Classification Results} \\ p(C_1|x_1) \\ p(C_j|x_2) \\ \dots \\ p(C_j|x_i) \\ \dots \end{array}$$

Output

$$\begin{array}{l} \text{Cluster Parameters} \\ (\mu_1, \Sigma_1), p(C_1) \text{ for } C_1 \\ (\mu_2, \Sigma_2), p(C_2) \text{ for } C_2 \\ \dots \\ (\mu_k, \Sigma_k), p(C_k) \text{ for } C_k \end{array}$$

+



$$\mu_j = \frac{\sum_i p(C_j | x_i) \cdot x_i}{\sum_i p(C_j | x_i)} \quad \Sigma_j = \frac{\sum_i p(C_j | x_i) \cdot (x_i - \mu_j) \cdot (x_i - \mu_j)^T}{\sum_i p(C_j | x_i)} \quad p(C_j) = \frac{\sum_i p(C_j | x_i)}{N}$$



# Full EM Algorithm

## Multi-Dimensional

- Boot Step:

- Initialize  $K$  clusters:  $C_1, \dots, C_K$

$(\mu_j, \Sigma_j)$  and  $P(C_j)$  for each cluster  $j$ .

- Iteration Step:

- Expectation Step

$$p(C_j | x_i) = \frac{p(x_i | C_j) \cdot p(C_j)}{p(x_i)} = \frac{p(x_i | C_j) \cdot p(C_j)}{\sum_j p(x_i | C_j) \cdot p(C_j)}$$

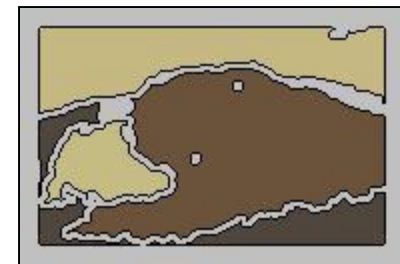
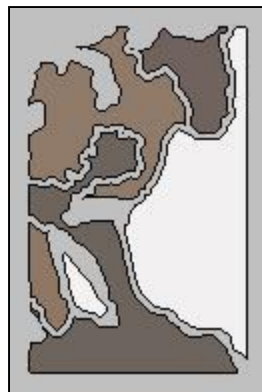
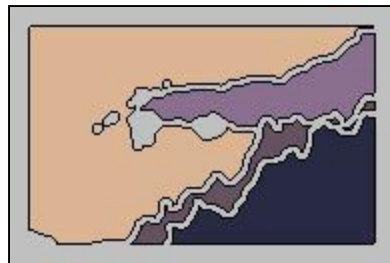
- Maximization Step

$$\mu_j = \frac{\sum_i p(C_j | x_i) \cdot x_i}{\sum_i p(C_j | x_i)} \quad \Sigma_j = \frac{\sum_i p(C_j | x_i) \cdot (x_i - \mu_j) \cdot (x_i - \mu_j)^T}{\sum_i p(C_j | x_i)} \quad p(C_j) = \frac{\sum_i p(C_j | x_i)}{N}$$

# EM Applications

- Blobworld: Image segmentation using Expectation-Maximization and its application to image querying
- Used both color and texture features with the EM algorithm.

# Blobworld: Sample Results



# EM Classifier Approach

## Object Class Recognition using Images of Abstract Regions

Yi Li, Jeff A. Bilmes, and Linda G. Shapiro  
Department of Computer Science and Engineering  
Department of Electrical Engineering  
University of Washington

# Problem Statement

**Given:** Some images and their corresponding descriptions



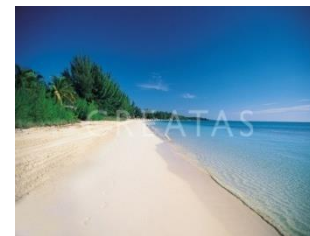
{trees, grass, cherry trees}



{cheetah, trunk}



{mountains, sky}



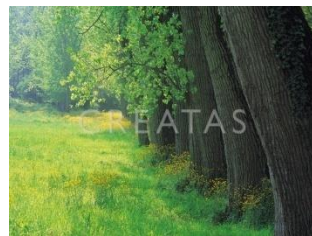
{beach, sky, trees, water}

...

**To solve:** What object classes are present in new images



?



?



?

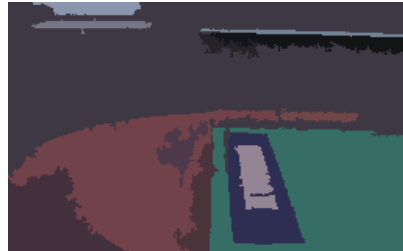


?

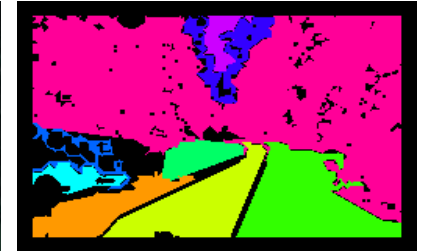
...

# Image Features for Object Recognition

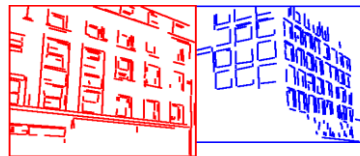
- Color



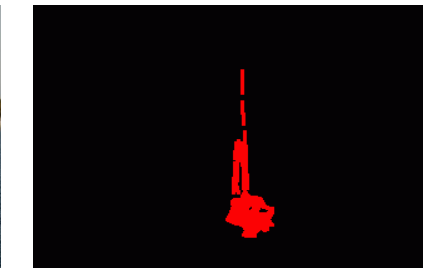
- Texture



- Structure



- Context



# Abstract Regions

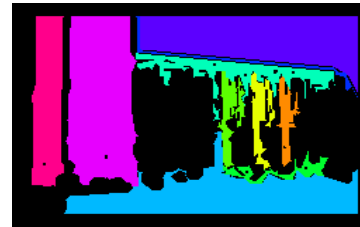
Original Images



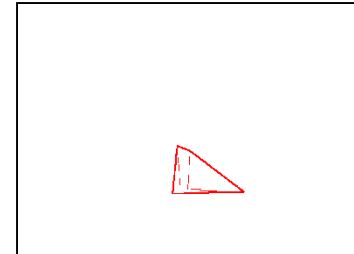
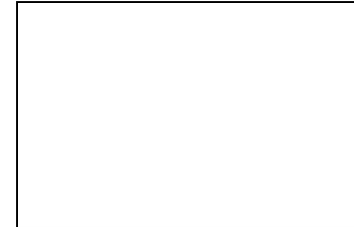
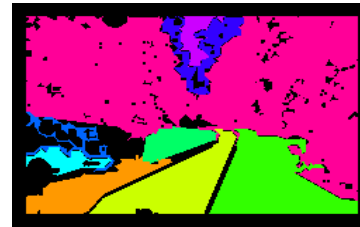
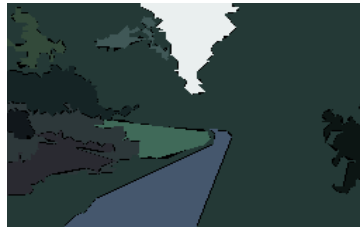
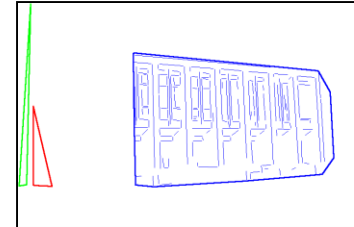
Color Regions



Texture Regions



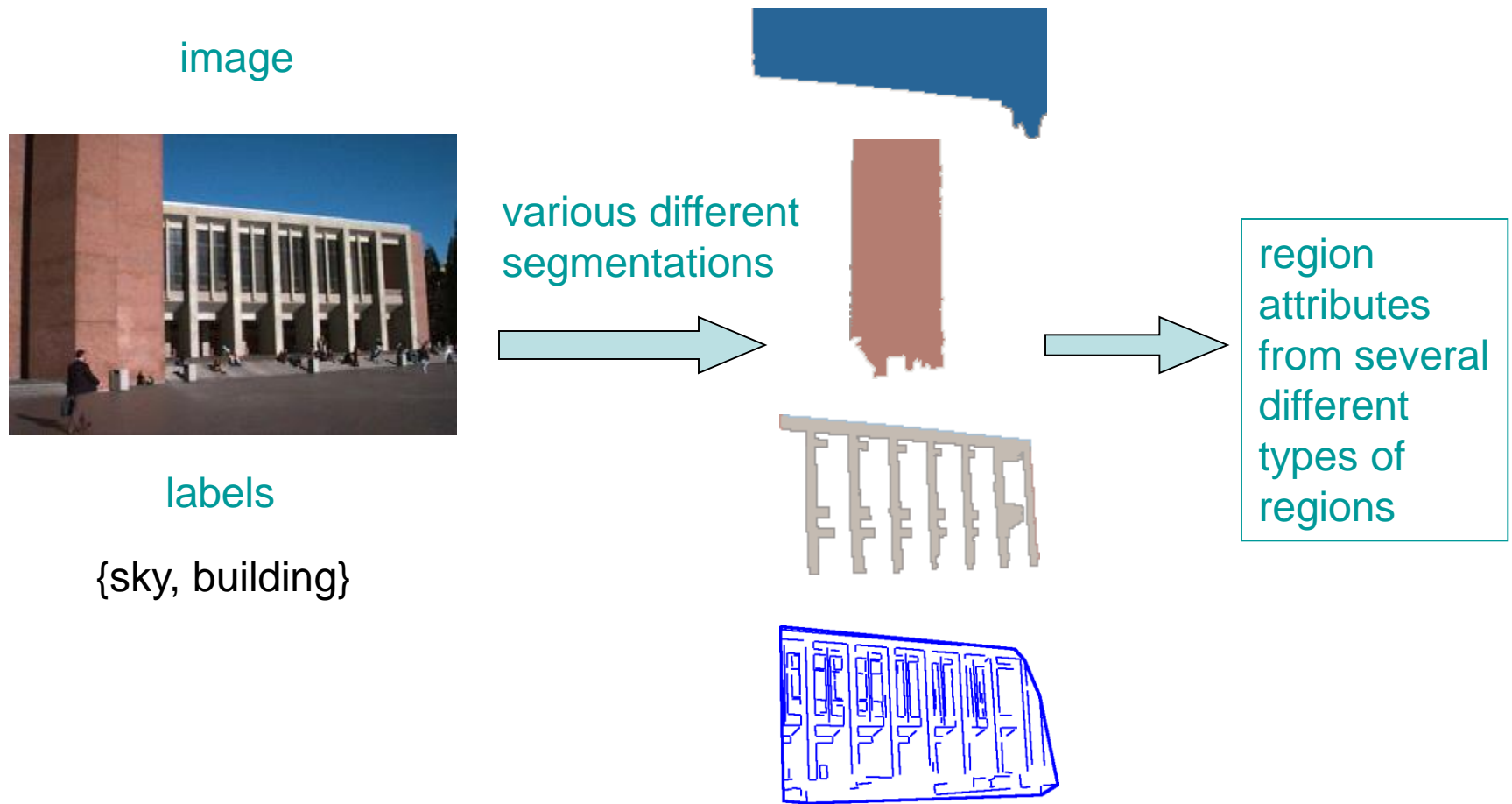
Line Clusters





# Abstract Regions

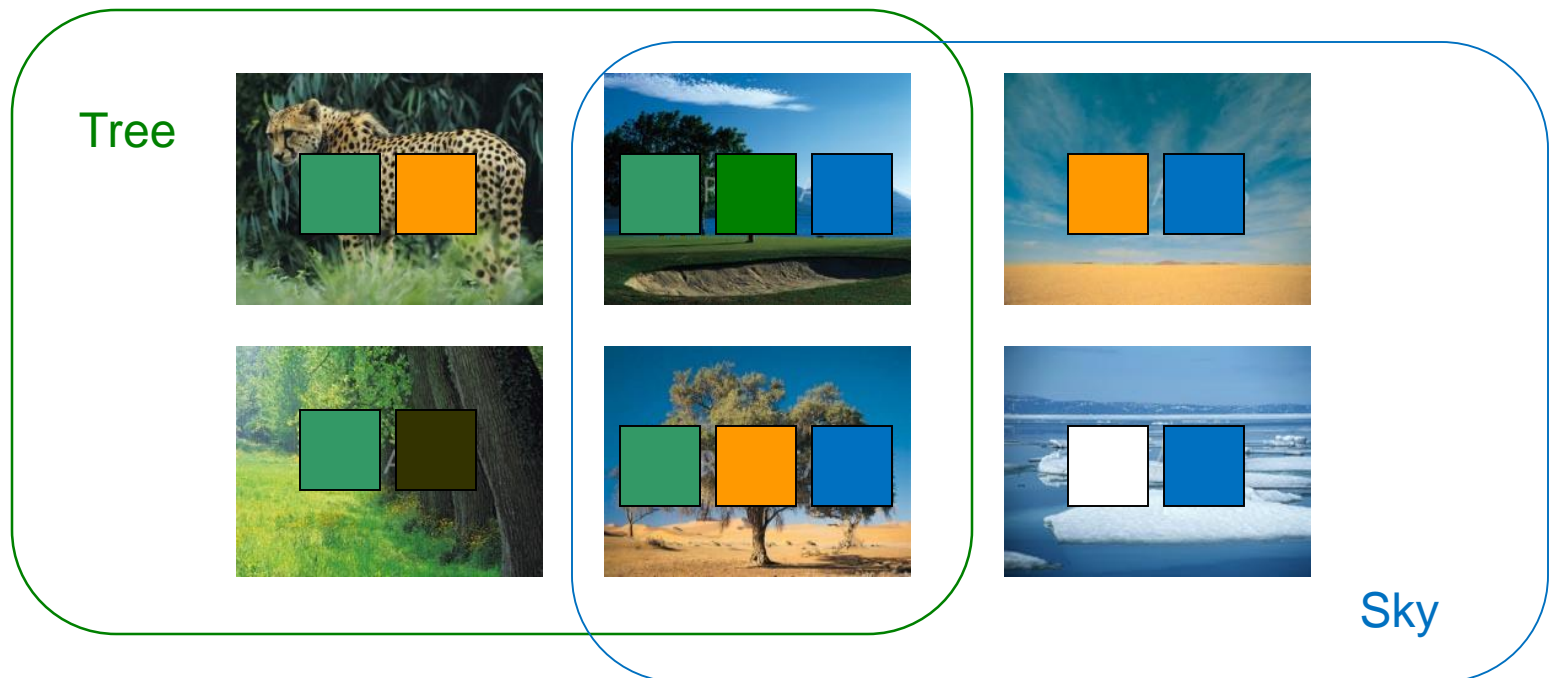
Multiple segmentations whose regions are not labeled; a list of labels is provided for each training image.





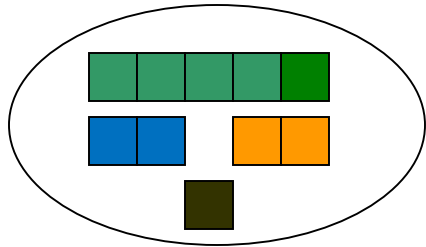
# Model Initial Estimation

- Estimate the initial model of an object using all the region features from all images that contain the object

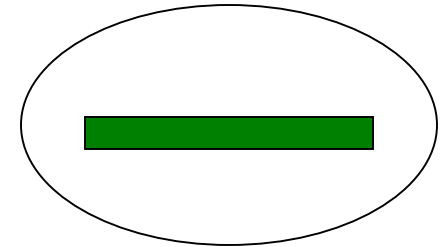


# EM Classifier: the Idea

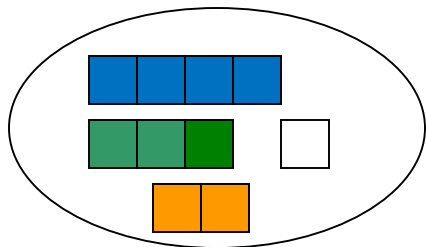
Initial Model for "trees"



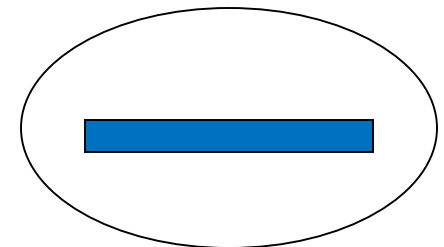
Final Model for "trees"



Initial Model for "sky"



Final Model for "sky"



EM

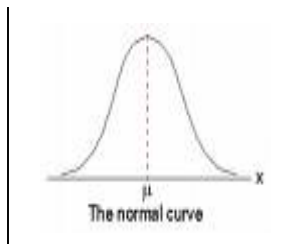


# EM Algorithm

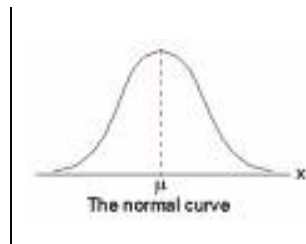
- Start with **K clusters**, each represented by a **probability distribution**
- Assuming a **Gaussian** or Normal distribution, each cluster is represented by its **mean and variance** (or covariance matrix) and has a weight.
- Go through the training data and soft-assign it to each cluster. Do this by **computing the probability that each training vector belongs to each cluster**.
- Using the results of the soft assignment, **recompute the parameters of each cluster**.
- Perform the last 2 steps iteratively.

# 1-D EM with Gaussian Distributions

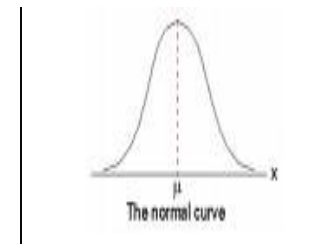
- Each cluster  $C_j$  is represented by a Gaussian distribution  $N(\mu_j, \sigma_j)$ .
- Initialization: For each cluster  $C_j$  initialize its mean  $\mu_j$ , variance  $\sigma_j$ , and weight  $\alpha_j$ .



$$N(\mu_1, \sigma_1)$$
$$\alpha_1 = P(C_1)$$



$$N(\mu_2, \sigma_2)$$
$$\alpha_2 = P(C_2)$$



$$N(\mu_3, \sigma_3)$$
$$\alpha_3 = P(C_3)$$

- With no other knowledge, use random means and variances and equal weights.

# Standard EM to EM Classifier

- That's the standard EM algorithm.
- For n-dimensional data, the variance becomes a co-variance matrix, which changes the formulas slightly.
- But **we used an EM variant to produce a classifier.**
- The next slide indicates the differences between what we used and the standard.

# EM Classifier

1. **Fixed Gaussian components** (one Gaussian per object class) and **fixed weights** corresponding to the frequencies of the corresponding objects in the training data.
2. **Customized initialization** uses only the training images that contain a particular object class to initialize its Gaussian.
3. **Controlled expectation step** ensures that a feature vector only contributes to the Gaussian components representing objects present in its training image.
4. **Extra background component** absorbs noise.

Gaussian for  
trees

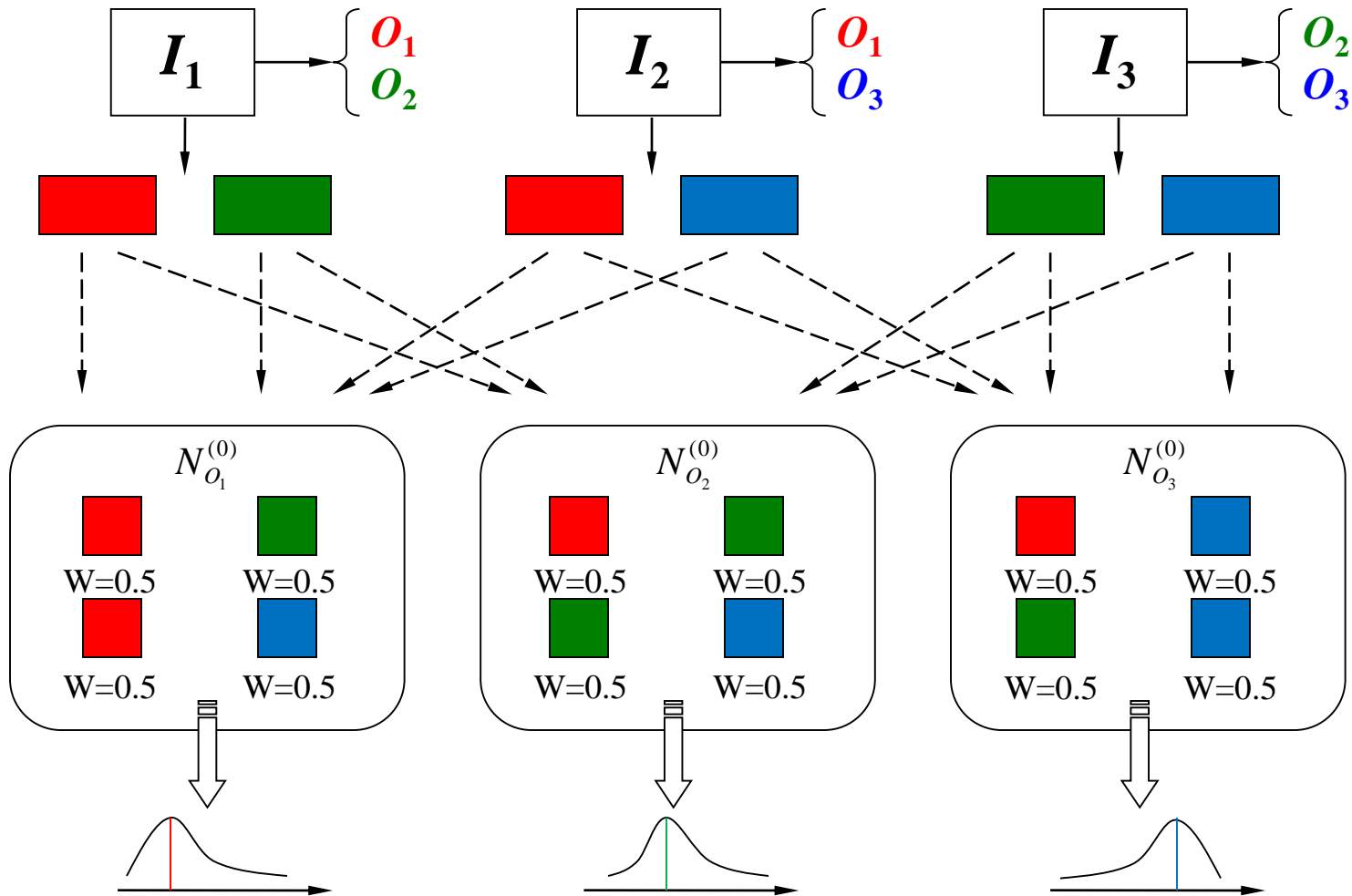
Gaussian for  
buildings

Gaussian for  
sky

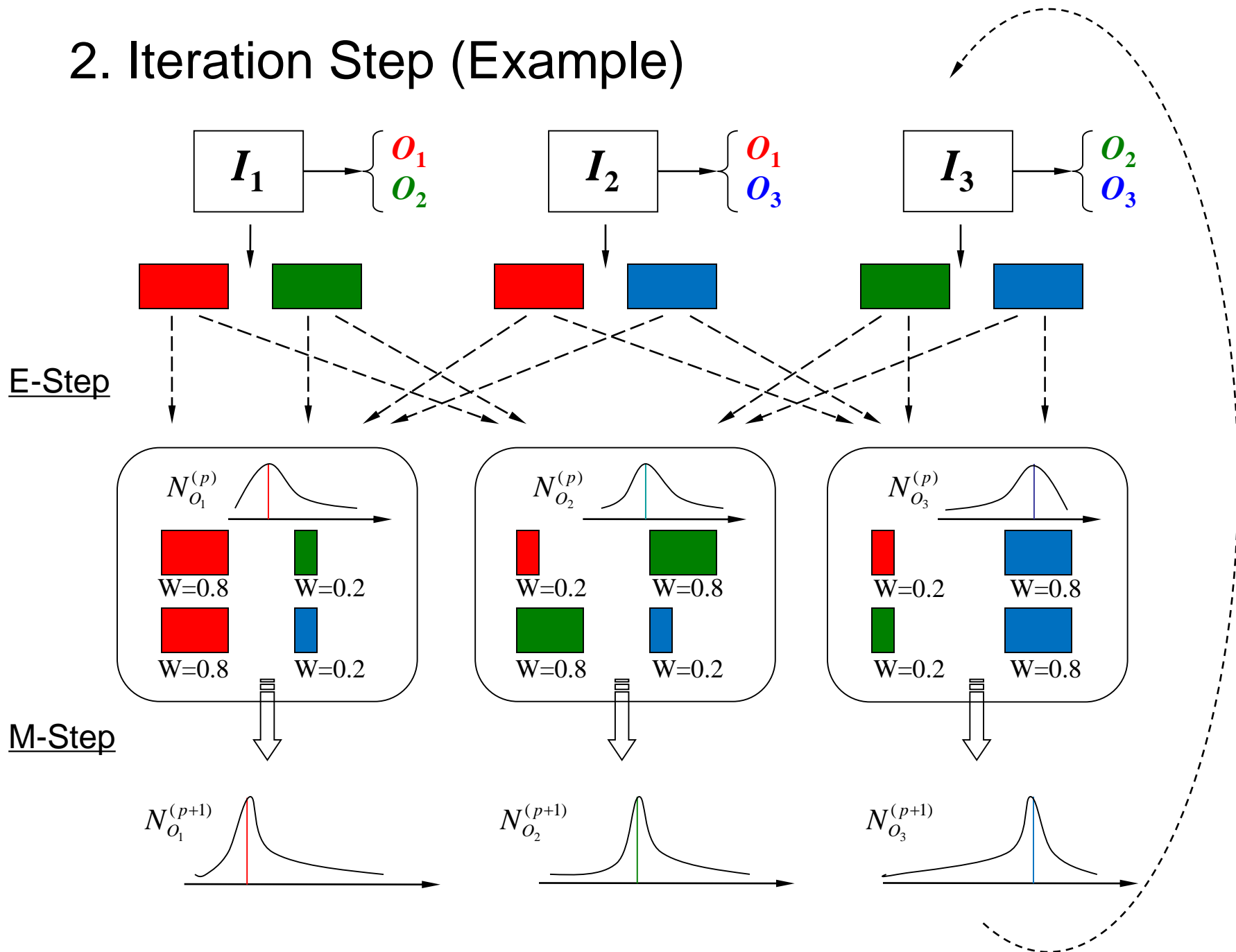
Gaussian for  
background

# 1. Initialization Step (Example)

Image & description

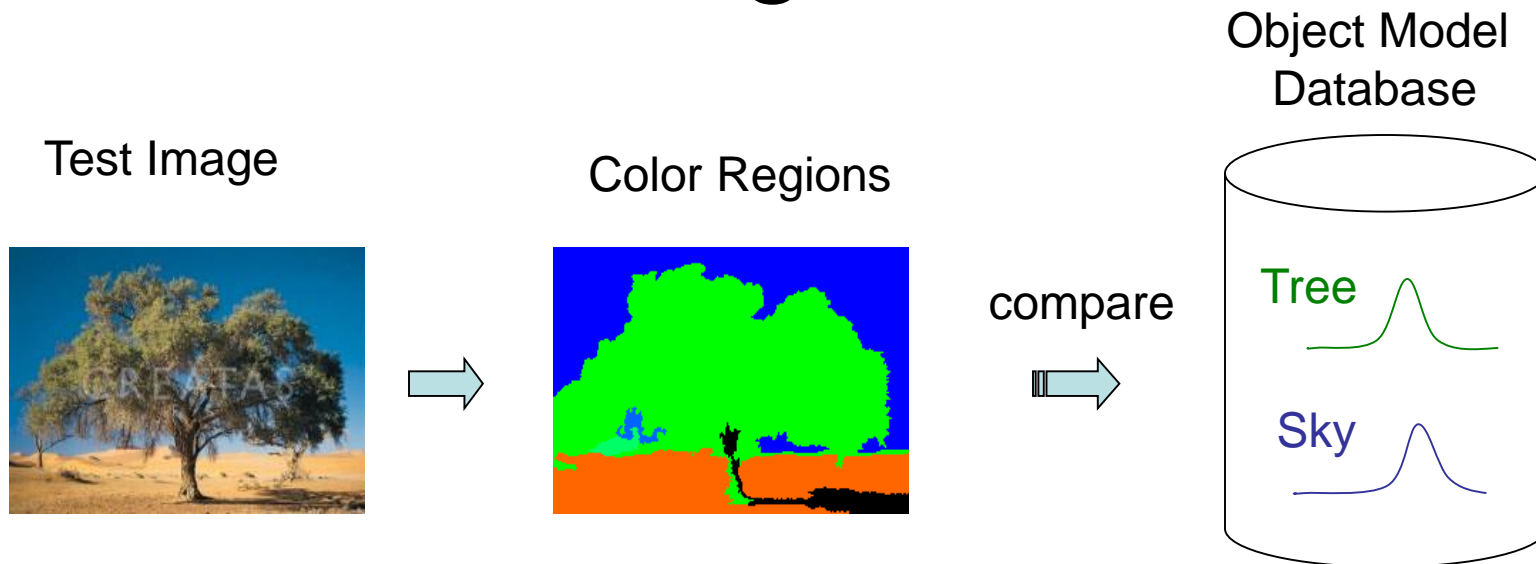


## 2. Iteration Step (Example)





# Recognition



How do you decide if a particular object is in an image?

To calculate  $p(\text{tree} \mid \text{image})$

$$p(\text{tree} \mid \text{image}) = f \left( \begin{array}{l} p(\text{tree} \mid \text{blue}) \\ p(\text{tree} \mid \text{green}) \\ p(\text{tree} \mid \text{orange}) \\ p(\text{tree} \mid \text{black}) \end{array} \right)$$

$f$  is a function that combines probabilities from all the color regions in the image.

e.g. max or mean

# Combining different types of abstract regions: First Try

- Treat the different types of regions **independently** and combine at the time of classification.

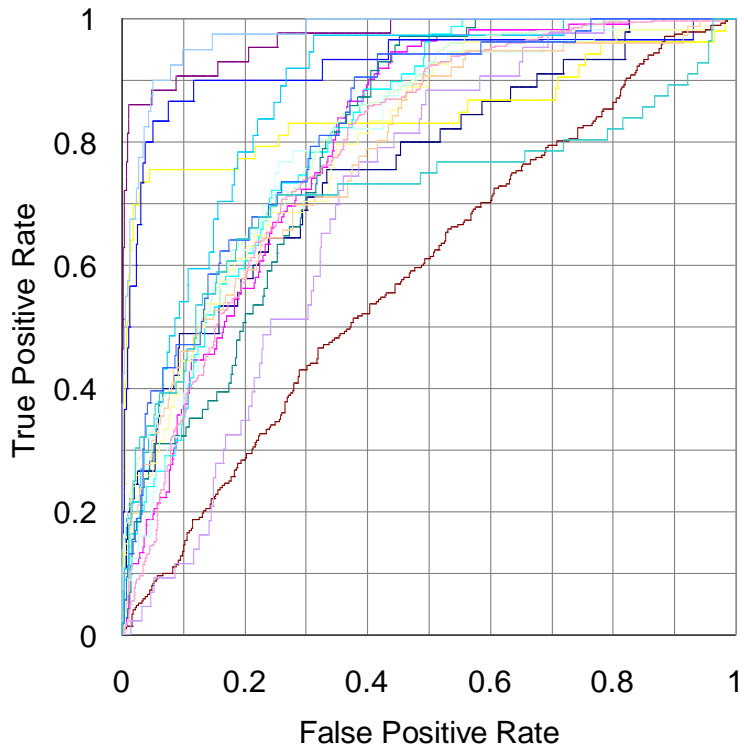
1.  $P(\text{object} | a_1, a_2, \dots, a_n) = P(\text{object} | a_1) \dots P(\text{object} | a_n)$

2. Form **intersections** of the different types of regions, creating smaller regions that have both color and texture properties for classification.

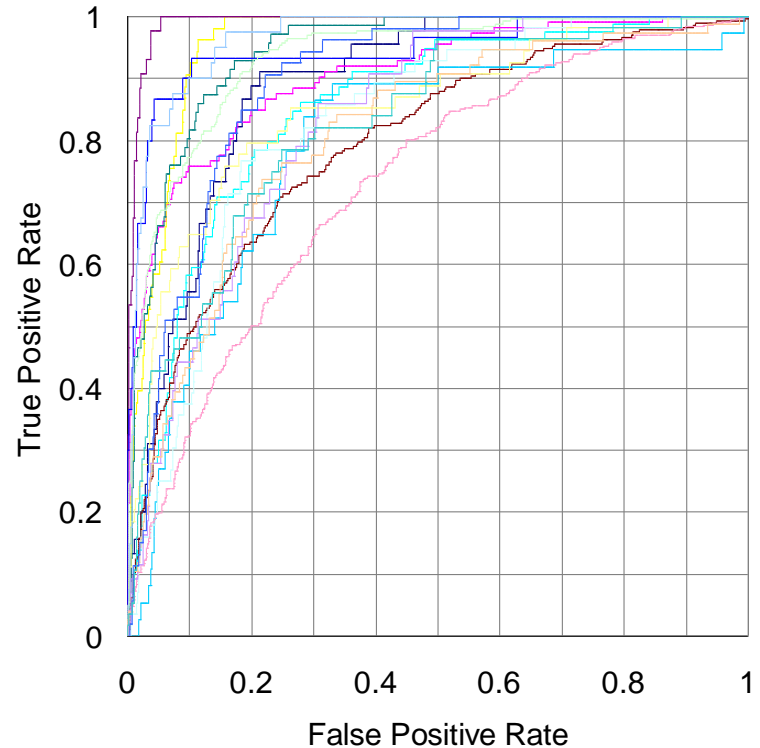
# Experiments (on 860 images)

- 18 keywords: mountains (30), orangutan (37), track (40), tree trunk (43), football field (43), beach (45), prairie grass (53), cherry tree (53), snow (54), zebra (56), polar bear (56), lion (71), water (76), chimpanzee (79), cheetah (112), sky (259), grass (272), tree (361).
- A set of cross-validation experiments (80% as training set and the other 20% as test set)
- The poorest results are on object classes “tree,” “grass,” and “water,” each of which has a high variance; a single Gaussian model is insufficient.

# ROC Charts: True Positive vs. False Positive



Independent Treatment of  
Color and Texture



Using Intersections of  
Color and Texture Regions

# Sample Retrieval Results

cheetah





# Sample Results (Cont.)

grass



# Sample Results (Cont.)

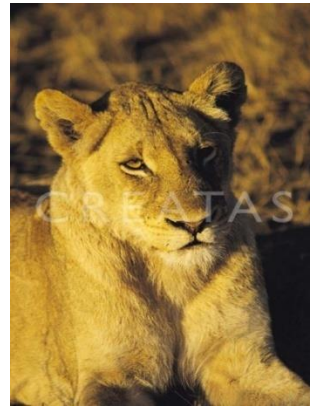
cherry tree





# Sample Results (Cont.)

lion





# Summary

- Designed a set of abstract region features: **color**, **texture**, **structure**, . . .
- Developed a new **semi-supervised EM-like algorithm** to recognize object classes in color photographic images of outdoor scenes; tested on 860 images.
- Compared **two different methods of combining** different types of abstract regions. The intersection method had a higher performance

# Weakness of the EM Classifier Approach

- It did not generalize well to multiple features
- It assumed that object classes could be modeled as Gaussians