

Televisions, Video Privacy, and Powerline Electromagnetic Interference

Miro Enev, Sidhant Gupta, Yoshi Kohno, & Shwetak Patel

Security & UbiComp Labs @ **UW**

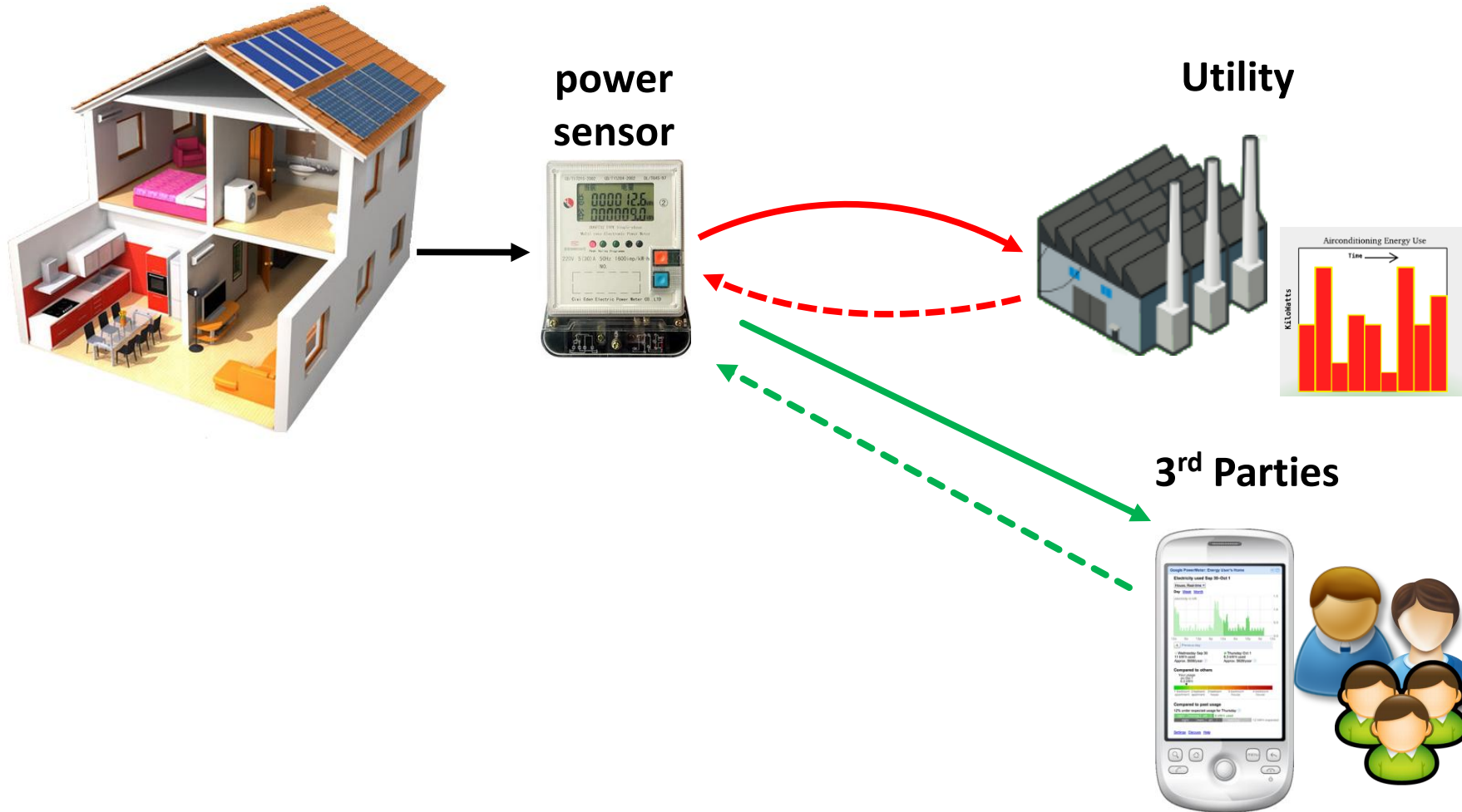




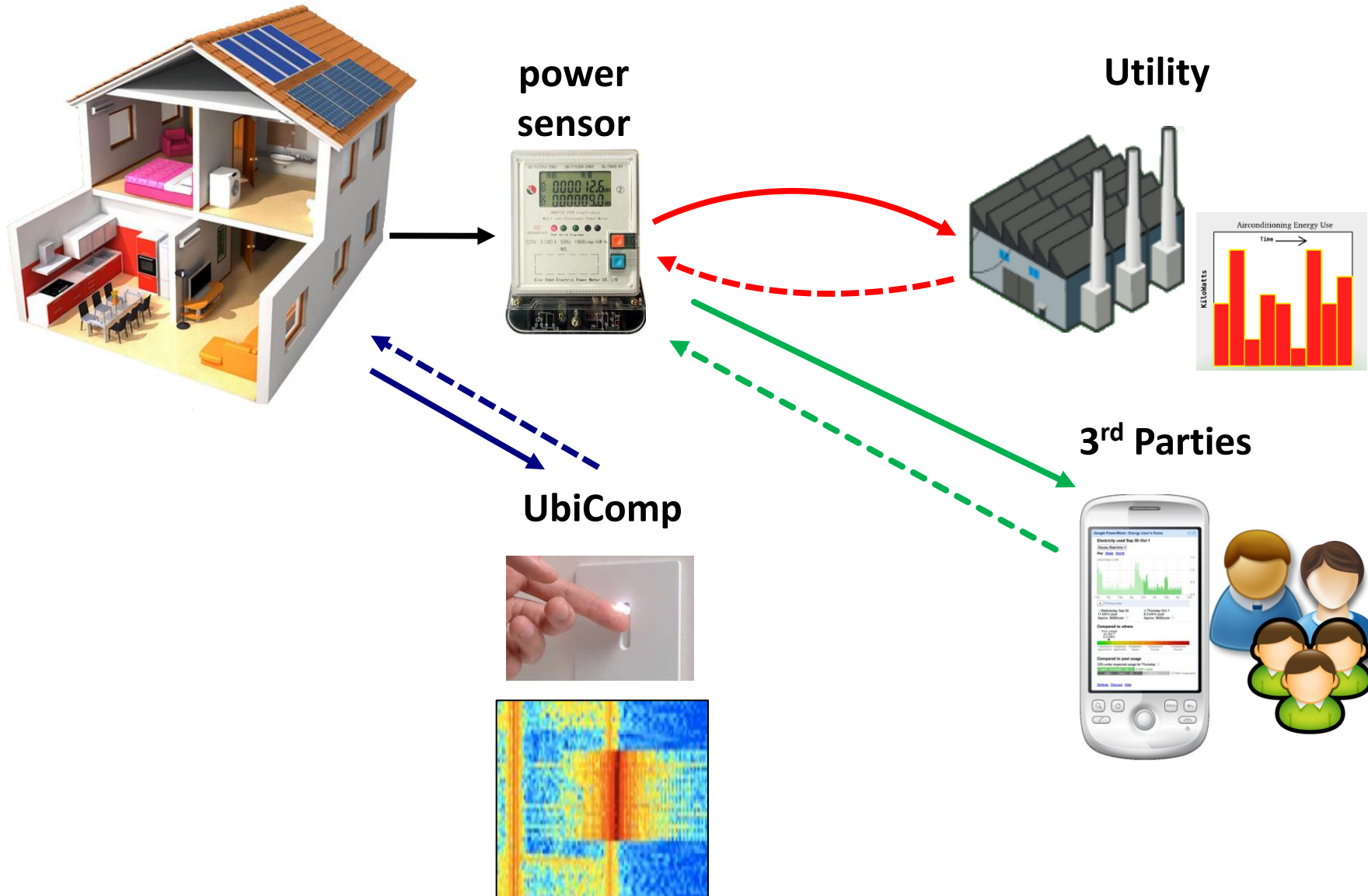
Smart Home = Smart Devices + Smart Sensors



The Picture Today



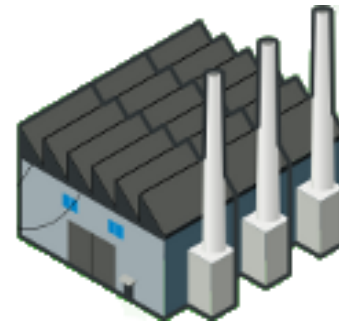
The Picture Today



Emerging Trends:

Sophisticated electrical sensors are already deployed in homes to help achieve new efficiency and utility goals.

Benefactors:



Research Q:

What **private information** is available from the powerline?



Research Q:

What **private information** is available from the powerline?

Answer:

Modern TVs leak **substantial information** on the power line that is indicative of the **screen content**



Research Q:

What **private information** is available from the powerline?

Answer:

Modern TVs leak **substantial information** on the power line that is indicative of the **screen content**

Information can be collected using a **single sensor** installed anywhere on power line



What's the **BIG** deal?

U.S. Video Protection & Privacy Act of 1998 states that video viewing records **be kept private**

TITLE 18 > PART I > CHAPTER 121 > § 2710

§ 2710. WRONGFUL DISCLOSURE OF VIDEO TAPE RENTAL OR SALE RECORDS

(a) Definitions.— For purposes of this section—

- (1)** the term “consumer” means any renter, purchaser, or subscriber of goods or services from a video tape service provider;
- (2)** the term “ordinary course of business” means only debt collection activities, order fulfillment, request processing, and the transfer of ownership;
- (3)** the term “personally identifiable information” includes information which identifies a person as having requested or obtained specific video materials or services from a video tape service provider; and
- (4)** the term “video tape service provider” means any person, engaged in the business, in or affecting interstate or foreign commerce, of rental, sale, or delivery of prerecorded video cassette tapes or similar audio visual materials, or any person or other entity to whom a disclosure is made under subparagraph (D) or (E) of subsection (b)(2), but only with respect to the information contained in the disclosure.

What's the **BIG** deal?

U.S. Video Protection & Privacy Act of 1998 states that video viewing records **be kept private**

A screenshot of a news article header. The main title is 'THREAT LEVEL' in large, bold, red and black letters. Below it is a subtitle 'PRIVACY, CRIME AND SECURITY ONLINE' in smaller, grey letters. To the right is a graphic of a red arc with a vertical line, resembling a gauge or a stylized 'A'. Below the subtitle is the article title 'Netflix Spilled Your *Brokeback Mountain* Secret, Lawsuit Claims' in bold black text.

THREAT LEVEL

PRIVACY, CRIME AND SECURITY ONLINE

Netflix Spilled Your *Brokeback Mountain* Secret, Lawsuit Claims

We hope our work can **inform future discourse** about the directions of Powerline sensing technologies

Related Work

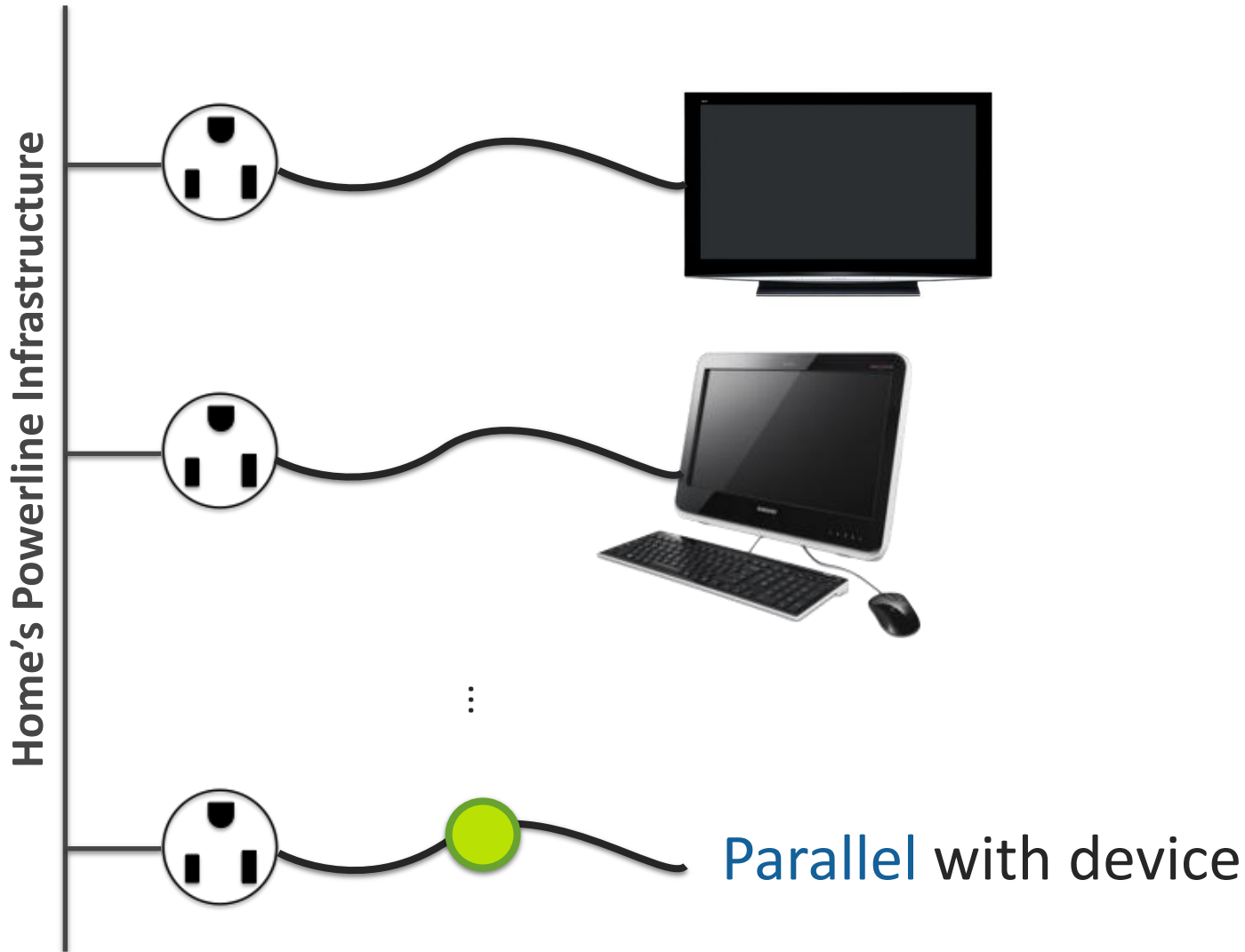
Smart Sensor Power measurements reveal private information about homeowner's activity [Markham 2010]; concurrent work also looks at TVs [Greveler 2011]

In-line power measurement of a PC can reveal web browsing habits [Clark 2011]

Power Based Measurement



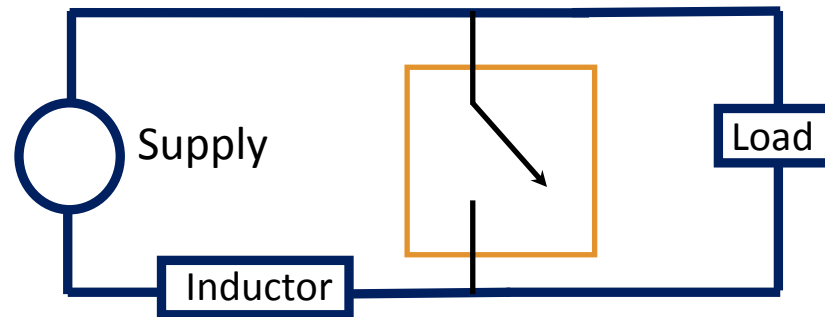
Voltage Based Measurement



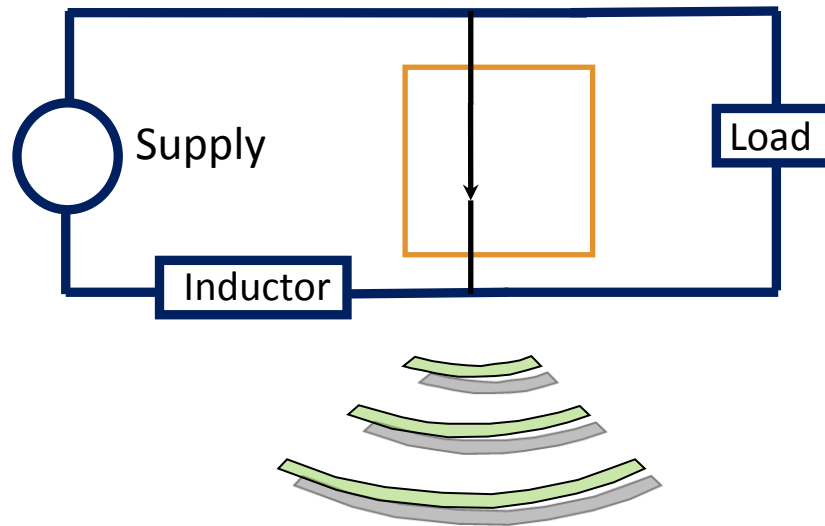
Switched Mode Power Supply



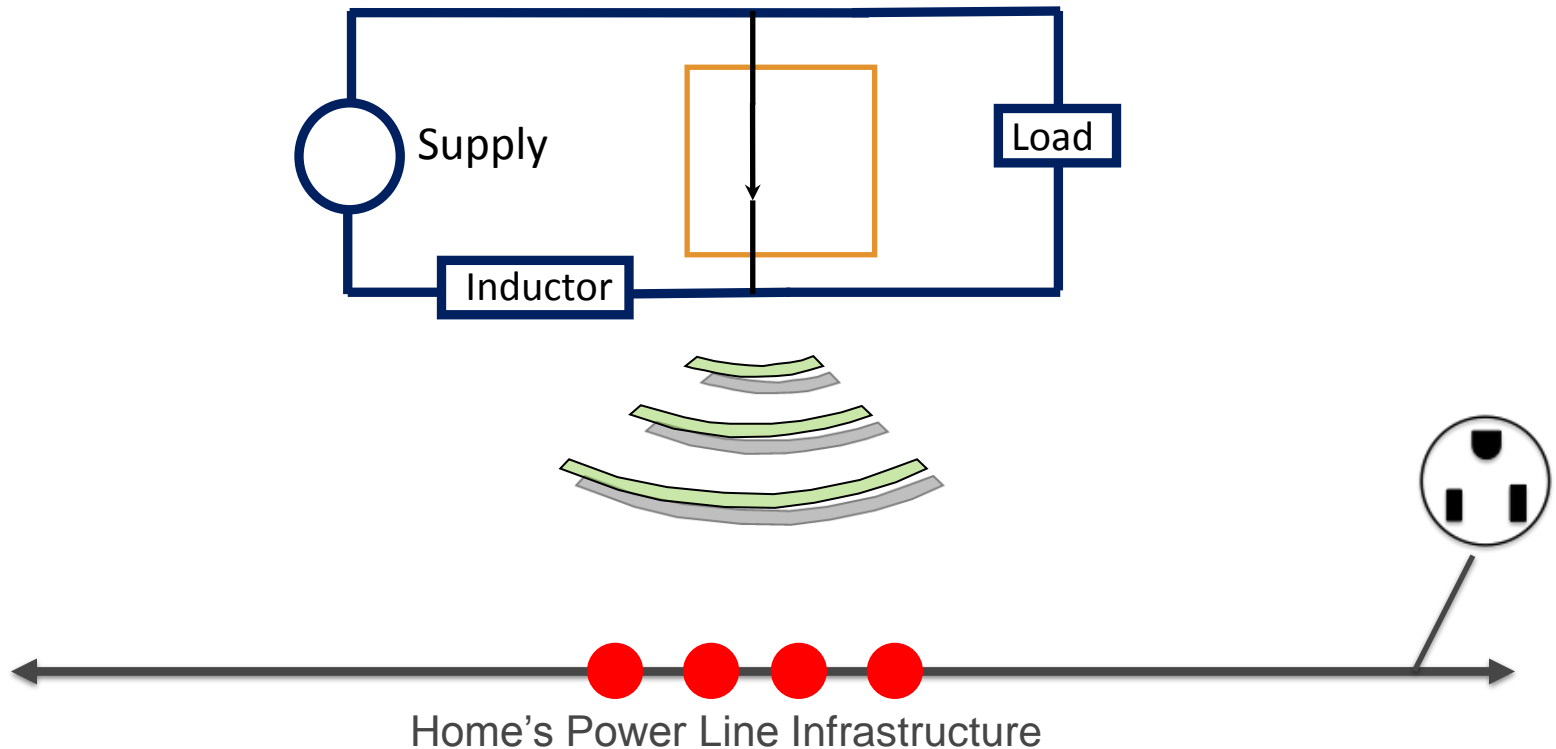
Switching Circuits generate high frequency Electro Magnetic Interference (EMI)



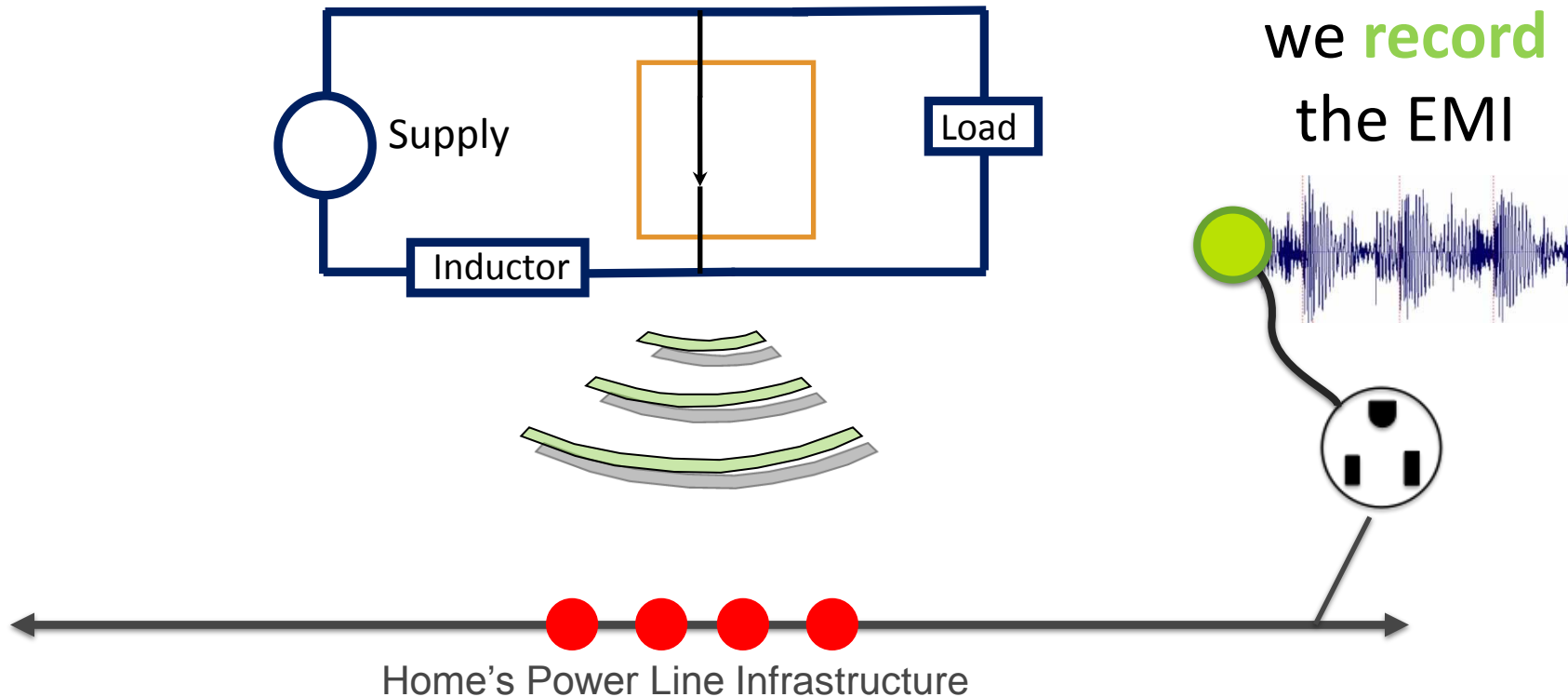
Switching Circuits generate high frequency Electro Magnetic Interference (EMI)



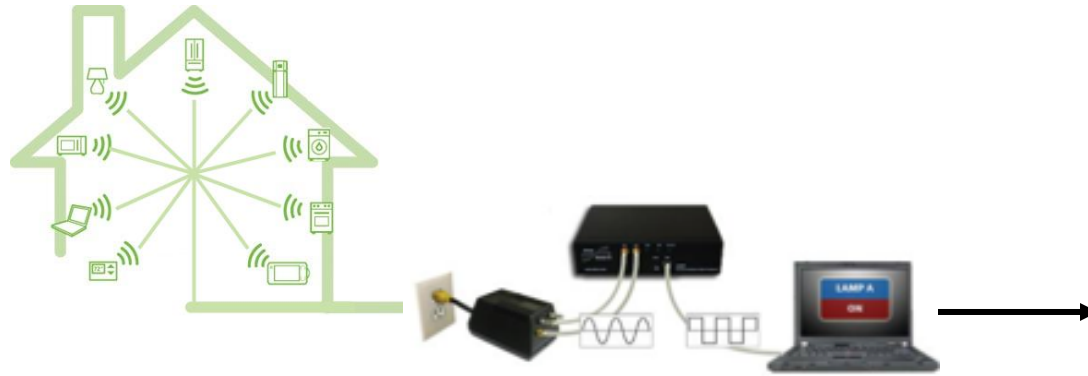
Switching Circuits generate **high frequency EMI** which **couple**s onto the powerline



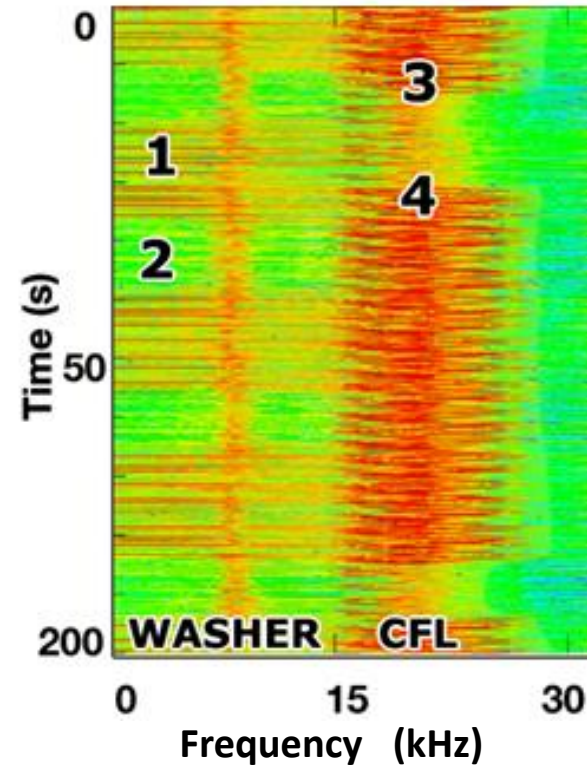
Switching Circuits generate **high frequency EMI** which **couple**s onto the powerline



EMI: Summary



ElectriSense (2010 Gupta et al.)



Many modern devices produce **EMI!**

EMI can be collected with a **single sensor!**

Signals live in the **frequency domain!**

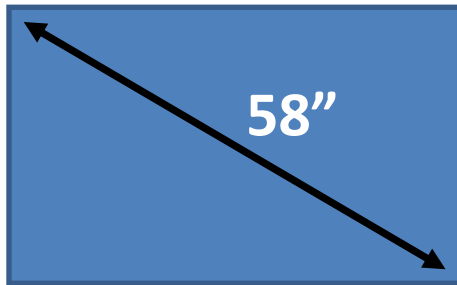


EMI @ Home

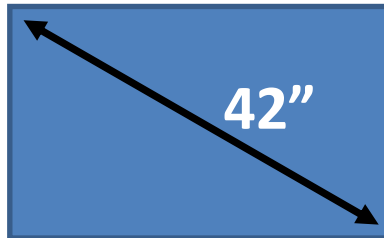




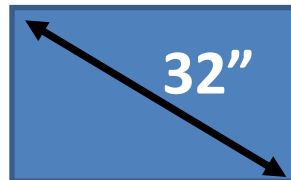
Our 8 TVs



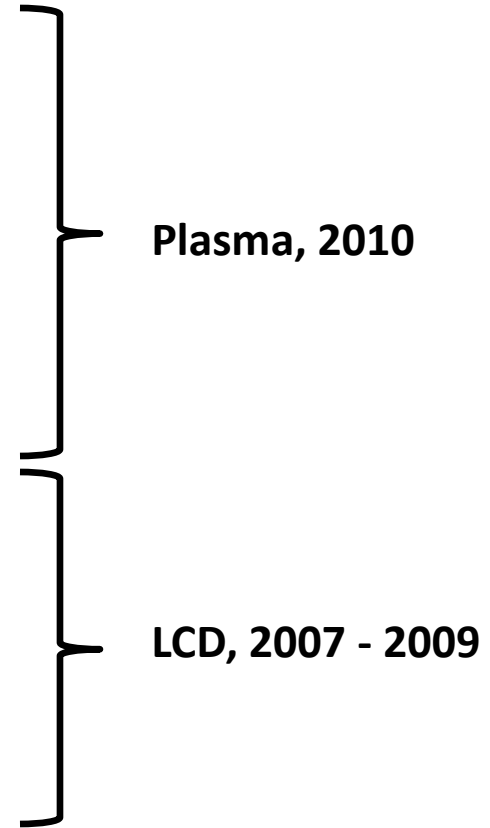
Samsung 58-A
Samsung 58-B



Panasonic 42-A
Panasonic 42-B
Sharp 42



Sharp 32-A
Sharp 32-B
Samsung 32



Plasma, 2010

LCD, 2007 - 2009

Research Questions?

Q1: Do TVs produce **repeatable EMI** given **repeated screen content**?

Q2: For a given TV, does **different screen content** produce **different EMI**?

Q3: Is EMI **consistent** across **TVs from the same model family**?

Q4: Can we use EMI to **determine what is being watched** on TV?

Q5: Can we **match lab EMI** to EMI recorded in **various home settings**?

Research Questions?



Q1: Do TVs produce **repeatable EMI** given **repeated screen content**?



Q2: For a given TV, does **different screen content** produce **different EMI**?



Q3: Is EMI **consistent** across **TVs from the same model family**?



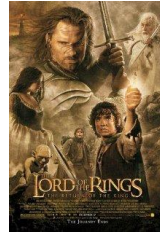
Q4: Can we use EMI to **determine what is being watched** on TV?



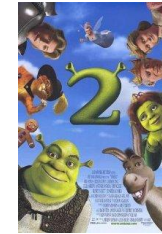
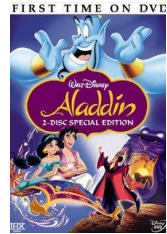
Q5: Can we **match lab EMI** to EMI recorded in **various home settings**?

Screen Content = 20 IMDB Top Grossing Movies

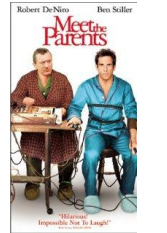
Action



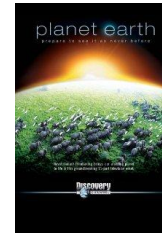
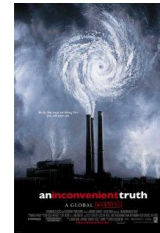
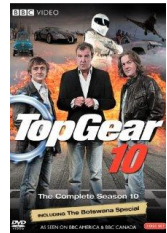
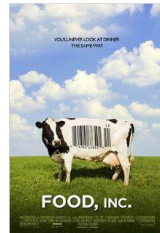
Animation



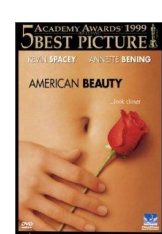
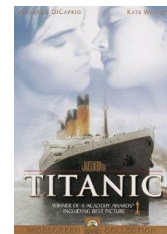
Comedy



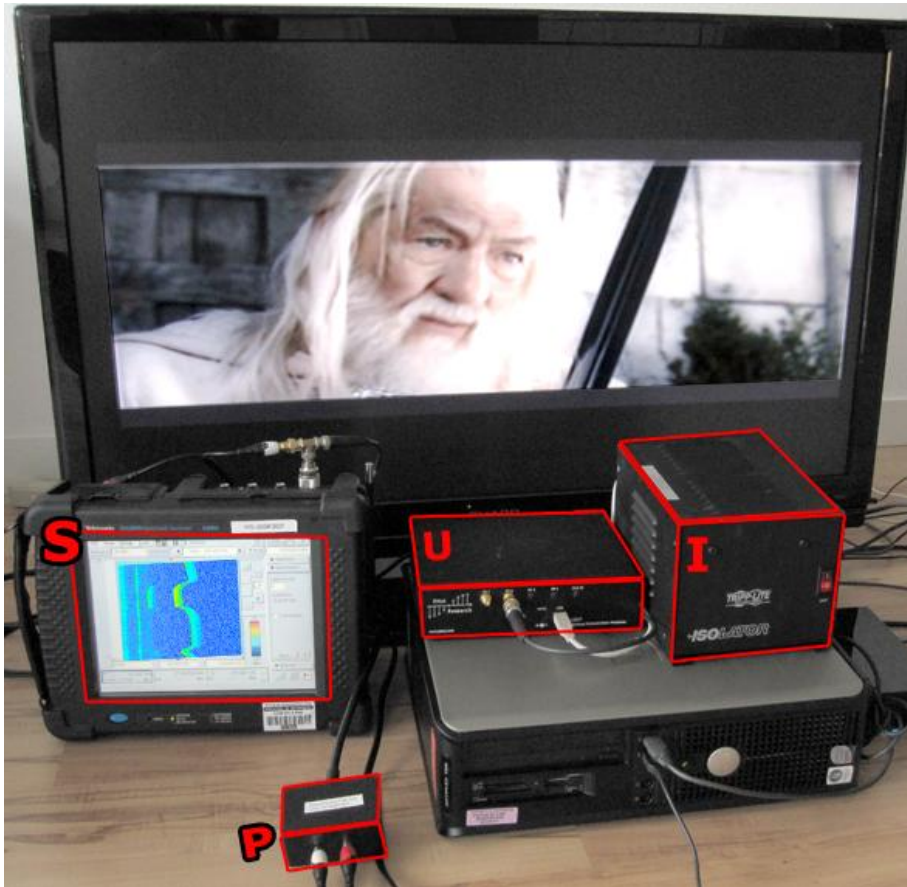
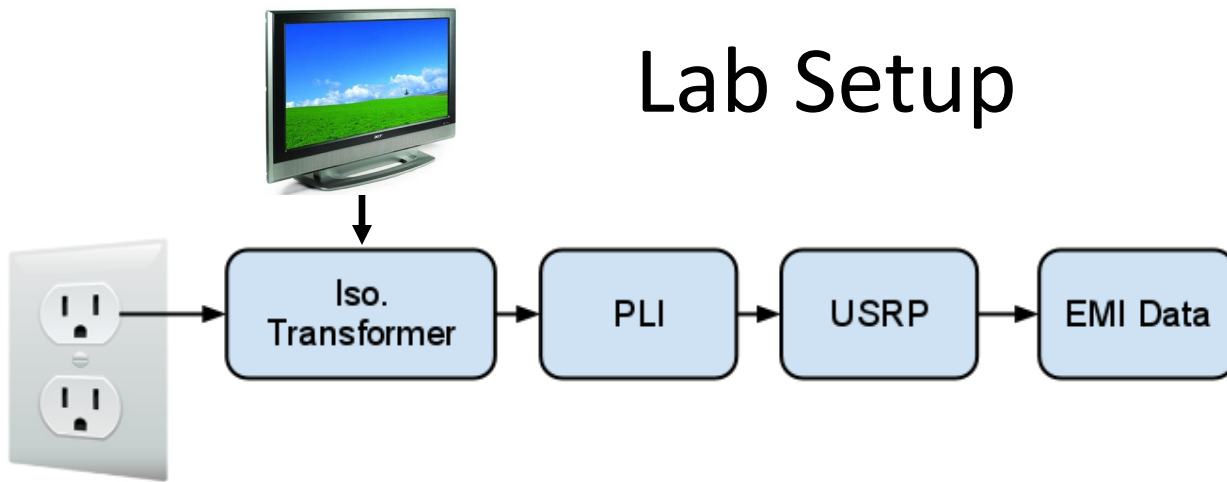
Documentary



Drama

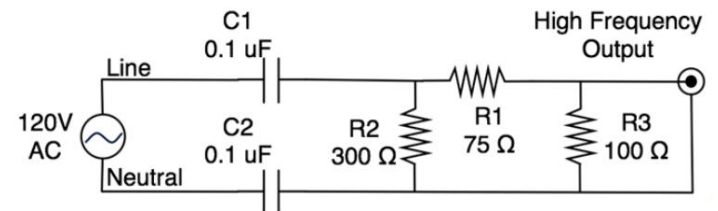


Lab Setup



(I) Isolation transformer
- external EMI filter

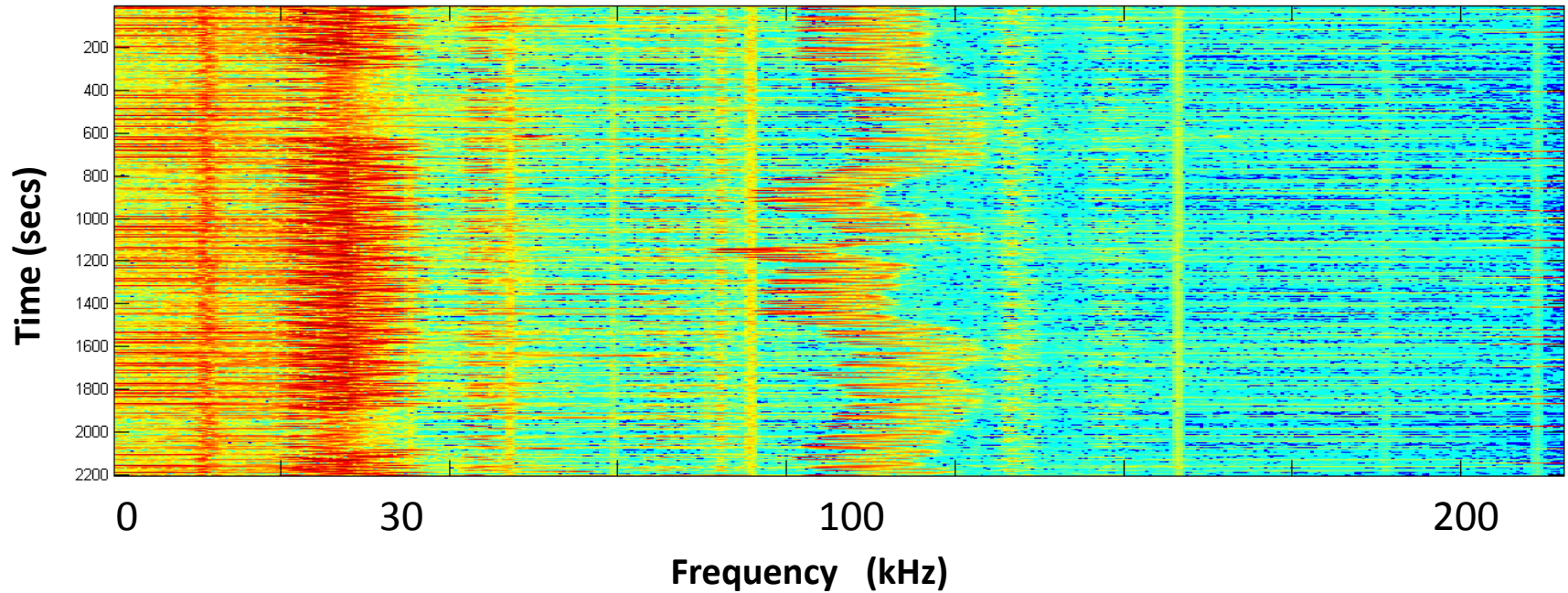
(A) Power Line Interface
- custom voltage sensor



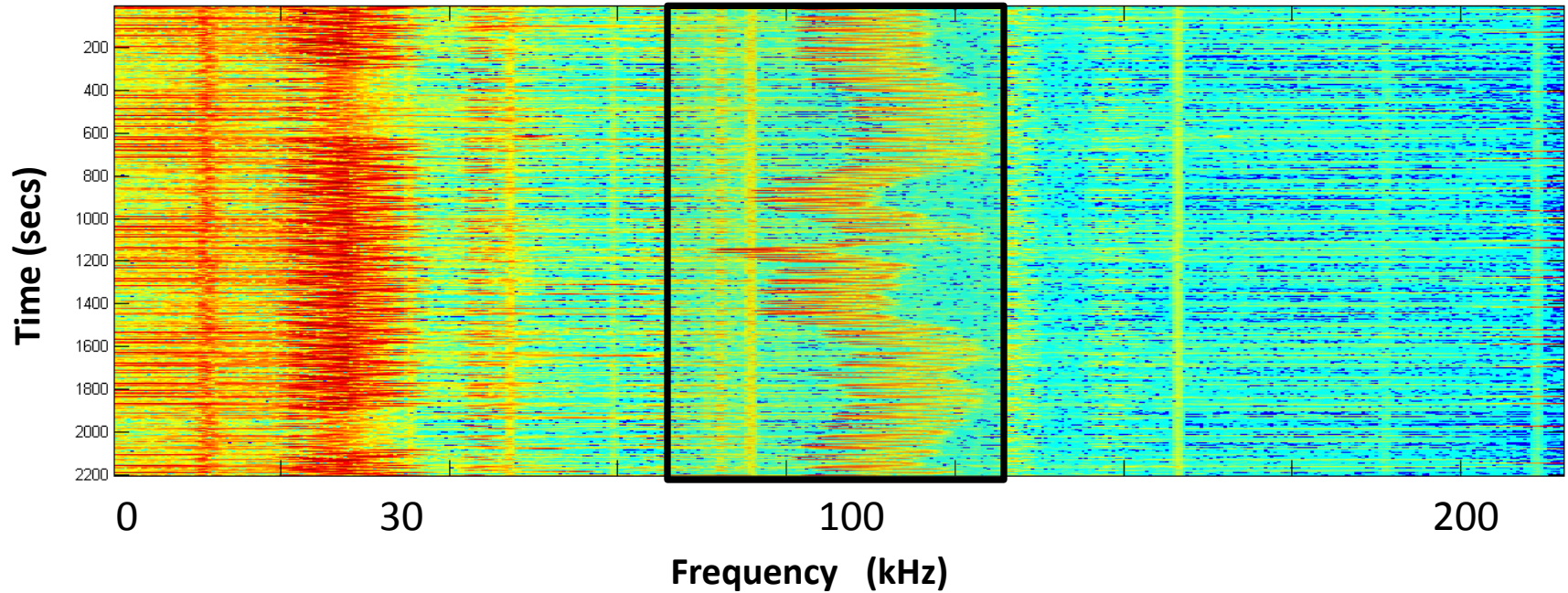
(U) Universal Software Radio Peripheral
- analog to digital convertor

(A) Spectrum analyzer
- visualization & logging

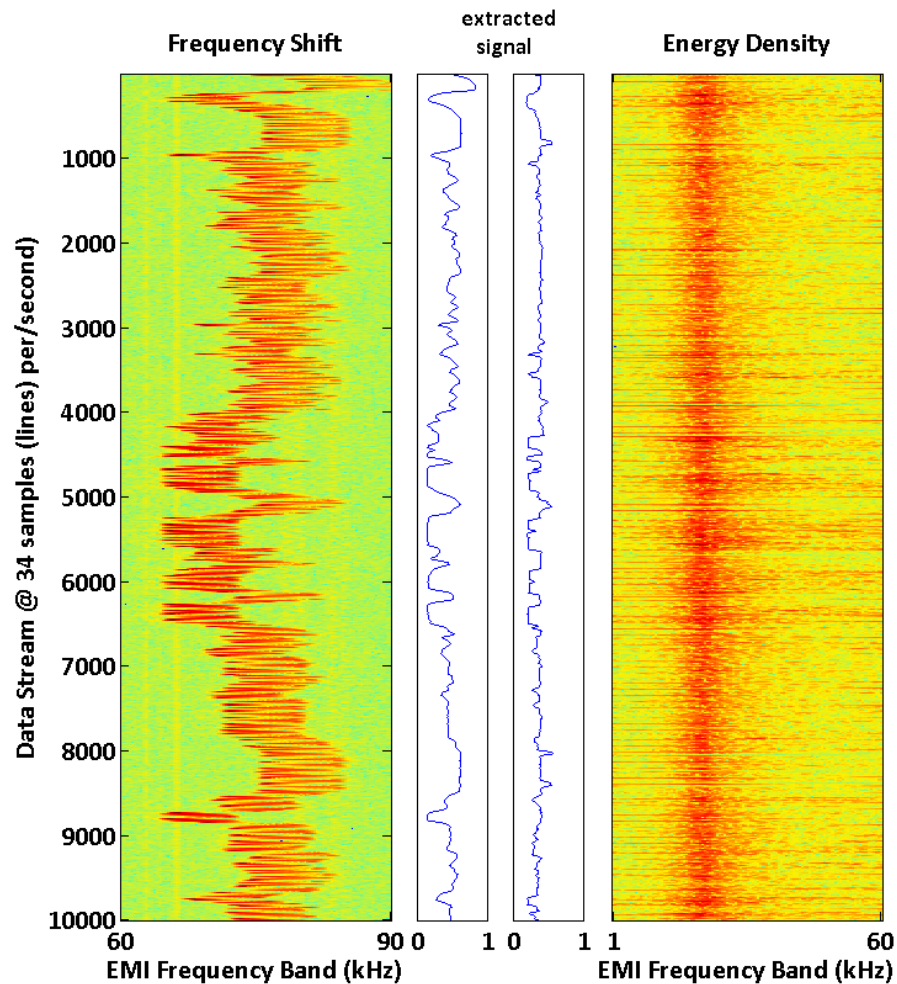
Signal Extraction



Signal Extraction

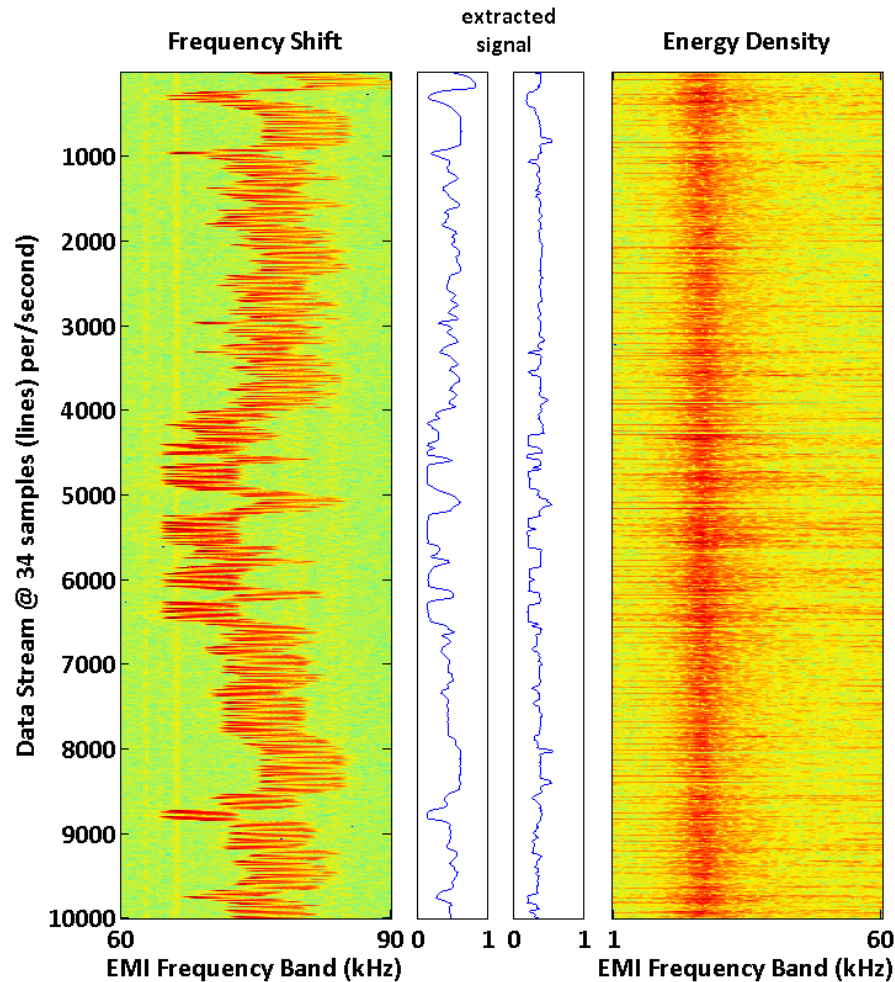


Extracting TV EMI



Television Name	Freq. Range	Signal Type
Panasonic-42-A/B	1 to 60 kHz	Energy Density
Samsung-58-A/B	45 to 55 kHz	Frequency Shift
Samsung-32	10 to 50 kHz	Energy Density
Sharp-42	60 to 90 kHz	Frequency Shift
Sharp-32-A/B	35 to 40 kHz	Energy Density

Extracting TV EMI



Television Name	Freq. Range	Signal Type
Panasonic-42-A/B	1 to 60 kHz	Energy Density
Samsung-58-A/B	45 to 55 kHz	Frequency Shift
Samsung-32	10 to 50 kHz	Energy Density
Sharp-42	60 to 90 kHz	Frequency Shift
Sharp-32-A/B	35 to 40 kHz	Energy Density

Research Questions?



Q1: Do TVs produce **repeatable EMI** given **repeated screen content**?



Q2: For a given TV, does **different screen content** produce **different EMI**?



Q3: Is EMI **consistent** across **TVs from the same model family**?

Q4:

Can we use EMI to determine **what is being watched** on a TV?



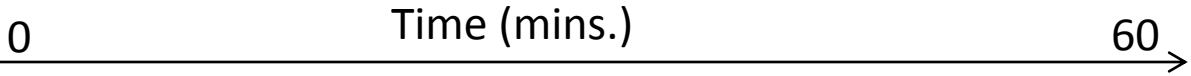
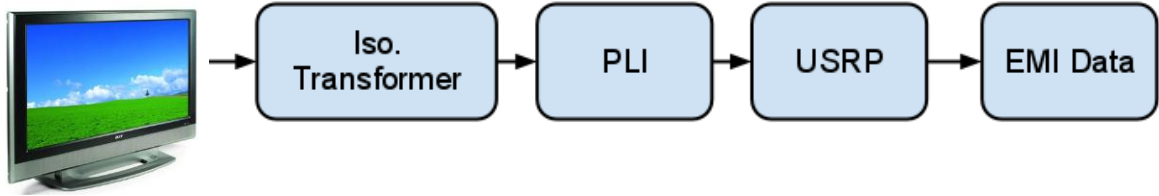
Q4:

Can we use EMI to determine **what is being watched** on a TV?

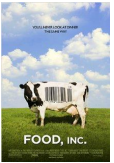
Approach: Match EMI to a DB



Building an EMI Database



EMI



•
•
•

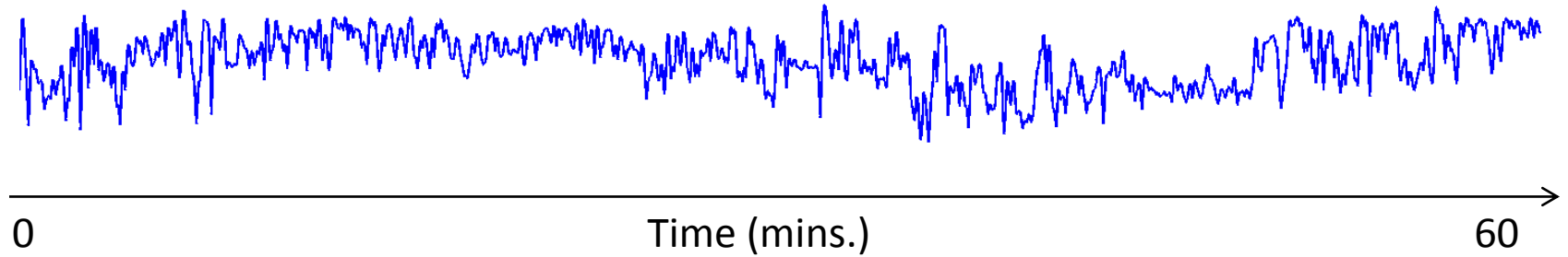
•
•
•



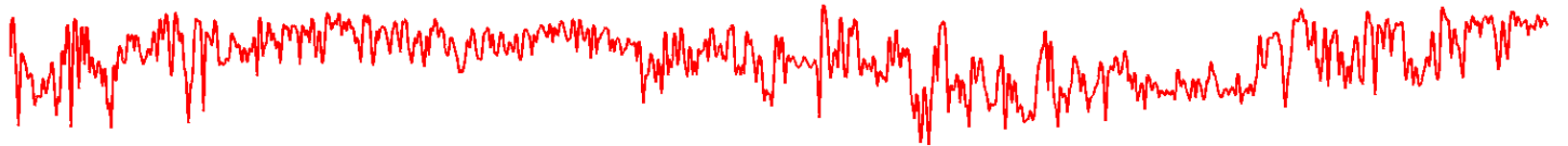
Multiple Runs

Multiple TVs
Same Content

Pan42A



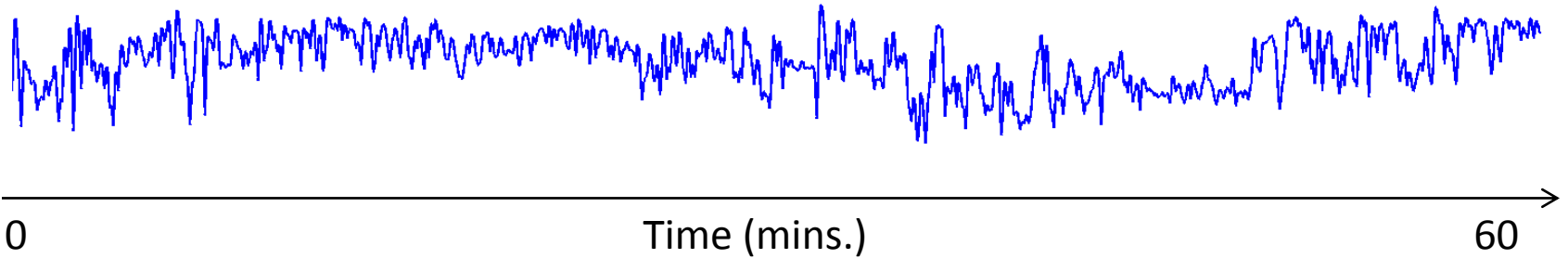
Pan42B



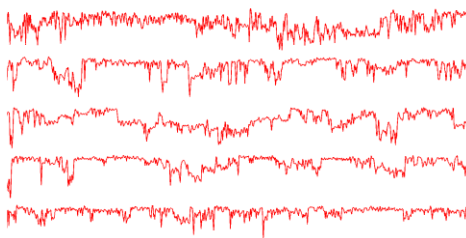
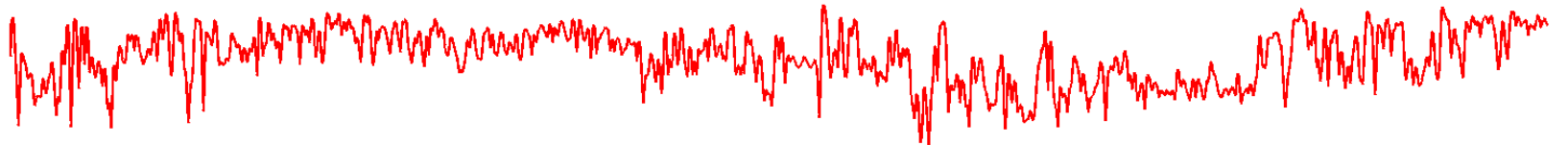
Multiple Runs

Multiple TVs
Same Content

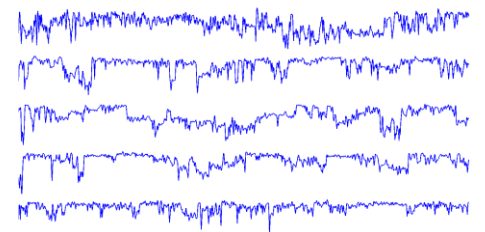
Pan42A



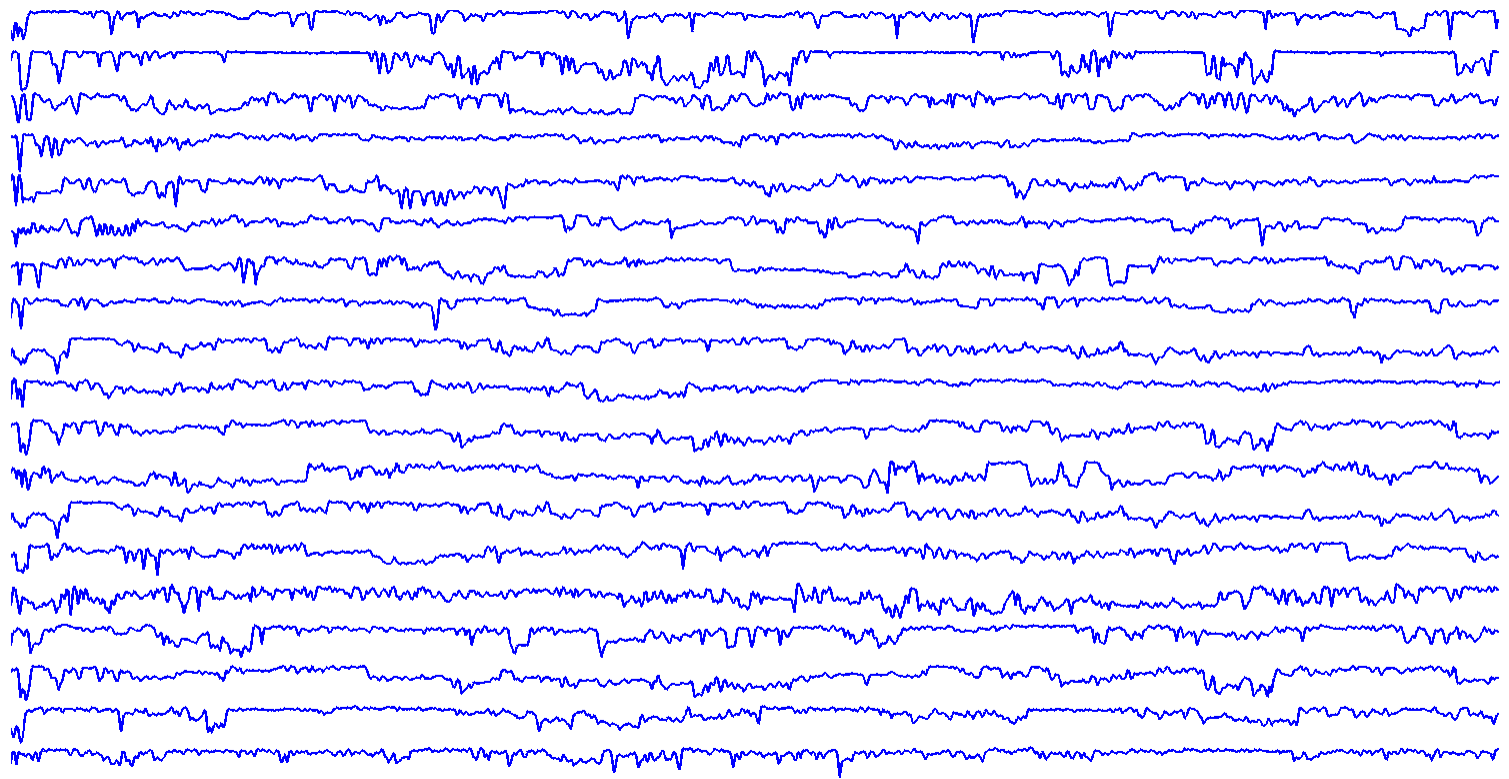
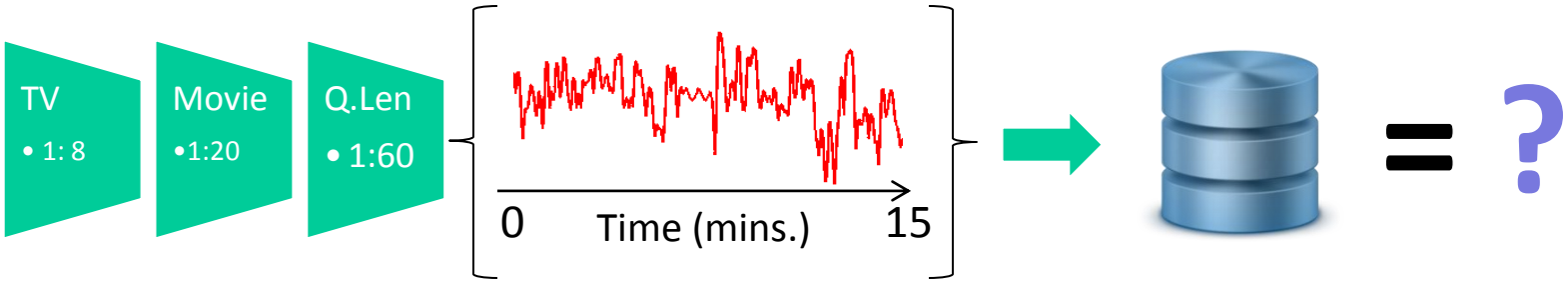
Pan42B



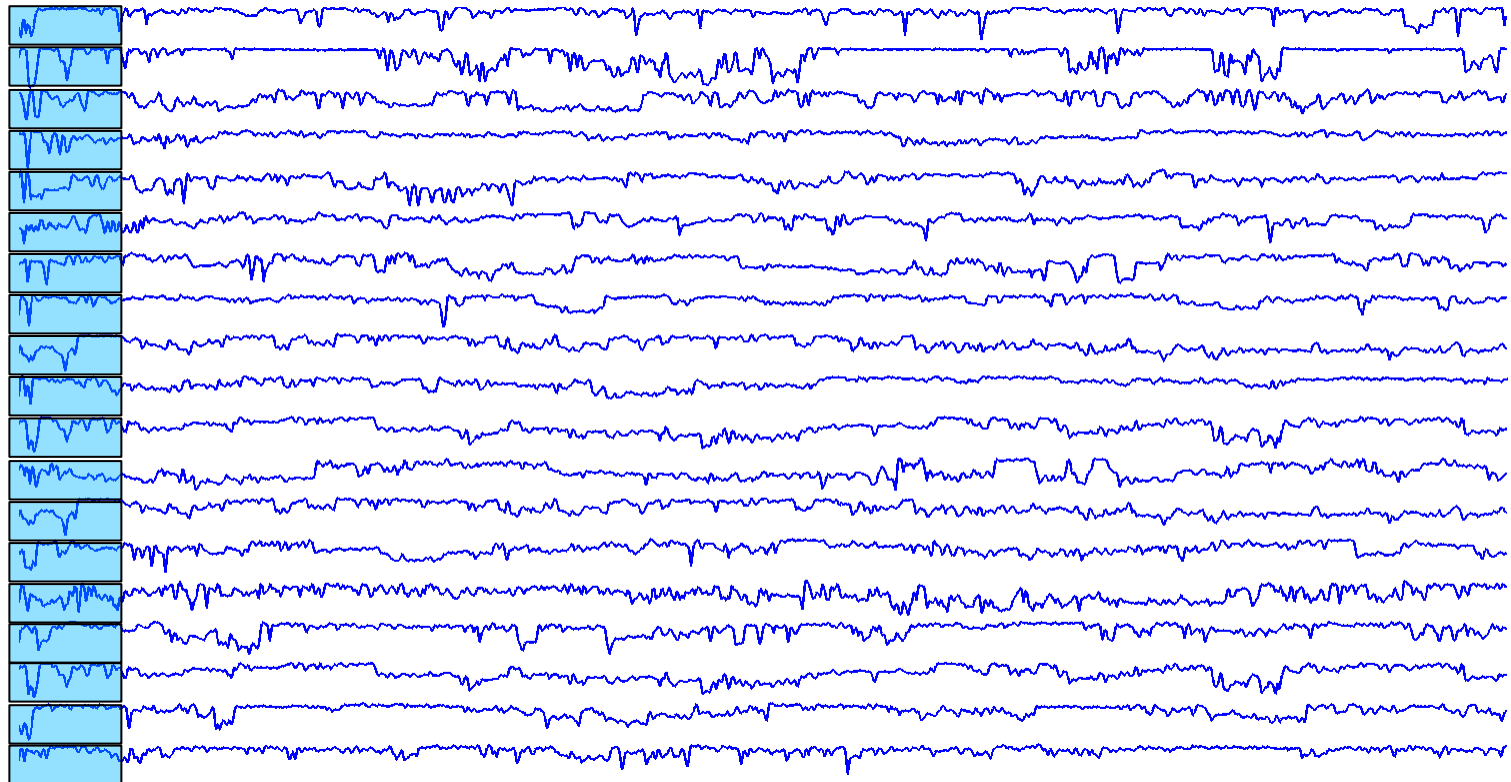
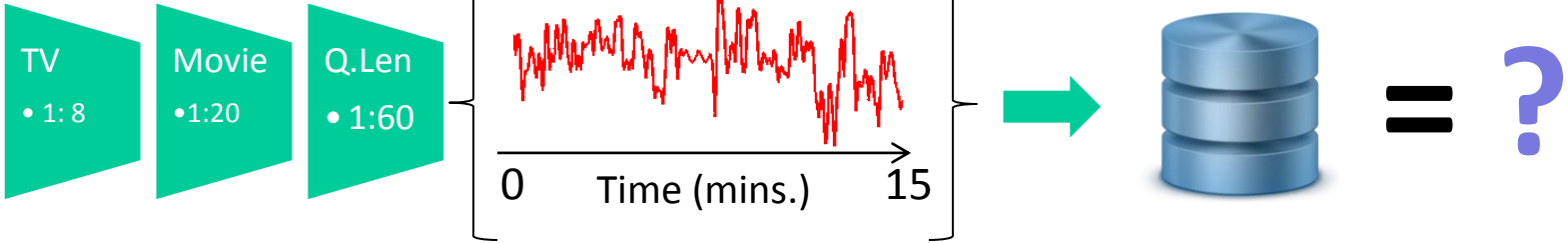
Query vs **DB**



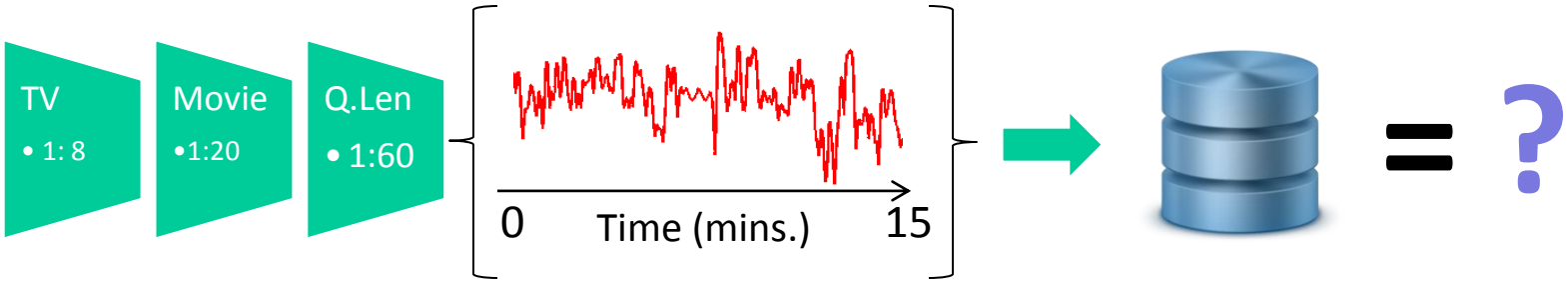
Query vs DB



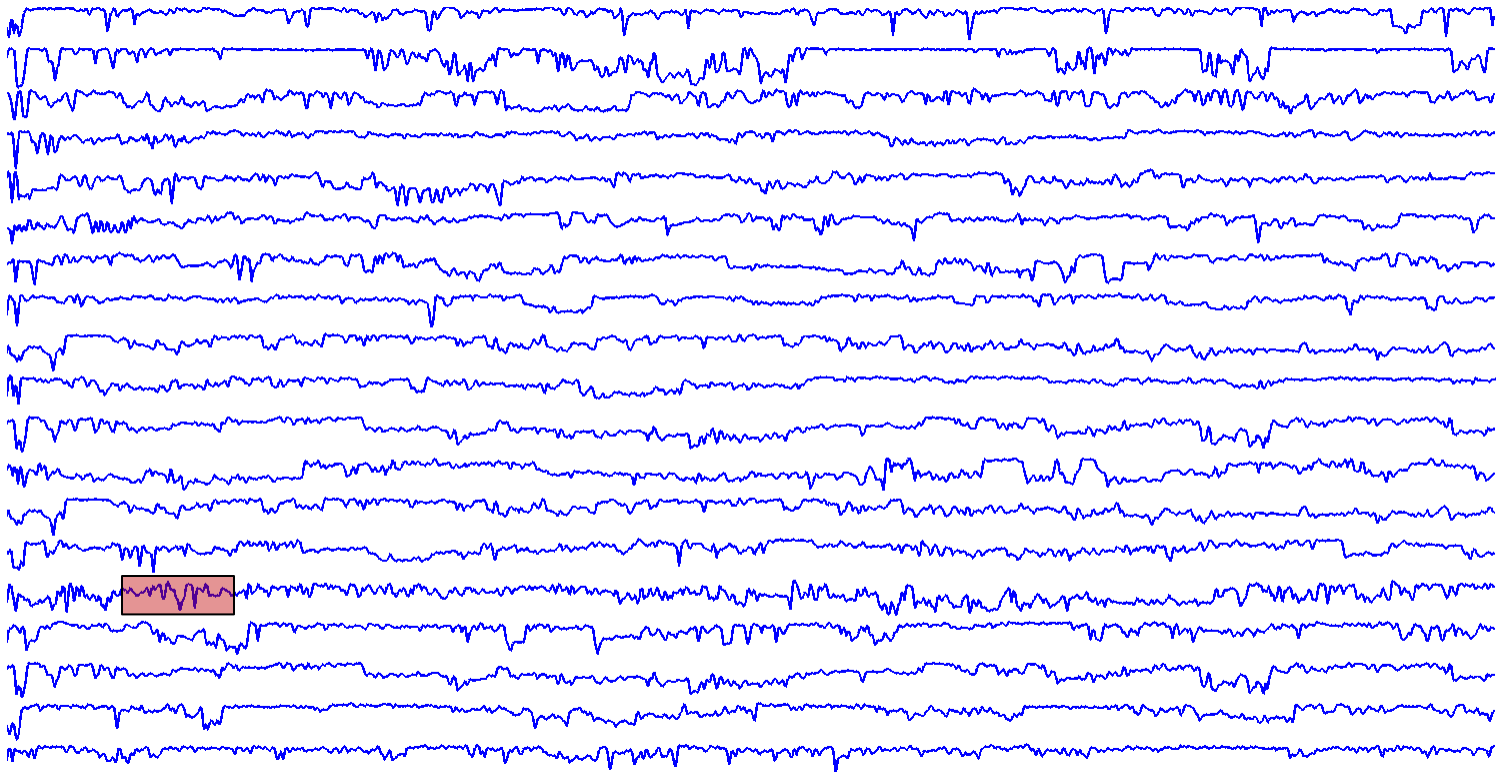
Query vs DB



Query vs DB



Best
match



Possible Query Results

- **Hit:** the search engine is confident* in the match (accept) and the match was the movie from which the query itself was extracted. (Success.)
- **Miss:** the search engine is confident* in the match (accept) but there is a mismatch between the search engine's best guess and the query origin. (Failure.)
- **Reject:** the best match was a not a clear winner*, and the matching algorithm chooses not to respond. (Neither success nor failure.)

* Confidence is the gap size between the top match and the runner up

Query Length & Confidence

Confidence is the gap size between the top match and the runner up

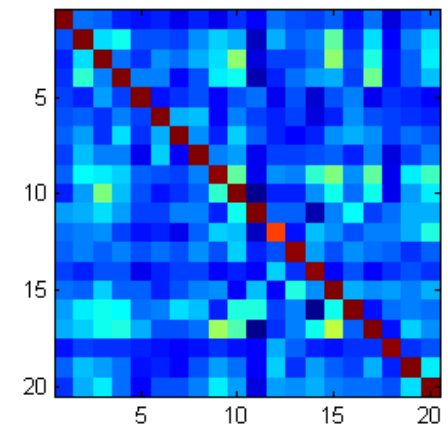
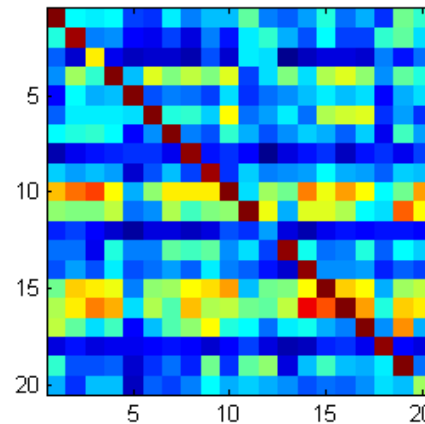
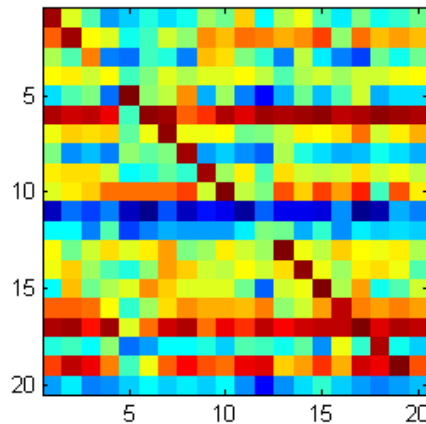
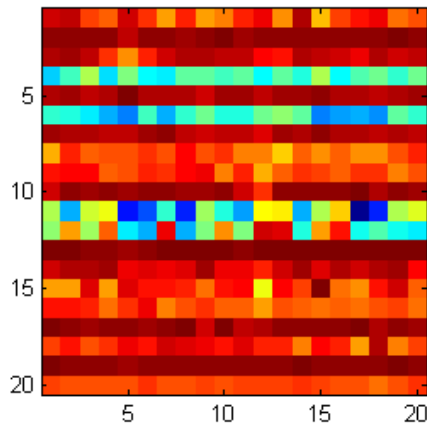
Query Length

1 min

6 min

12 min

15 min



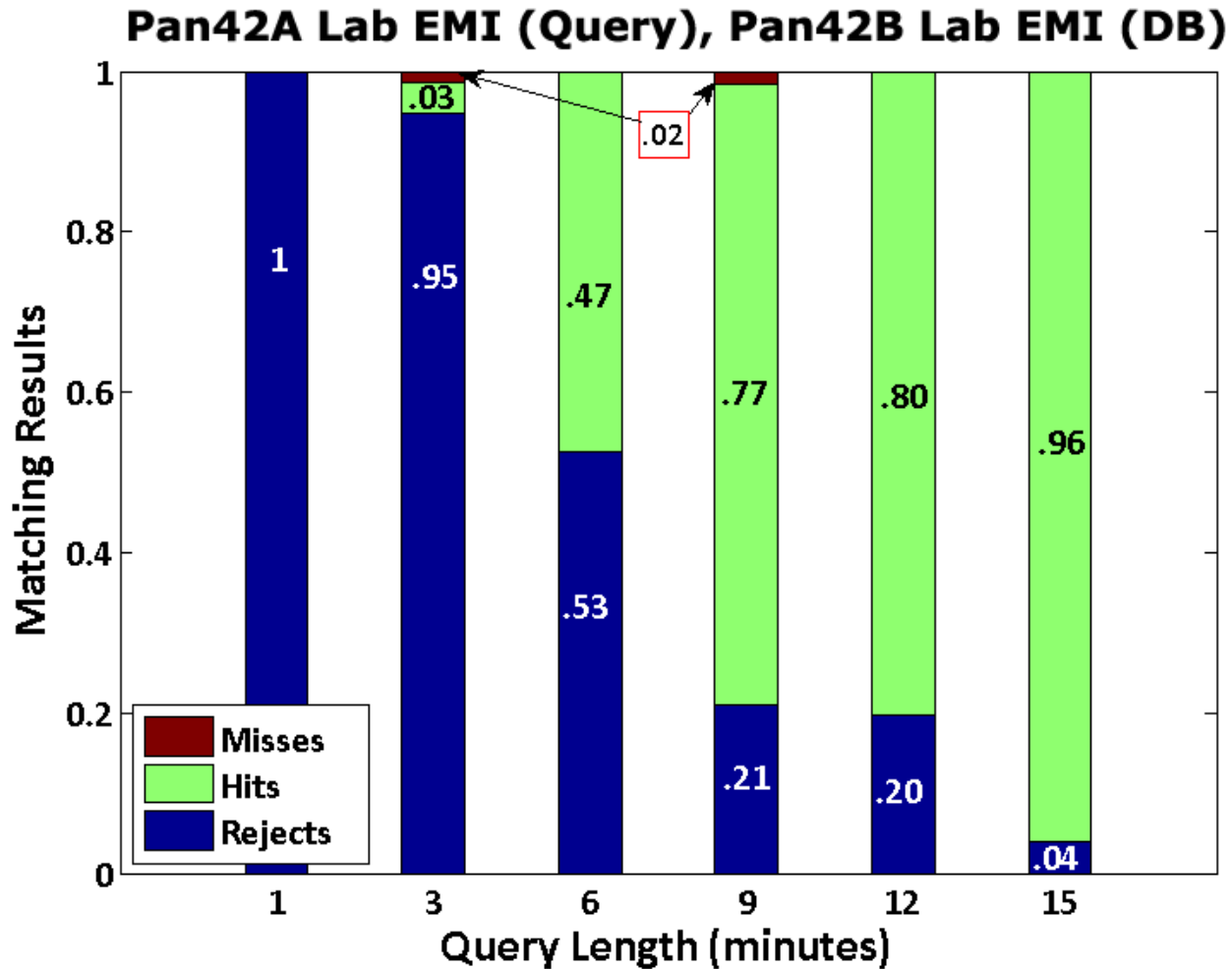
Reject

Reject

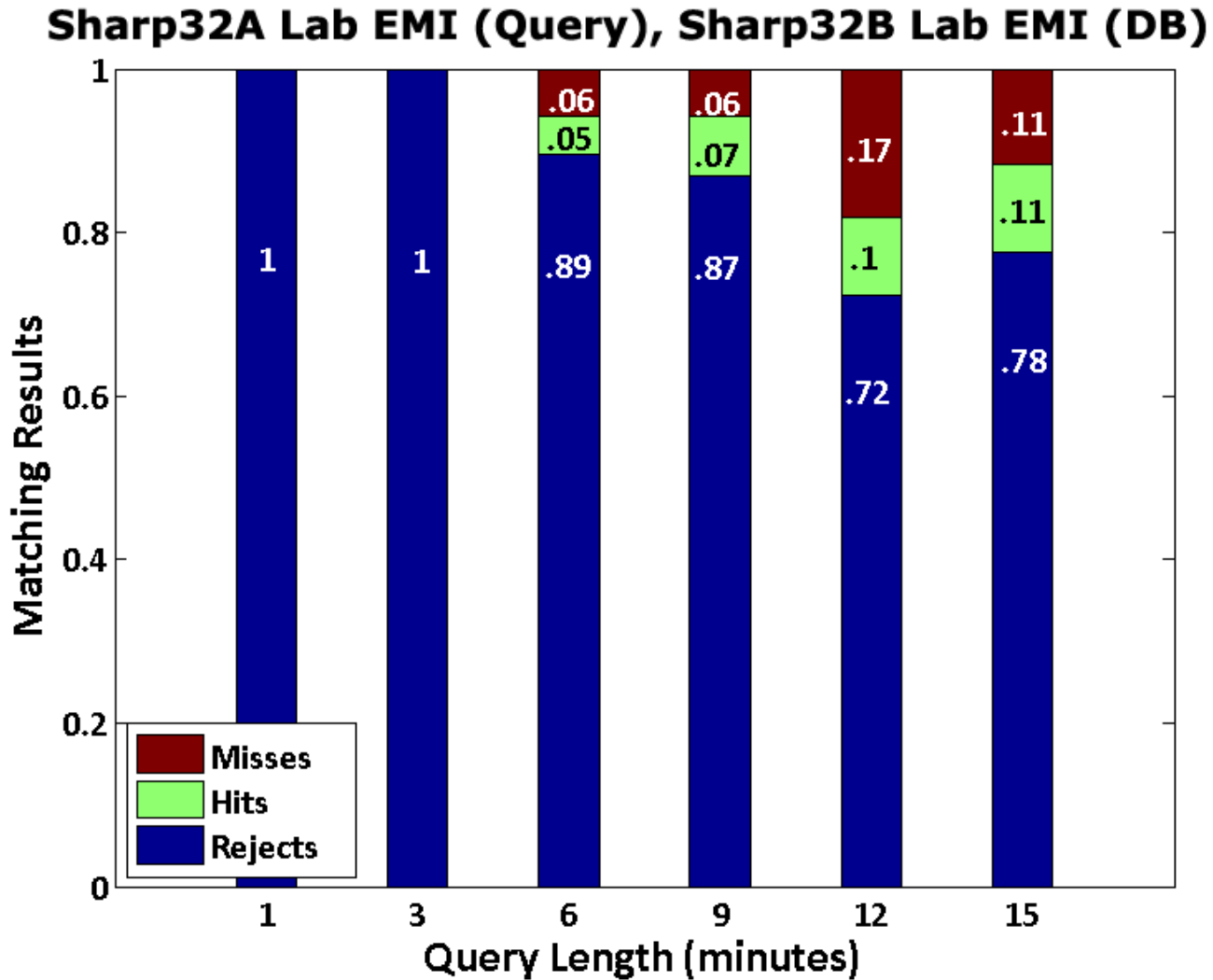
Reject

Reject

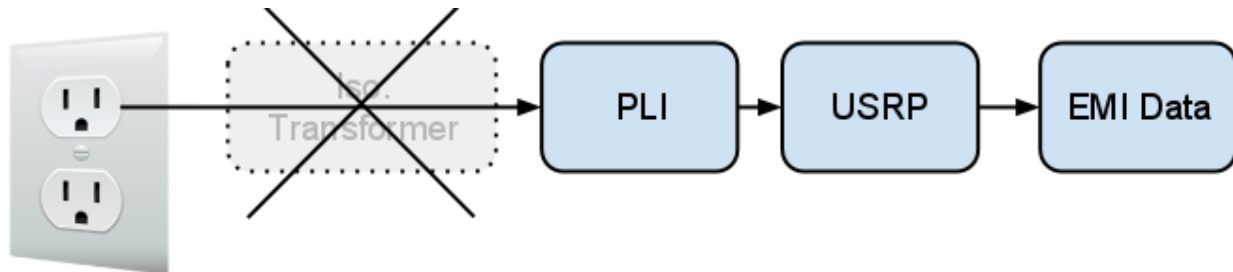
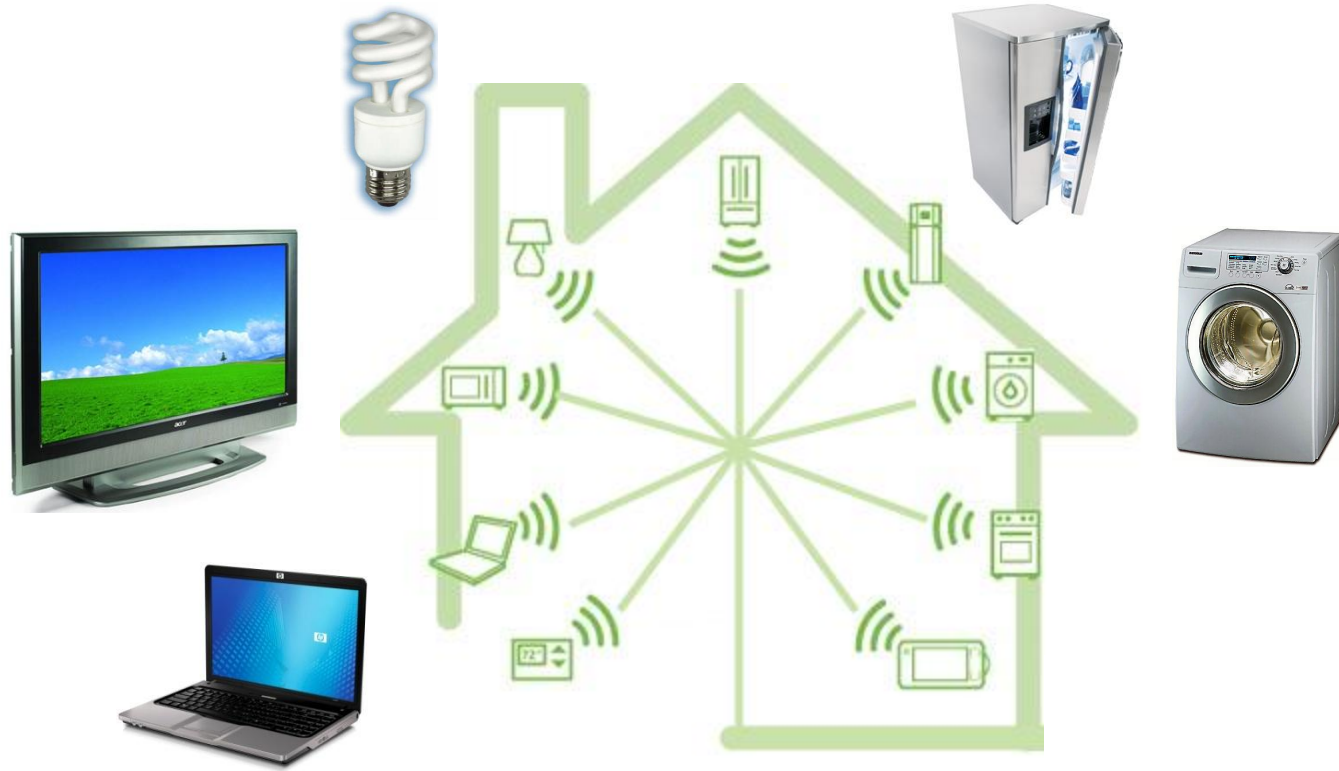
Q4: Can we determine what is being watched from EMI?



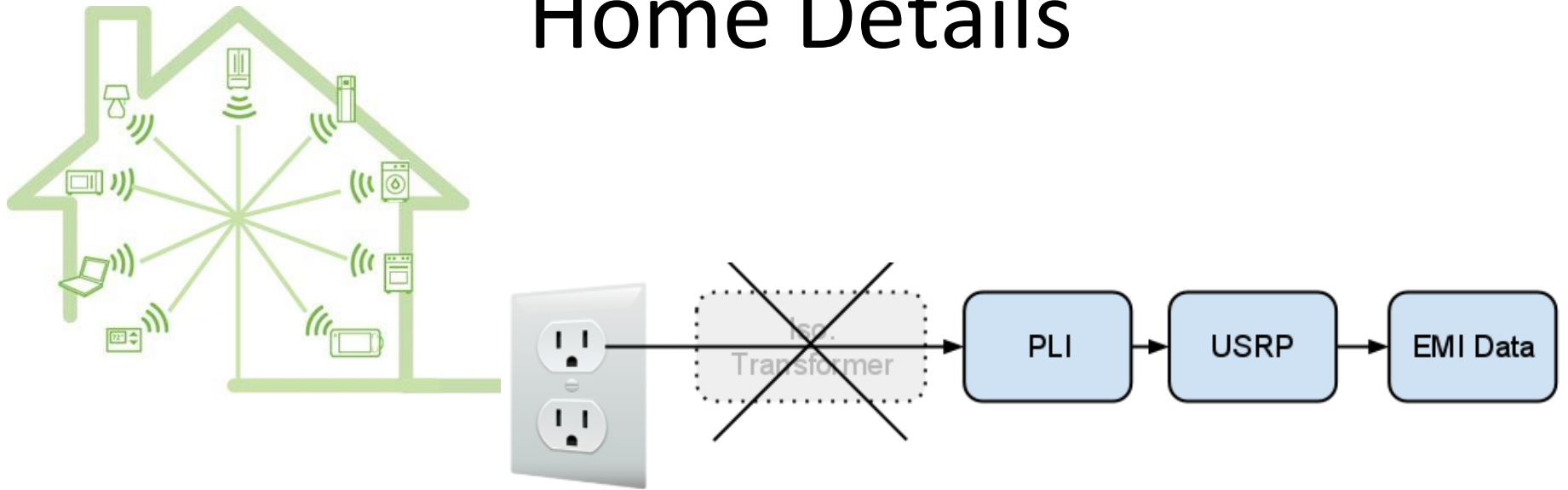
Q4: Can we determine what is being watched from EMI?



Q5: Can we match lab EMI to home EMI?

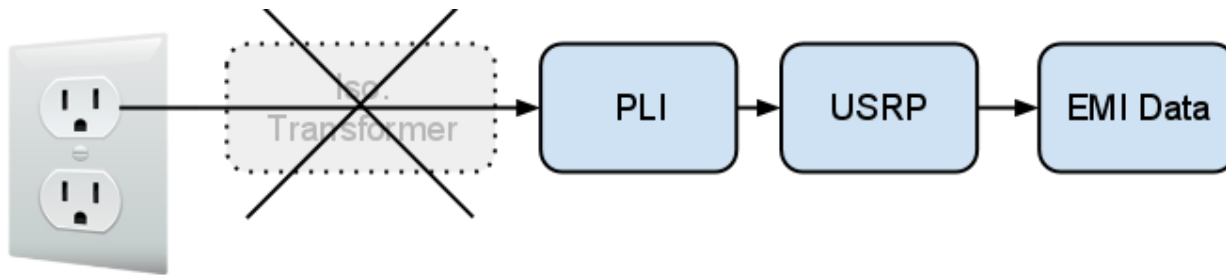


Home Details

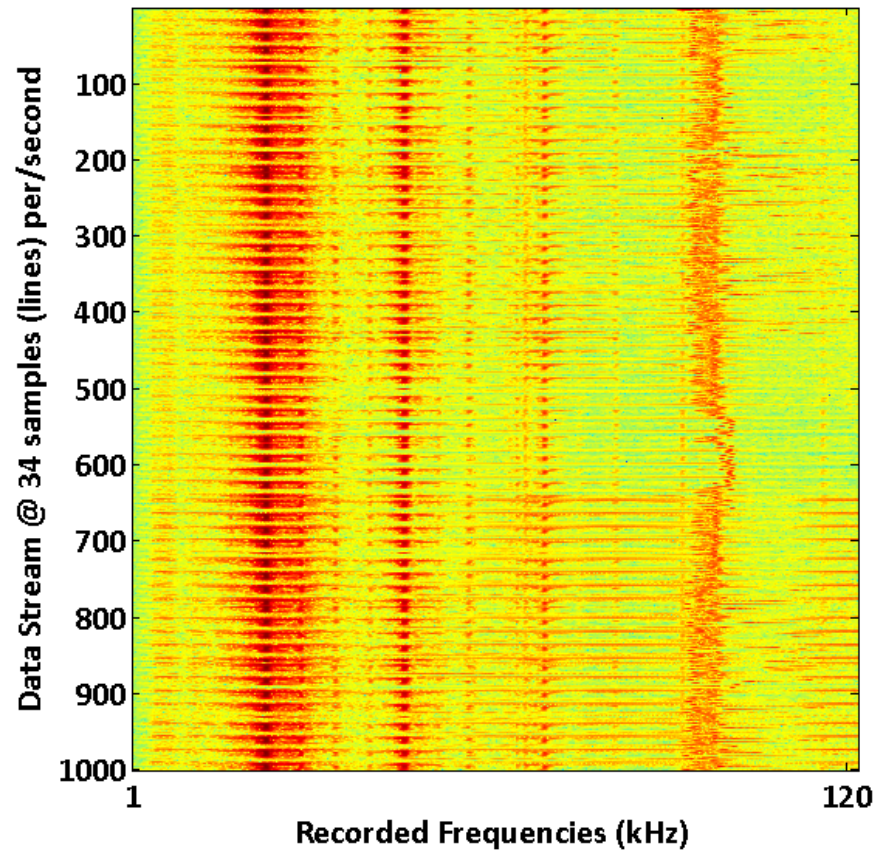


Style	Year Built	Size
Single family Home	2003	3000 sq. ft
Apartment	2009	657 sq. ft.
Multi-family Home	1906	800 sq. ft.

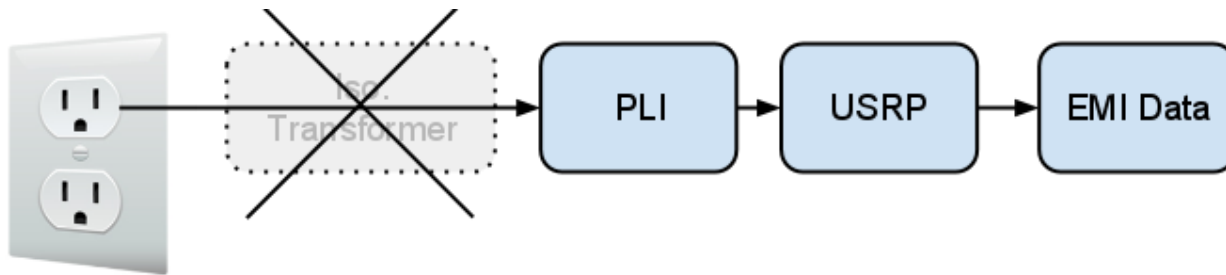
Home Setup



Home EMI

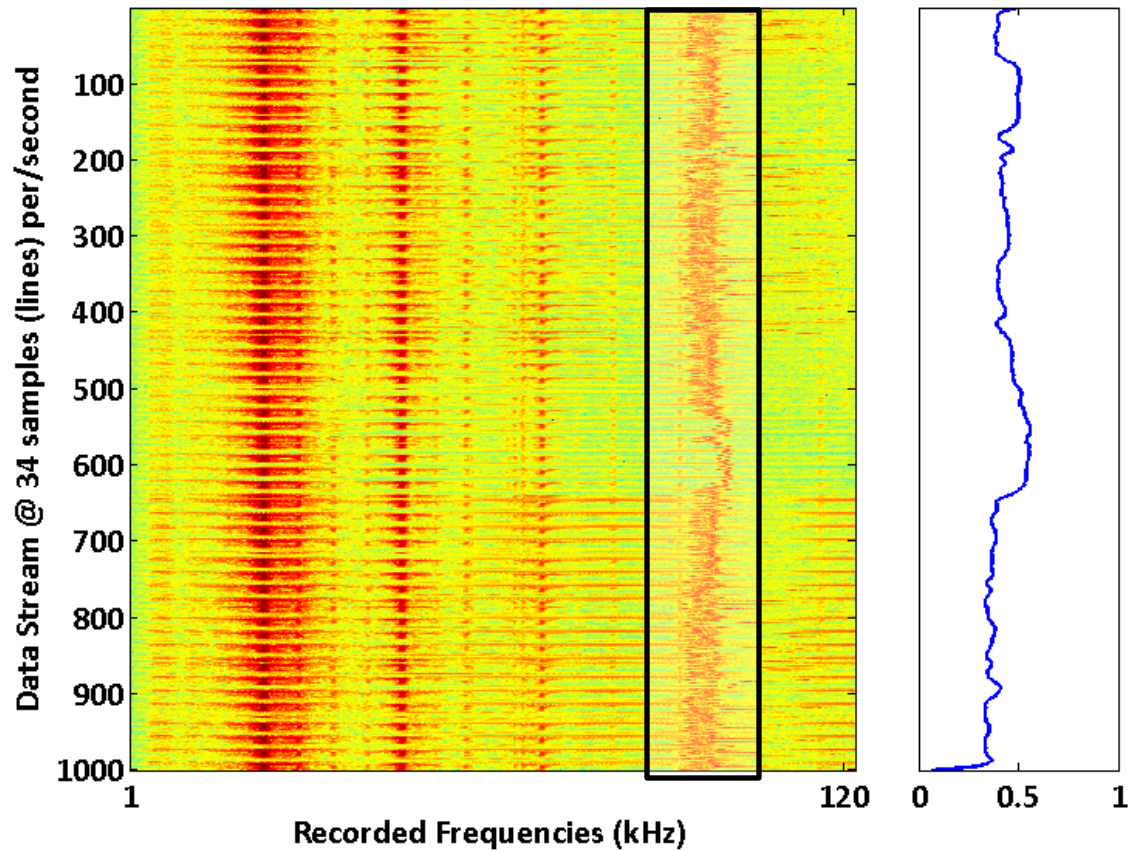


Home Setup

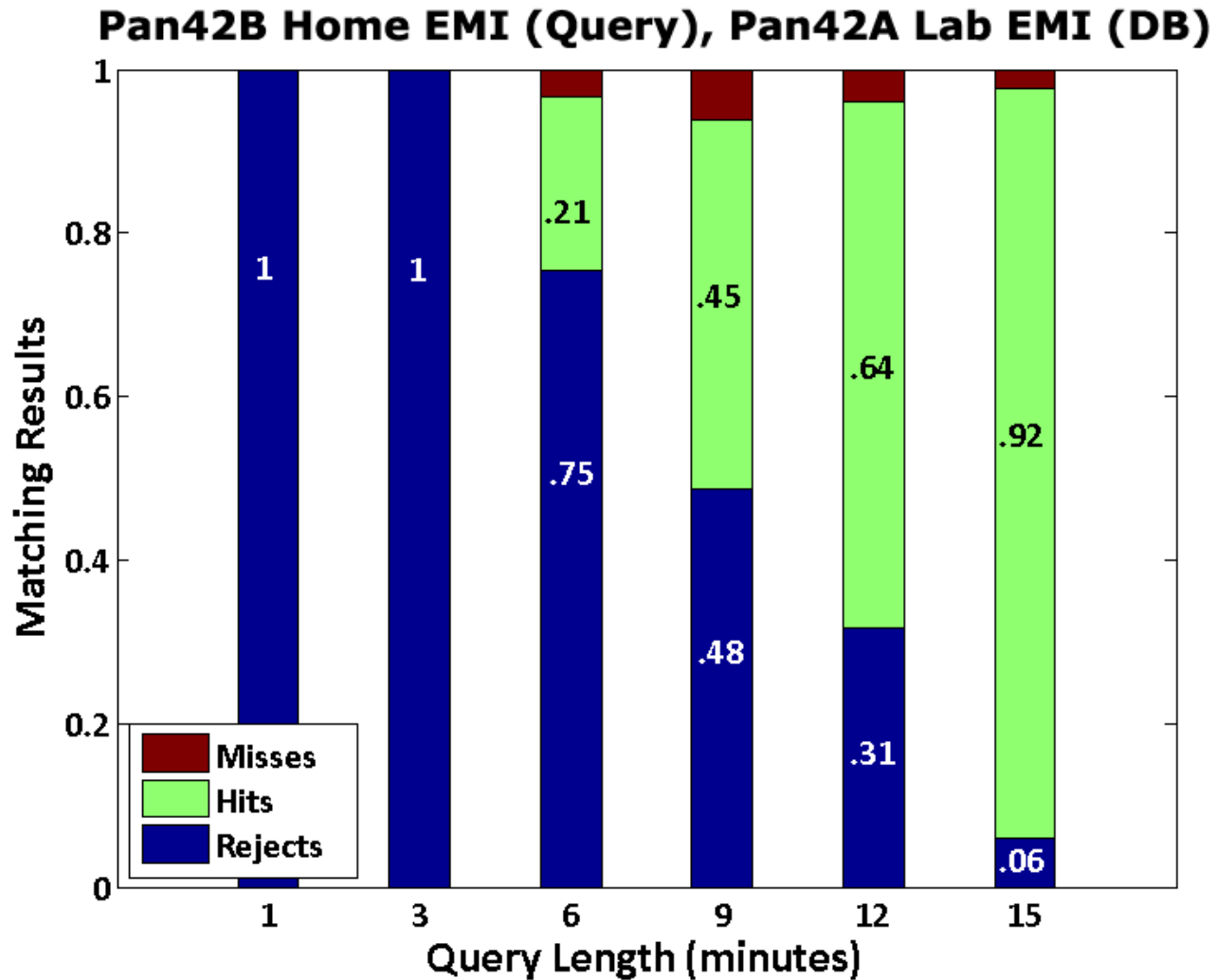


Home EMI

extracted signal



Q5: Can we match lab EMI to EMI recorded in home settings



Extensions:

Can we **predict** EMI from screen content
without a TV?



Predicting EMI



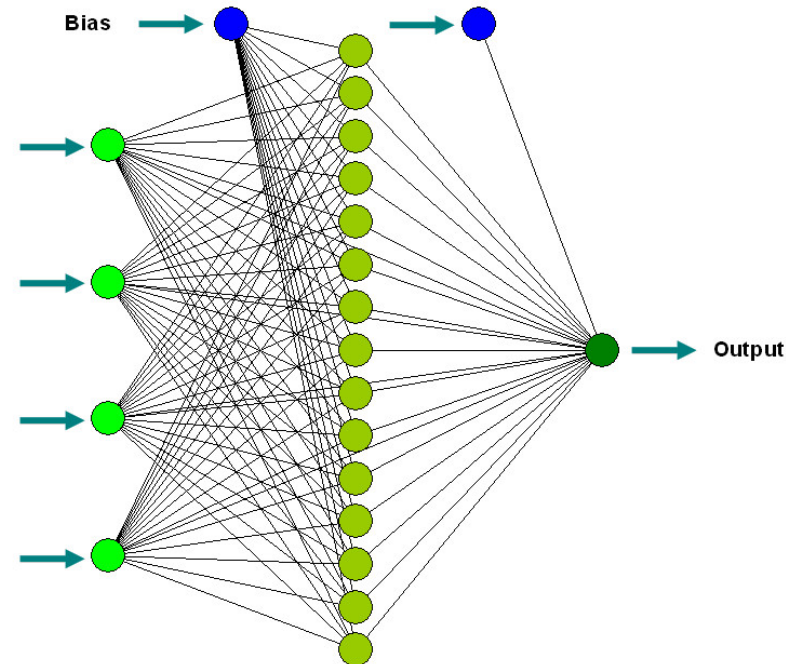
Input Features:

- **Brightness:** cumulative sum of averaged RGB intensities
- **Flux:** change in brightness between consecutive frames
- **Edge Intensity:** pixelsum of a Canny Edge filter
- **FFT:** slope of the best fit line to an FFT
- **Color:** mean and standard deviation for Gaussians fitted to R, G, and B color histograms
- **Bitrate:** kbits/second computed using FFMPEG

Cross Validation:

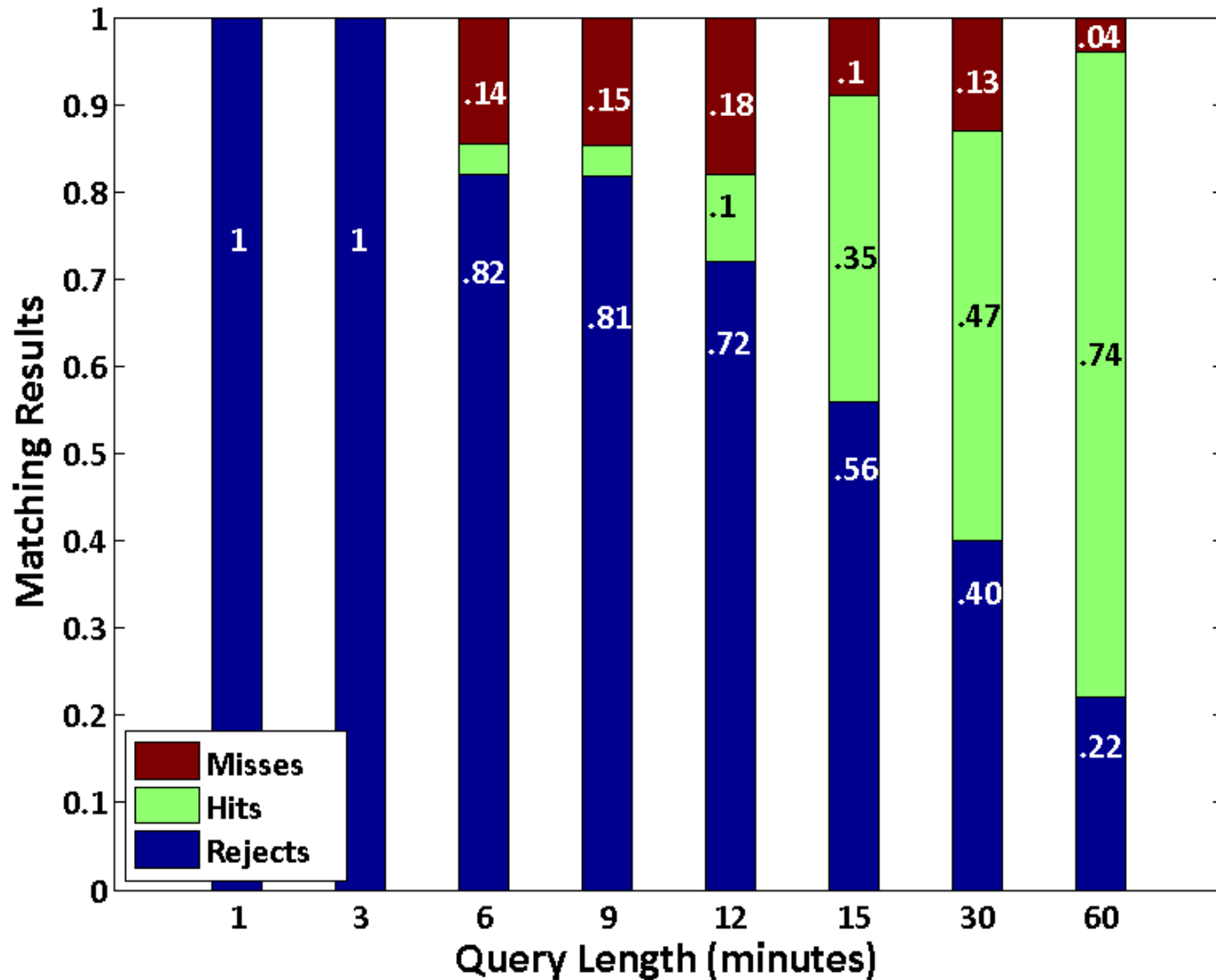
10 Train, 5 Test

Model: Neural Net

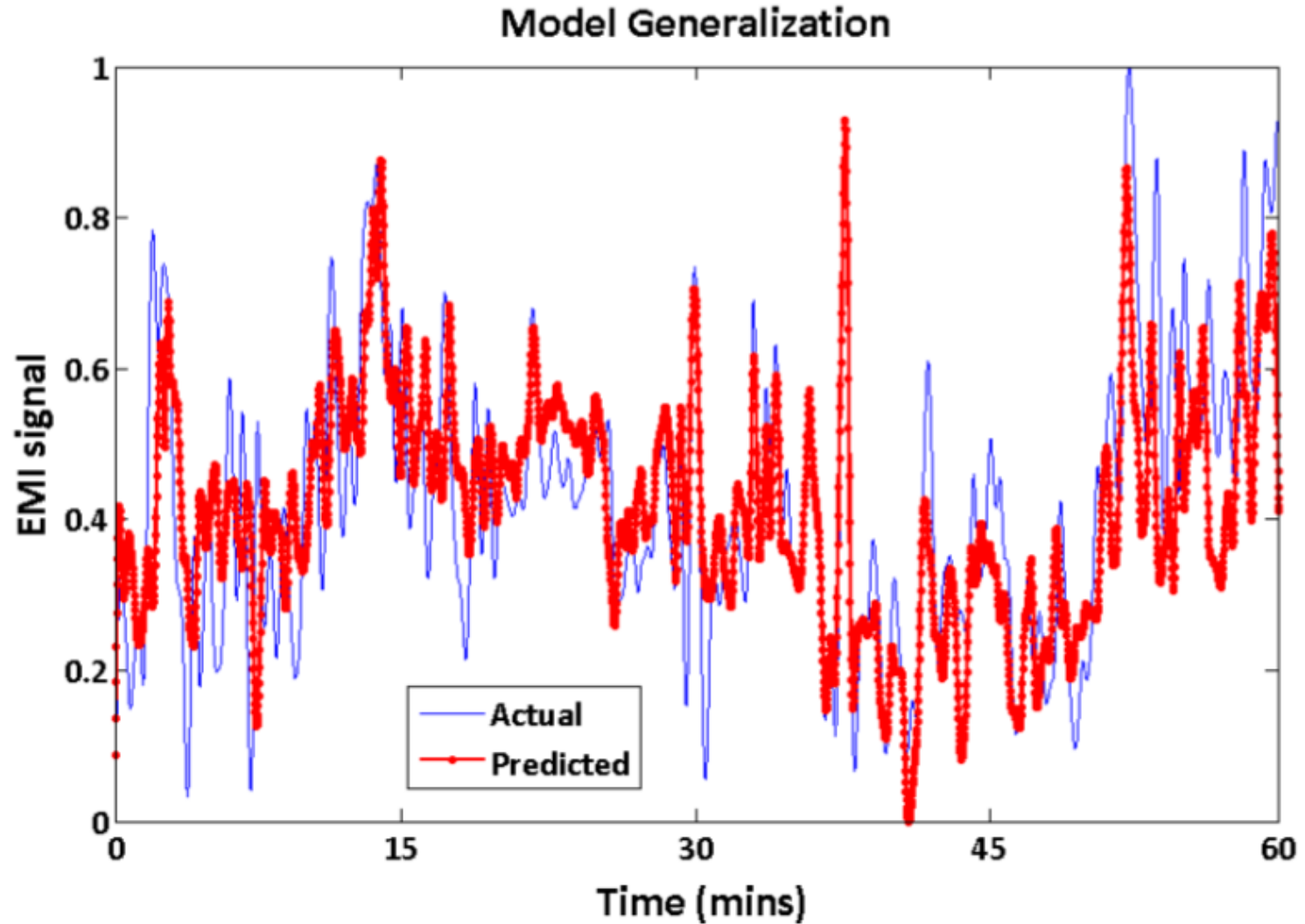


Predicting EMI

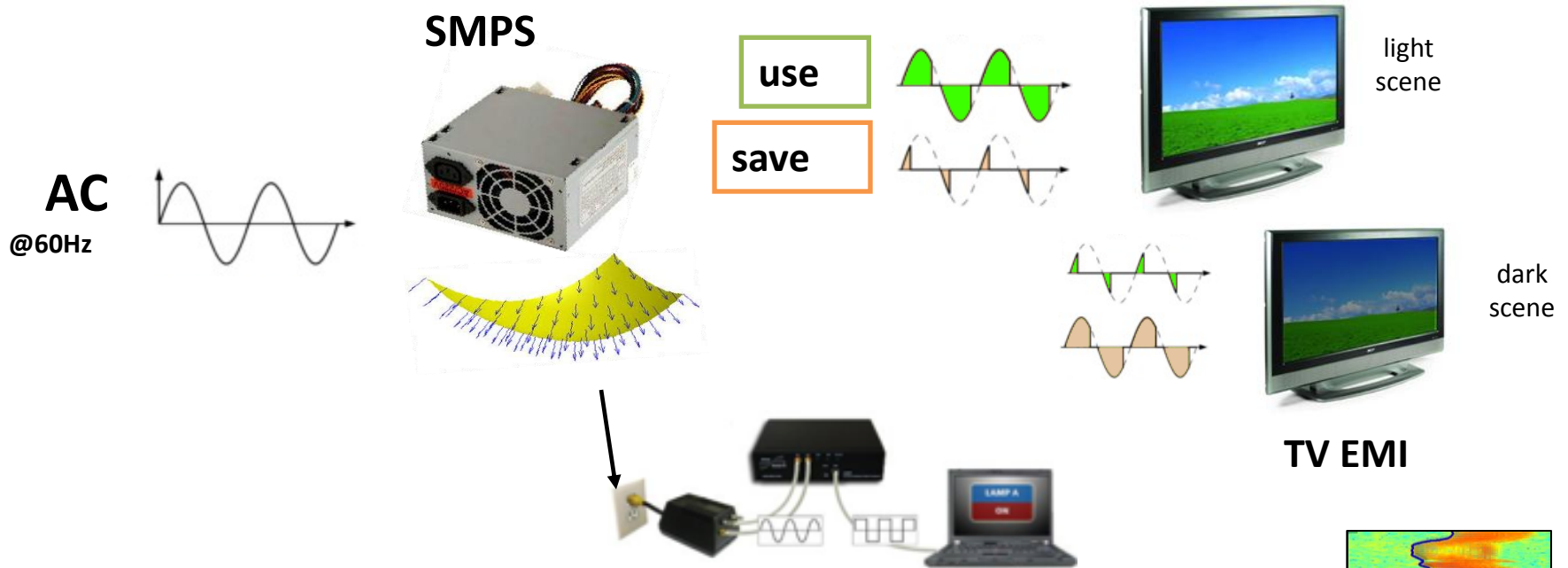
Pan-42A EMI (Query), Neural Net EMI (DB)



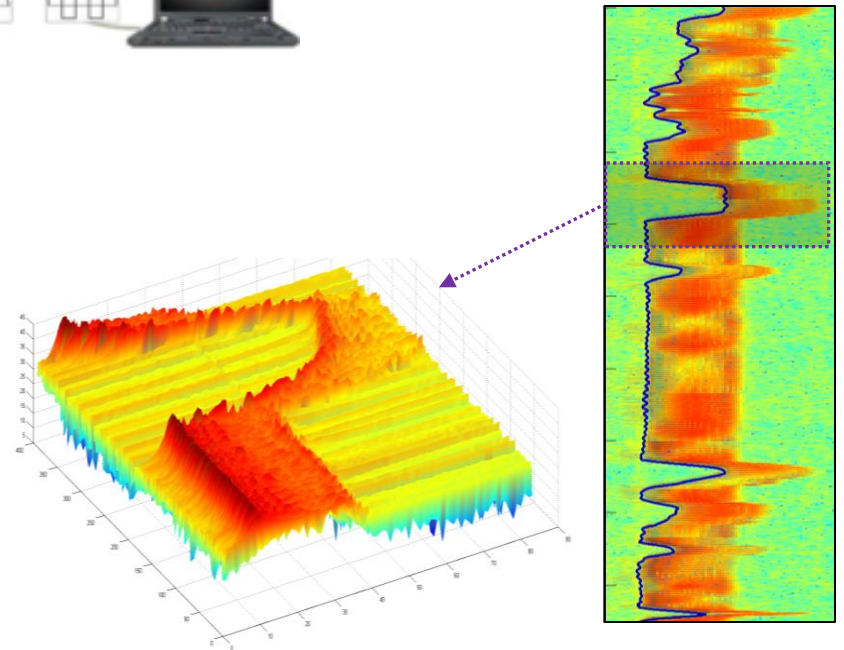
Predicting EMI



TV EMI: Theory of Operation

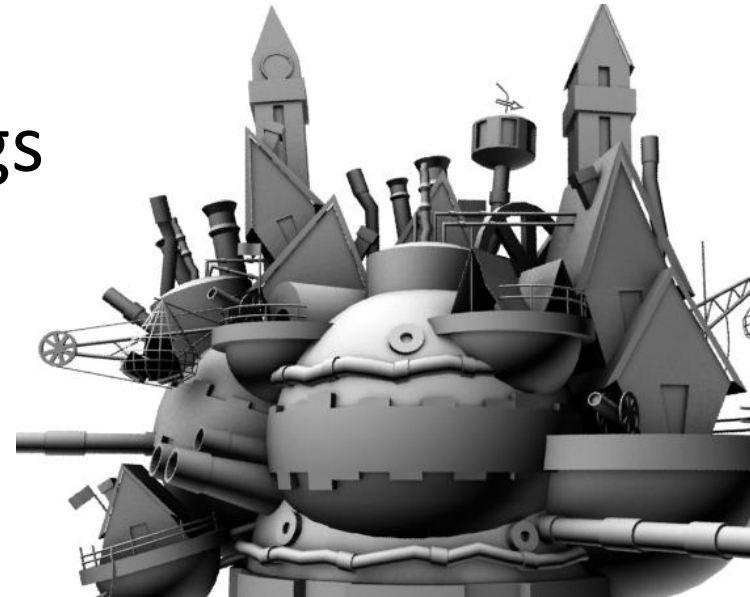


Backlight (brightness)
is key source of TV EMI



Defenses and Tensions

- > Better filtering by power supplies
- > Signal Injection & Jamming (Energy Star)
- > Battery Masking [Mclaughlin 2011]
- > Infrequent sensor readings

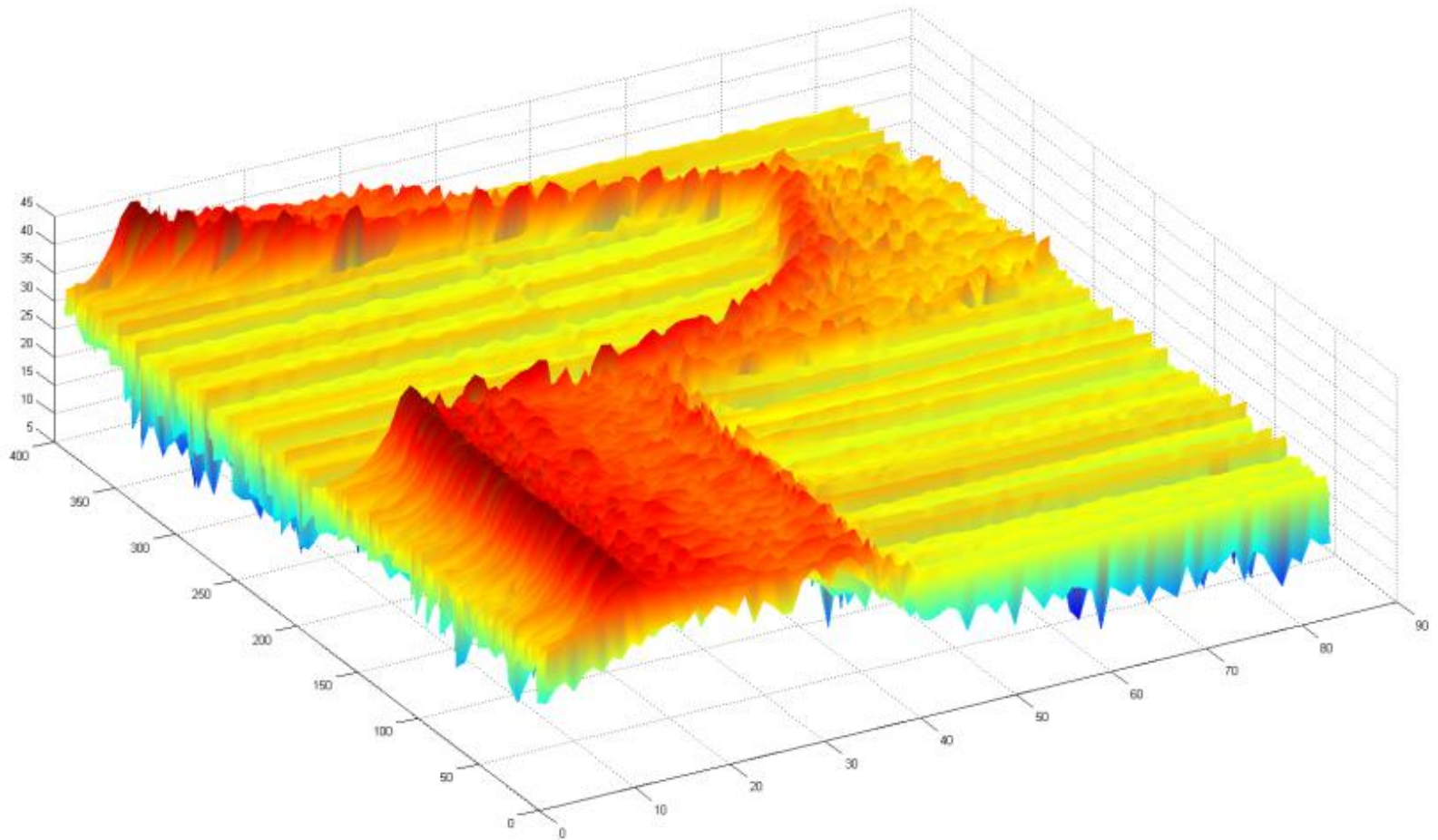


Takeaways

- > Devices **produce EMI** on the powerline
- > **Single sensor** tracks many devices
- > EMI can be **modeled**
- > Growing attack surface

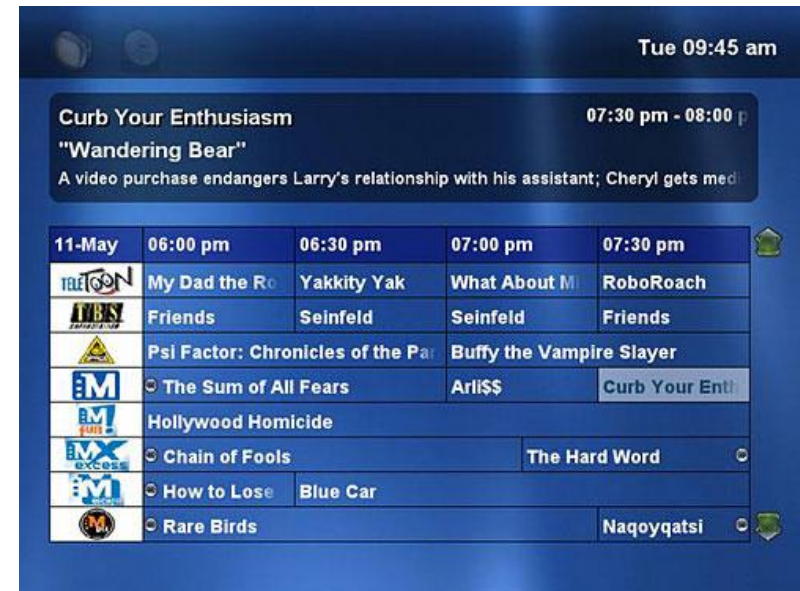
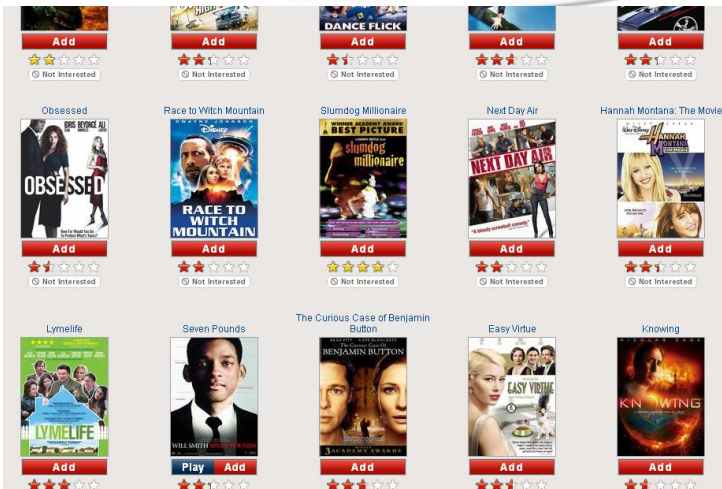


Questions?

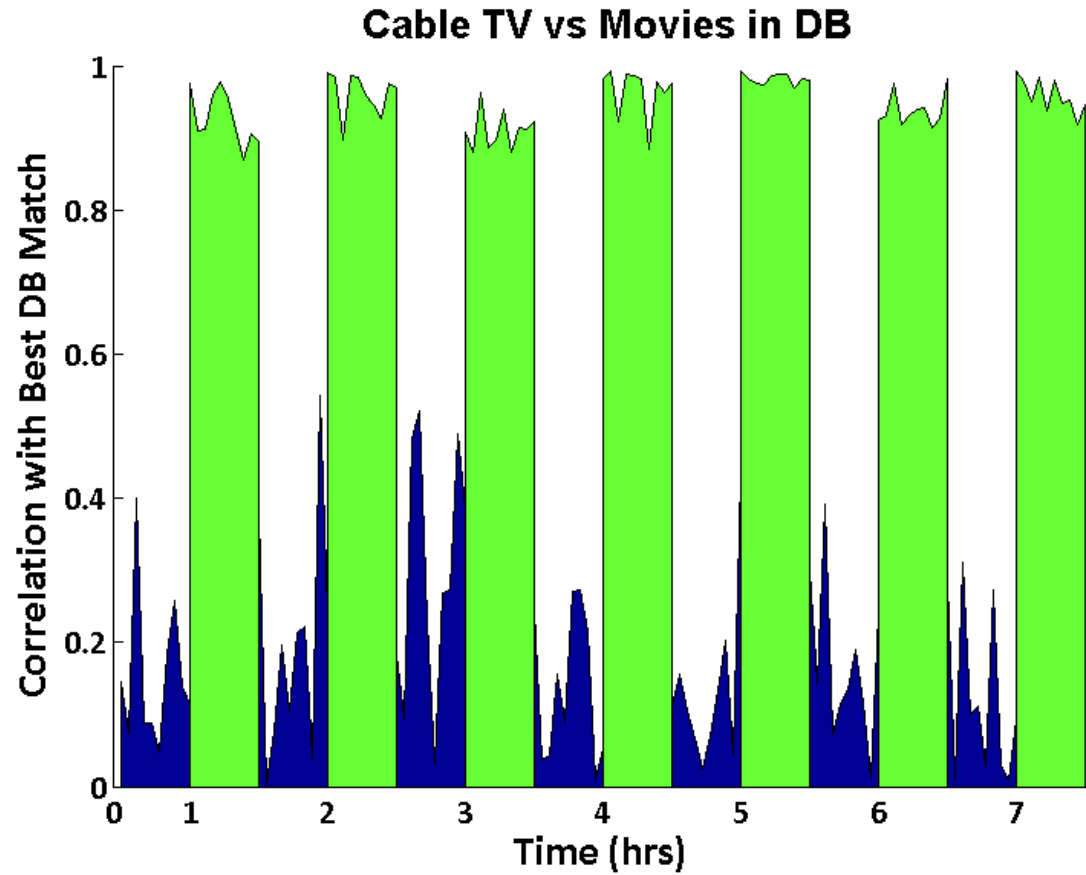


miro@cs.washington.edu

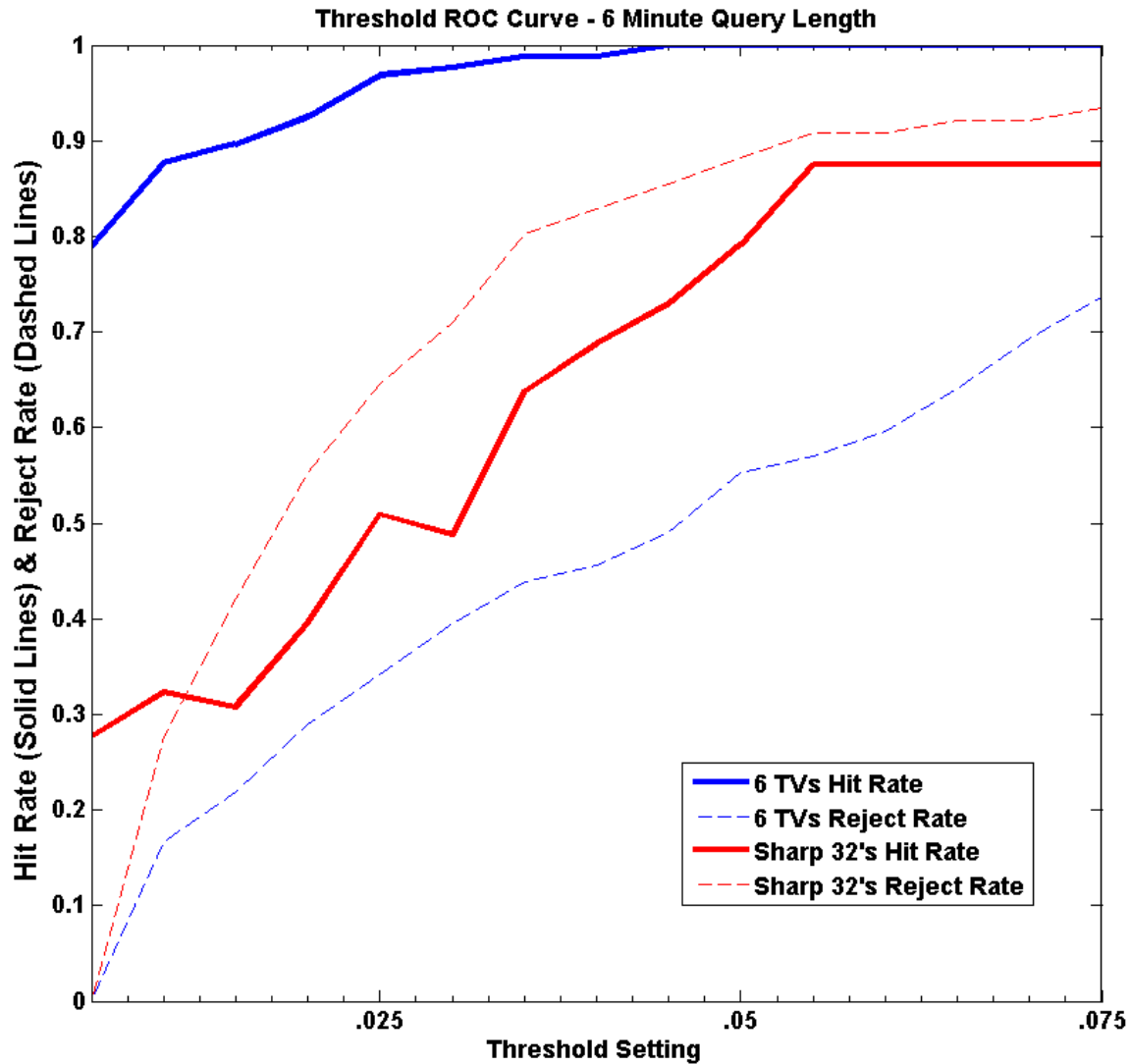
Does EMI matching scale?



Does EMI matching scale?



Sharp 32 and SNR



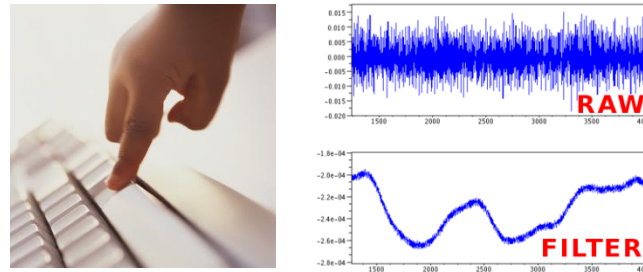
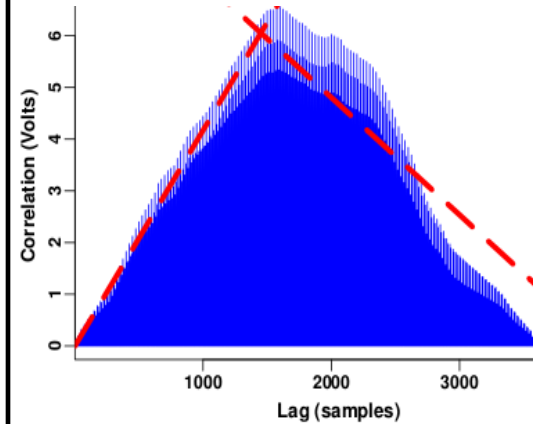
Related Work



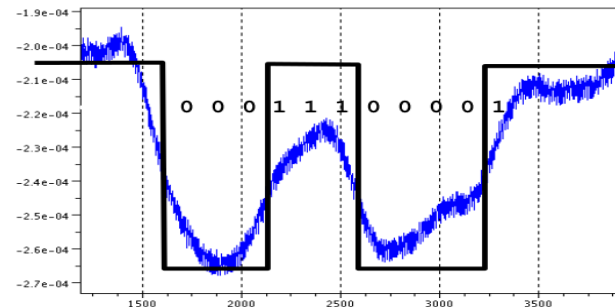
```
Stream Content
POST /api/w.html HTTP/1.1
Content-Type: application/x-www-form-urlencoded
Host: 85.214.93.99
Content-Length: 851

version=0.9&identity=[REDACTED]&msg=228320&values=
[{"meterdata": "00000285.8265446*kwh", "tickdelta": "00000285.8263451*kwh", "seconds": "399508724.94"},
{"meterdata": "00000285.8267477*kwh", "tickdelta": "00000285.8265446*kwh", "seconds": "399508726.94"},
{"meterdata": "00000285.8269547*kwh", "tickdelta": "00000285.8267477*kwh", "seconds": "399508728.94"},
{"meterdata": "00000285.8271654*kwh", "tickdelta": "00000285.8269547*kwh", "seconds": "399508730.94"},
{"meterdata": "00000285.8273806*kwh", "tickdelta": "00000285.8271654*kwh", "seconds": "399508732.95"},
{"meterdata": "00000285.8276015*kwh", "tickdelta": "00000285.8273806*kwh", "seconds": "399508734.95"},
{"meterdata": "00000285.8278268*kwh", "tickdelta": "00000285.8276015*kwh", "seconds": "399508736.95"},
{"meterdata": "00000285.8280557*kwh", "tickdelta": "00000285.8278268*kwh", "seconds": "399508738.95"}]
&now=399508746.98HTTP/1.1 200 OK
```

“Our research shows that the analysis of the household’s electricity usage profile does reveal what channel the TV set in the household was displaying. “



• | 0 | 0011000 | 0 | 1 | = letter 'a'

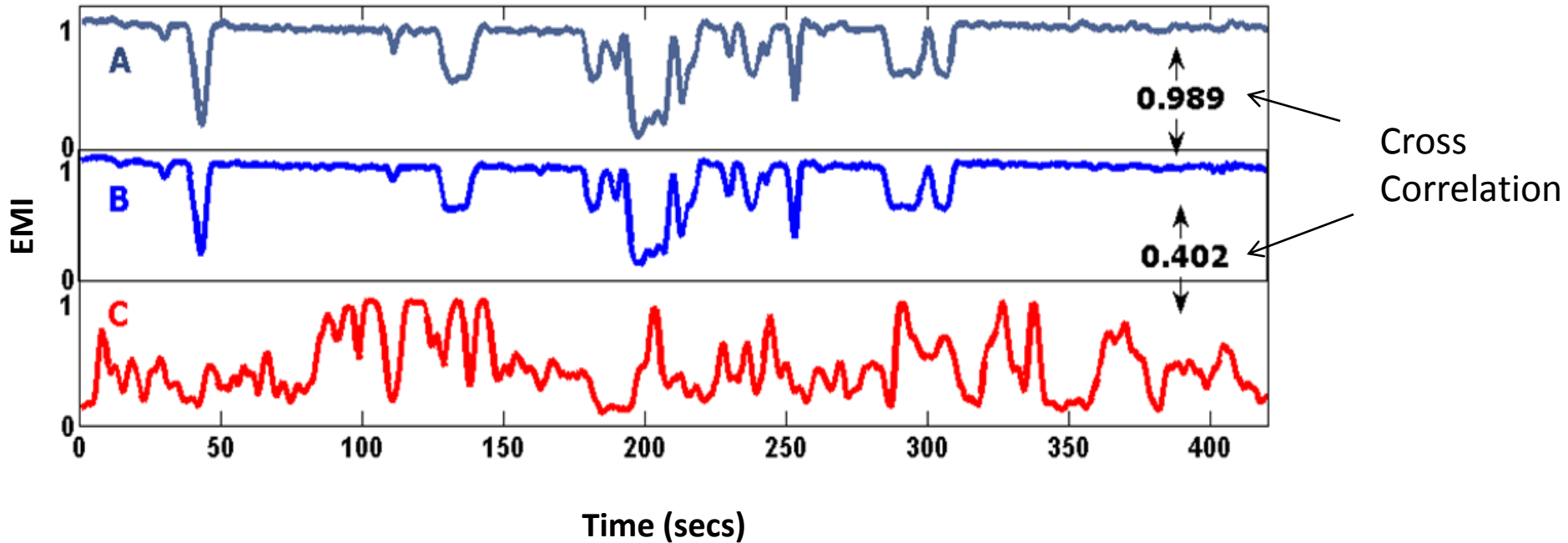


Target trace	Classifier		
	Length	Motif	Xcorr
centerpill2	X	✓	✓
centerpill5	X	✓	X
cnn3	✓	✓	✓
cnn9	✓	✓	✓
csumassedu4	✓	✓	X
csumassedu5	✓	✓	X
facebook4	✓	X	✓
facebook6	✓	X	✓
facebook8	✓	X	✓
gmail1	✓	✓	✓
gmail3	X	X	✓
gmail4	✓	X	✓
gmail7	X	✓	✓
google1	X	✓	✓
google2	✓	X	✓
google3	✓	X	✓
google6	✓	✓	✓
msnbc6	✓	X	✓
msnbc7	X	X	✓
msnbc8	✓	X	✓
youtube4	✓	X	X
youtube9	✓	✓	✓

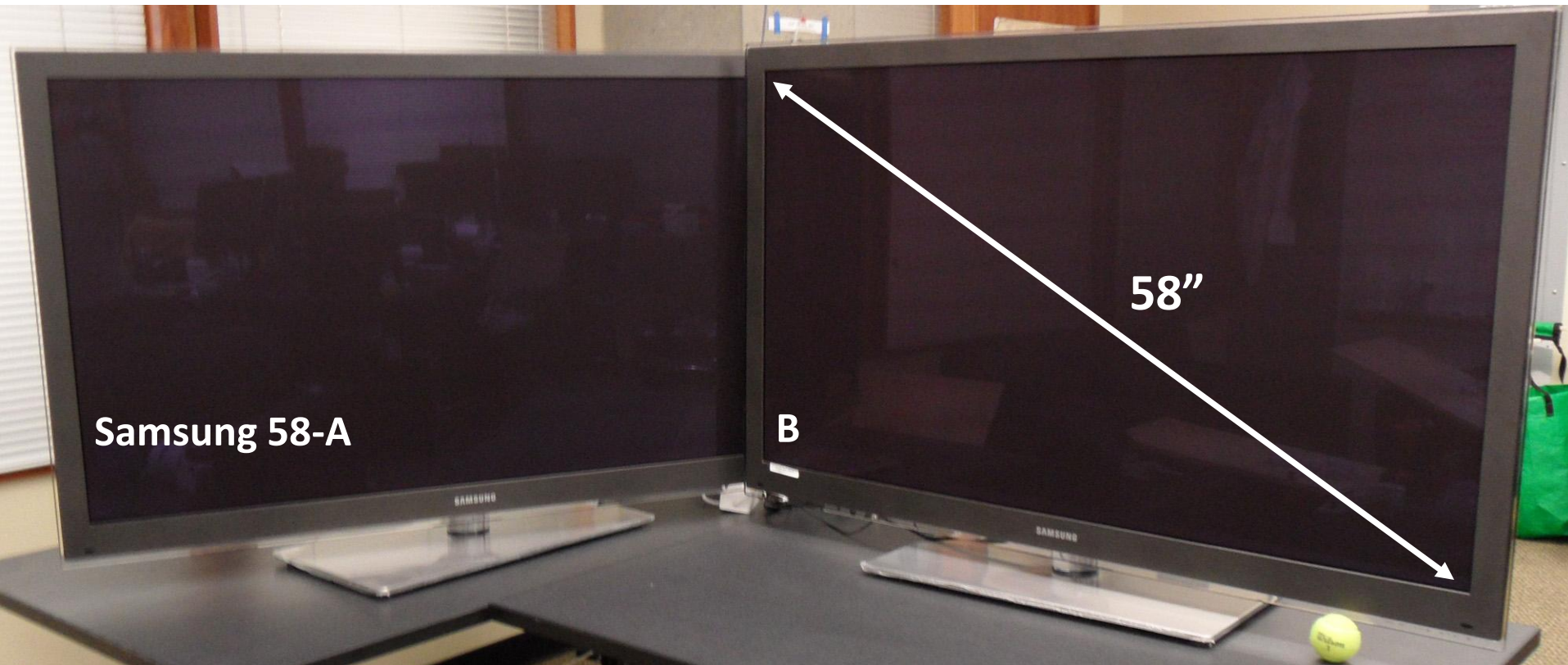
Q1: repeatable EMI from repeated screen content?

A & B : Lion King

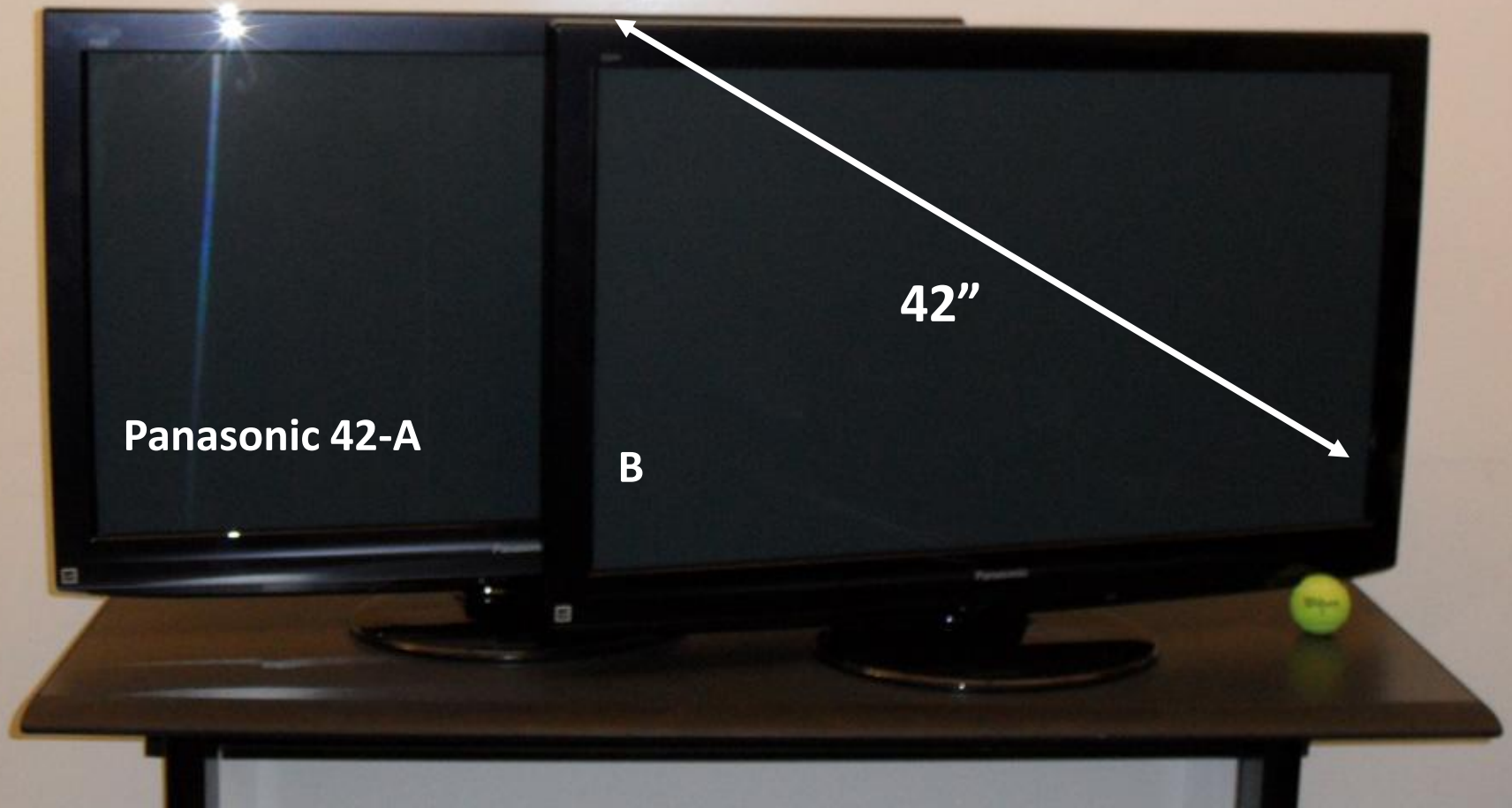
C: Bourne Ultimatum



TVs (1)



TVs (2)



TVs (3)

