

Using Library Modules in Verilog Designs

This tutorial explains how Altera's library modules can be included in Verilog-based designs, which are implemented by using the Quartus[®] II software.

Contents:

Example Circuit

Library of Parameterized Modules

Augmented Circuit with an LPM

Results for the Augmented Design

Practical designs often include commonly used circuit blocks such as adders, subtractors, multipliers, decoders, counters, and shifters. Altera provides efficient implementations of such blocks in the form of library modules that can be instantiated in Verilog designs. The compiler may recognize that a standard function specified in Verilog code can be realized using a library module, in which case it may automatically *infer* this module. However, many library modules provide functionality that is too complex to be recognized automatically by the compiler. These modules have to be instantiated in the design explicitly by the user.

Quartus[®] II software includes a *library of parameterized modules (LPM)*. The modules are general in structure and they are tailored to a specific application by specifying the values of general parameters.

Doing this tutorial, the reader will learn about:

- Library of parameterized modules (LPMs)
- Configuring an LPM for use in a circuit
- Instantiating an LPM in a designed circuit

The detailed examples in the tutorial were obtained using the Quartus II version 8.0, but other versions of the software can also be used.

1 Example Circuit

As an example, we will use the adder/subtractor circuit shown in Figure 1. It can add, subtract, and accumulate n -bit numbers using the 2's complement number representation. The two primary inputs are numbers $A = a_{n-1}a_{n-2} \cdots a_0$ and $B = b_{n-1}b_{n-2} \cdots b_0$, and the primary output is $Z = z_{n-1}z_{n-2} \cdots z_0$. Another input is the *AddSub* control signal which causes $Z = A + B$ to be performed when *AddSub* = 0 and $Z = A - B$ when *AddSub* = 1. A second control input, *Sel*, is used to select the accumulator mode of operation. If *Sel* = 0, the operation $Z = A \pm B$ is performed, but if *Sel* = 1, then B is added to or subtracted from the current value of Z . If the addition or subtraction operations result in arithmetic overflow, an output signal, *Overflow*, is asserted.

To make it easier to deal with asynchronous input signals, they are loaded into flip-flops on a positive edge of the clock. Thus, inputs A and B will be loaded into registers *Areg* and *Breg*, while *Sel* and *AddSub* will be loaded into flip-flops *SelR* and *AddSubR*, respectively. The adder/subtractor circuit places the result into register *Zreg*.

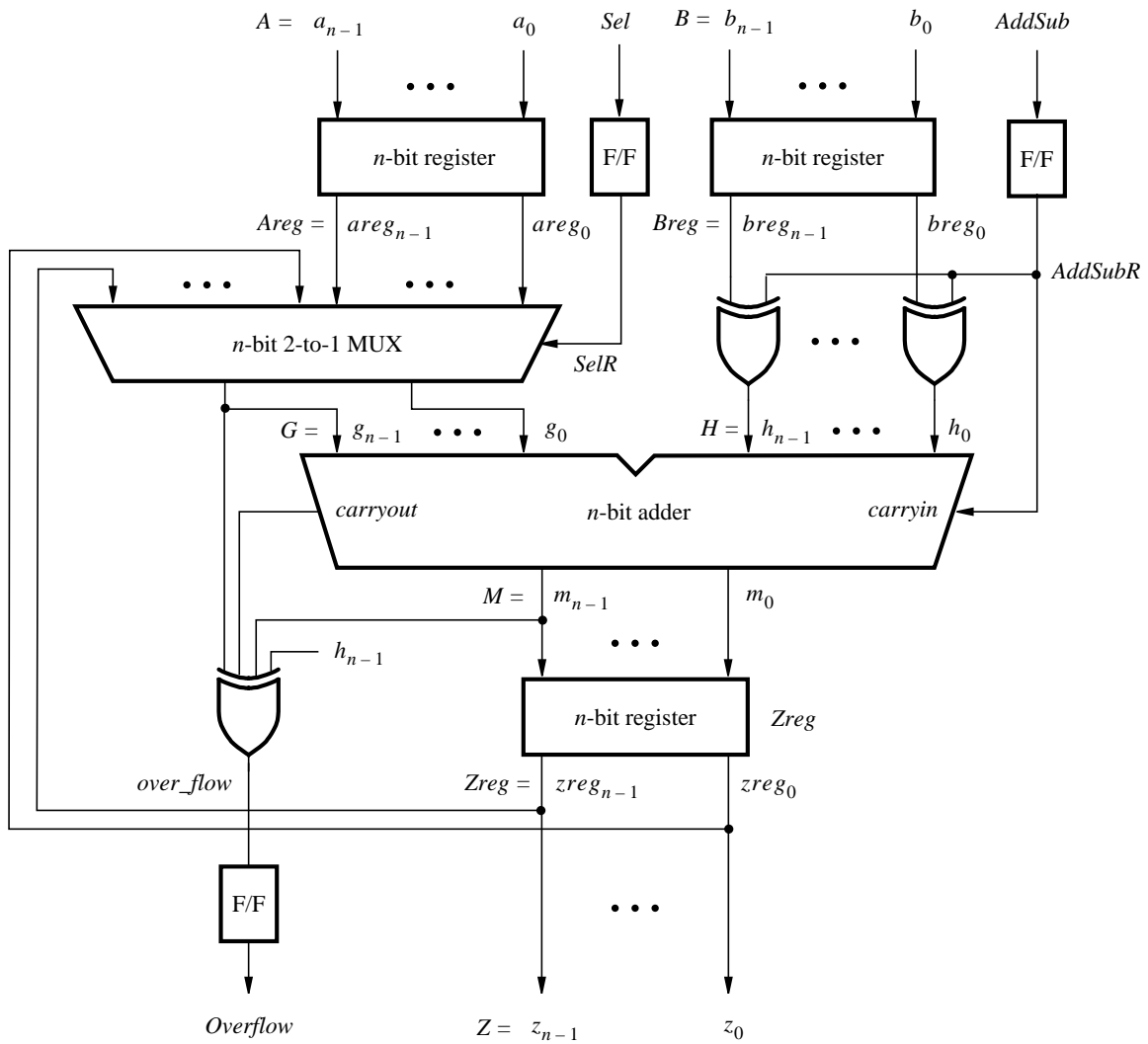


Figure 1. The adder/subtractor circuit.

The required circuit is described by the Verilog code in Figure 2. For our example, we use a 16-bit circuit as specified by $n = 16$. Implement this circuit as follows:

- Create a project *addersubtractor*.
- Include a file *addersubtractor.v*, which corresponds to Figure 2, in the project. For convenience, this file is provided in the directory *DE2_tutorials\design_files*, which is included on the CD-ROM that accompanies the DE2 board and can also be found on Altera's DE2 web pages.
- Choose the Cyclone II EP2C35F672C6 device, which is the FPGA chip on Altera's DE2 board.
- Compile the design.
- Simulate the design by applying some typical inputs.

```

// Top-level module
module addersubtractor (A, B, Clock, Reset, Sel, AddSub, Z, Overflow);
  parameter n = 16;
  input [n-1:0] A, B;
  input Clock, Reset, Sel, AddSub;
  output [n-1:0] Z;
  output Overflow;
  reg SelR, AddSubR, Overflow;
  reg [n-1:0] Areg, Breg, Zreg;
  wire [n-1:0] G, H, M, Z;
  wire carryout, over_flow;

// Define combinational logic circuit
  assign H = Breg ^ {n{AddSubR}};
  mux2to1 multiplexer (Areg, Z, SelR, G);
  defparam multiplexer.k = n;
  adderk nbit_adder (AddSubR, G, H, M, carryout);
  defparam nbit_adder.k = n;
  assign over_flow = carryout ^ G[n-1] ^ H[n-1] ^ M[n-1];
  assign Z = Zreg;

// Define flip-flops and registers
  always @(posedge Reset or posedge Clock)
    if (Reset == 1)
      begin
        Areg <= 0; Breg <= 0; Zreg <= 0;
        SelR <= 0; AddSubR <= 0; Overflow <= 0;
      end
    else
      begin
        Areg <= A; Breg <= B; Zreg <= M;
        SelR <= Sel; AddSubR <= AddSub; Overflow <= over_flow;
      end
    endmodule

// k-bit 2-to-1 multiplexer
module mux2to1 (V, W, Selm, F);
  parameter k = 8;
  input [k-1:0] V, W;
  input Selm;
  output [k-1:0] F;
  reg [k-1:0] F;

  always @(V or W or Selm)
    if (Selm == 0) F = V;
    else F = W;
endmodule

... continued in Part b

```

Figure 2. Verilog code for the circuit in Figure 1 (Part a).

```

// k-bit adder
module adderk (carryin, X, Y, S, carryout);
    parameter k = 8;
    input [k-1:0] X, Y;
    input carryin;
    output [k-1:0] S;
    output carryout;
    reg [k-1:0] S;
    reg carryout;

    always @(X or Y or carryin)
        {carryout, S} = X + Y + carryin;
endmodule

```

Figure 2. Verilog code for the circuit in Figure 1 (Part *b*).

2 Library of Parameterized Modules

The LPMs in the library of parameterized modules are general in structure and they can be configured to suit a specific application by specifying the values of various parameters. Select **Help > Megafunctions/LPM** to see a listing of the available LPMs. One of them is an adder/subtractor module called *lpm_add_sub megafunction*. Select this module to see its description. The module has a number of inputs and outputs, some of which may be omitted in a given application. Several parameters can be defined to specify a particular mode of operation. For example, the number of bits in the operands is specified in the parameter `LPM_WIDTH`. The `LPM_REPRESENTATION` parameter specifies whether the operands are to be interpreted as signed or unsigned numbers, and so on. Templates on how an LPM can be instantiated in a hardware description language are given in the description of the module. Using these templates is somewhat cumbersome, so Quartus II software provides a wizard that makes the instantiation of LPMs easy.

We will use the *lpm_add_sub* module to simplify our adder/subtractor circuit defined in Figures 1 and 2. The augmented circuit is given in Figure 3. The *lpm_add_sub* module, instantiated under the name *megaddsub*, replaces the adder circuit as well as the XOR gates that provide the input *H* to the adder. Since arithmetic overflow is one of the outputs that the LPM provides, it is not necessary to generate this output with a separate XOR gate.

To implement this adder/subtractor circuit, create a new directory named *tutorial_lpm*, and then create a project *addersubtractor2*. Choose the same Cyclone II EP2C35F672C6 device, to allow a direct comparison of implemented designs.

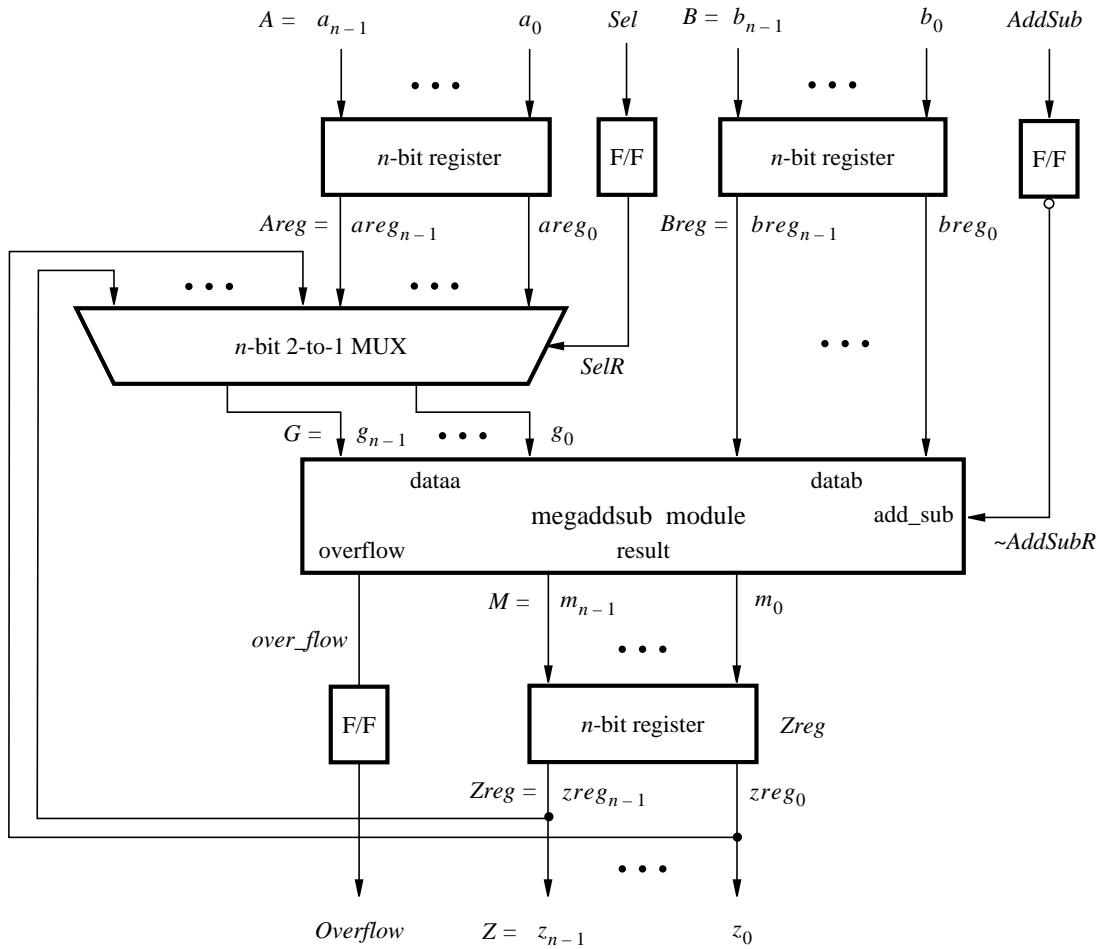


Figure 3. The augmented adder/subtractor circuit.

The new design will include the desired LPM subcircuit specified as a Verilog module that will be instantiated in the top-level Verilog design module. The Verilog module for the LPM subcircuit is generated by using a wizard as follows:

1. Select Tools > MegaWizard Plug-in Manager, which leads to a sequence of seven pop-up boxes in which the user can specify the details of the desired LPM.
2. In the box shown in Figure 4 indicate Create a new custom megafunction variation and click Next.

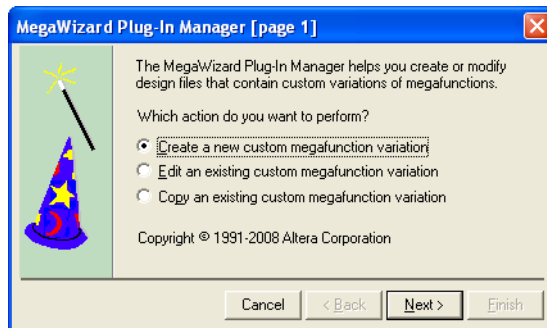


Figure 4. Choose to define an LPM.

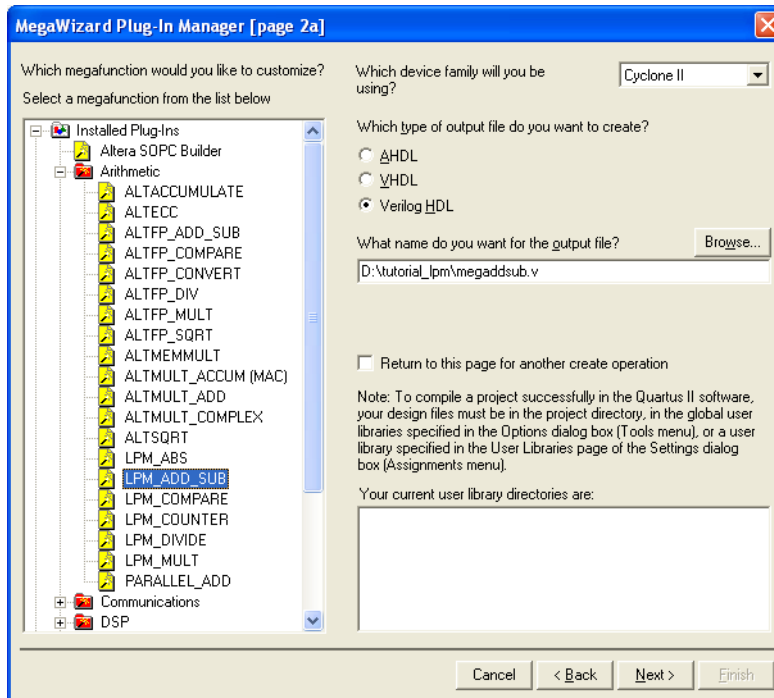


Figure 5. Choose an LPM from the available library.

3. The box in Figure 5 provides a list of the available LPMs. Expand the “arithmetic” sublist and select LPM_ADD_SUB. Choose Verilog HDL as the type of output file that should be created. The output file must be given a name; choose the name *megaddsub.v* and indicate that the file should be placed in the directory *tutorial_lpm* as shown in the figure. Press Next.

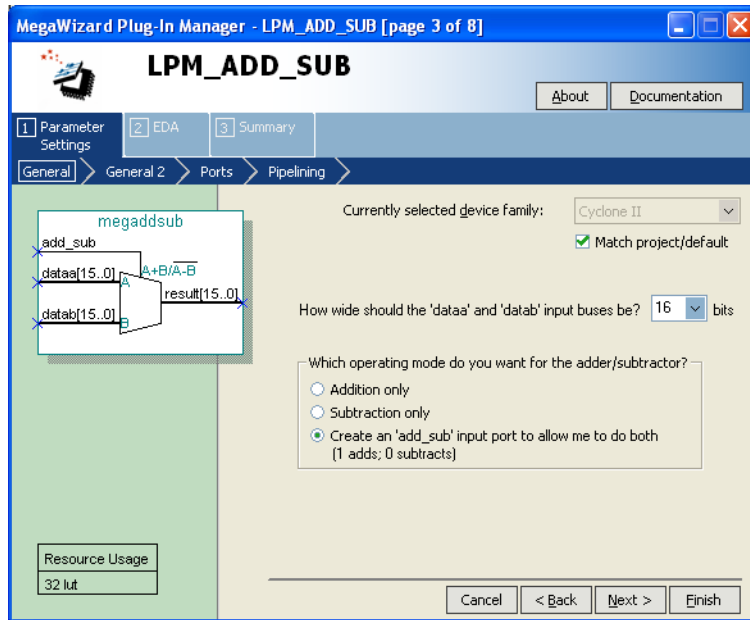


Figure 6. Specify the size of data inputs.

- In the box in Figure 6 specify that the width of the data inputs is 16 bits. Also, specify the operating mode in which one of the ports allows performing both addition and subtraction of the input operand, under the control of the *add_sub* input. A symbol for the resulting LPM is shown in the top left corner. Note that if *add_sub* = 1 then $result = A + B$; otherwise, $result = A - B$. This interpretation of the control input and the operation performed is different from our original design in Figures 1 and 2, which we have to account for in the modified design. Observe that we have included this change in the circuit in Figure 3. Click Next.

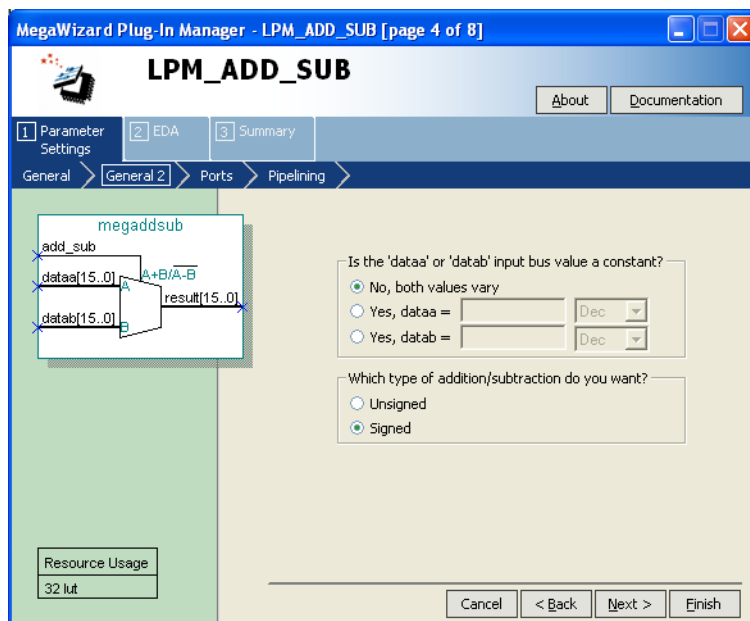


Figure 7. Further specification of inputs.

5. In the box in Figure 7, specify that the values of both inputs may vary and select **Signed** for the type of addition/subtraction. Click **Next**.

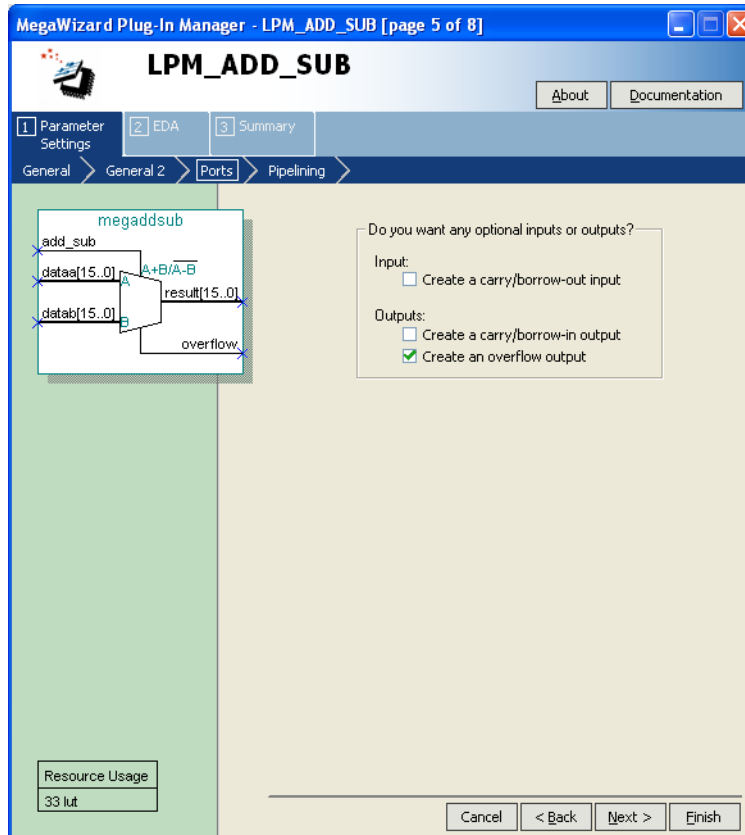


Figure 8. Specify the Overflow output.

6. The box in Figure 8 allows the designer to indicate optional inputs and outputs that may be specified. Since we need the overflow signal, make the **Create an overflow output** choice and press **Next**.

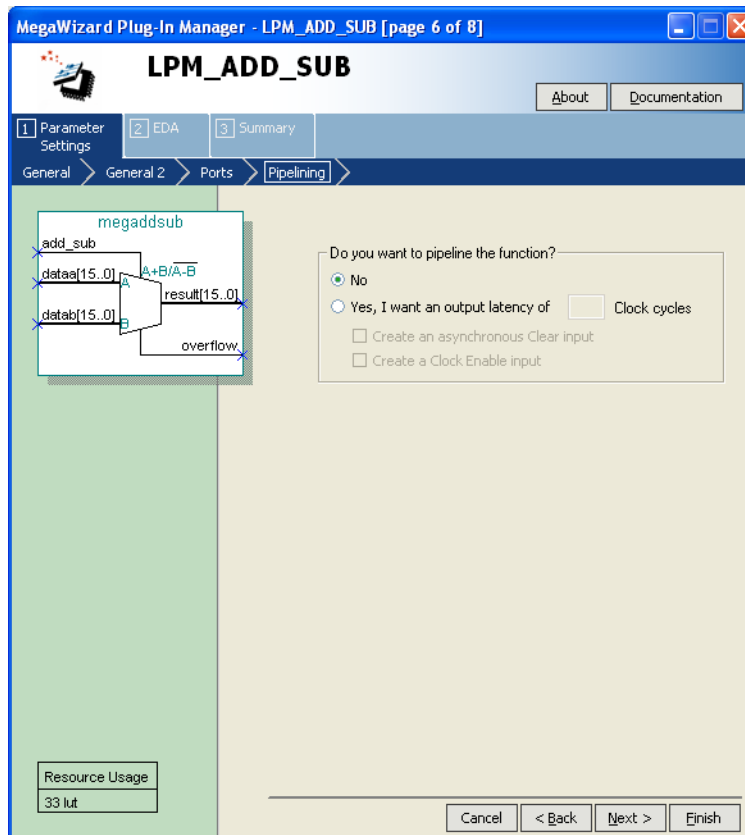


Figure 9. Refuse the pipelining option.

7. In the box in Figure 9 say **NO** to the pipelining option and click **Next**.
8. Figure 10 shows the simulation model files needed to simulate the generated design. Press **Next** to proceed to the final page.

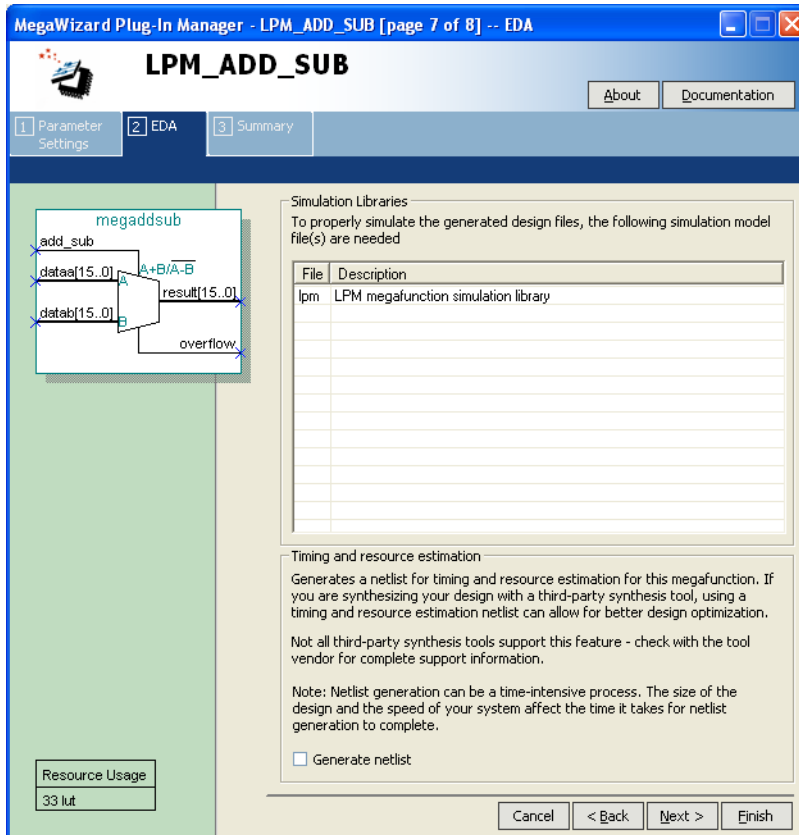


Figure 10. Simulation model files.

9. Figure 11 gives a summary which shows the files that the wizard will create. Press Finish to complete the process.

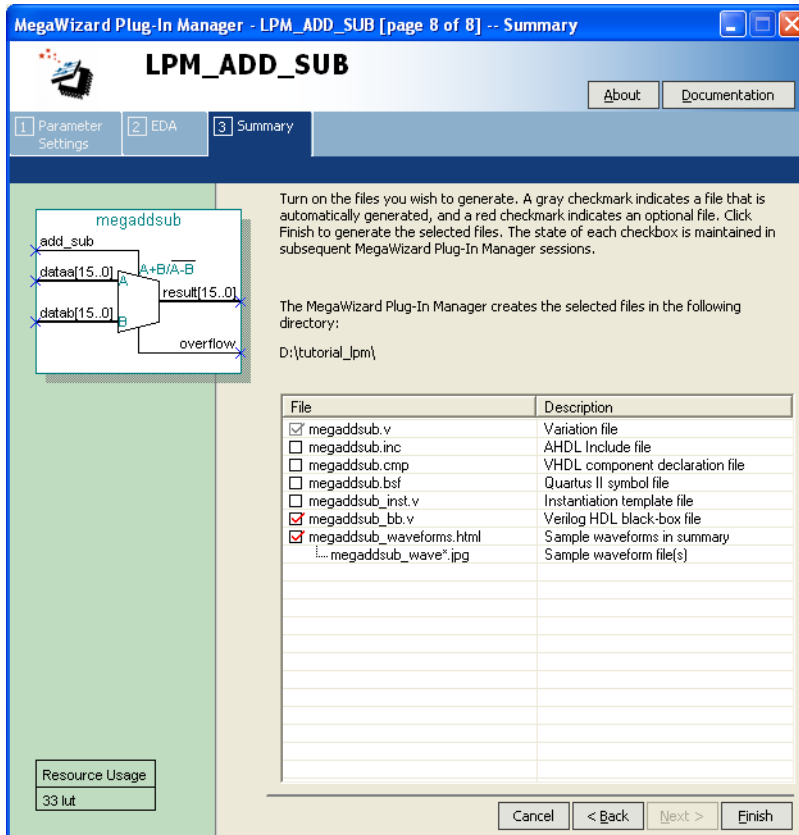


Figure 11. Files created by the wizard.

10. The box in Figure 12 may pop up. If it does, press **Yes** to add the newly generated files to the project.

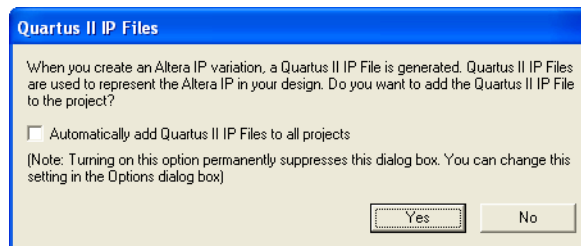


Figure 12. Add the new files to the project.

3 Augmented Circuit with an LPM

We will use the file *megaddsub.v* in our modified design. Figure 13 depicts the Verilog code in this file; note that we have not shown the comments in order to keep the figure small.

```

// Adder/subtractor module created by the MegaWizard
module megaddsub (
    add_sub,
    dataa,
    datab,
    result,
    overflow);

    input add_sub;
    input [15:0] dataa;
    input [15:0] datab;
    output [15:0] result;
    output overflow;
    wire sub_wire0;
    wire [15:0] sub_wire1;
    wire overflow = sub_wire0;
    wire [15:0] result = sub_wire1[15:0];

    lpm_add_sub lpm_add_sub_component (
        .dataa (dataa),
        .add_sub (add_sub),
        .datab (datab),
        .overflow (sub_wire0),
        .result (sub_wire1));
    defparam
        lpm_add_sub_component.lpm_width = 16,
        lpm_add_sub_component.lpm_direction = "UNUSED",
        lpm_add_sub_component.lpm_type = "LPM_ADD_SUB",
        lpm_add_sub_component.lpm_hint = "ONE_INPUT_IS_CONSTANT=NO";
endmodule

```

Figure 13. Verilog code for the ADD_SUB LPM.

The modified Verilog code for the adder/subtractor design is given in Figure 14. Put this code into a file *adder-subtractor2.v* under the directory *tutorial_lpm*. For convenience, the required file *addersubtractor2.v* is provided in the directory *DE2_tutorials\design_files*, which is included on the CD-ROM that accompanies the DE2 board and can also be found on Altera's DE2 web pages. The differences between this code and Figure 2 are:

- The **assign** statements that define the *overflow* signal and the XOR gates (along with the signal defined as **wire H**) are no longer needed.
- The *adderk* instance of the adder circuit is replaced by *megaddsub*. Note that the *dataa* and *datab* inputs shown in Figure 6 are driven by the *G* and *Breg* vectors, respectively. Also, the inverted version of the *AddSubR* signal is specified to conform with the usage of this control signal in the LPM.
- The *adderk* module is deleted from the code.

```

// Top-level module
module addersubtractor2 (A, B, Clock, Reset, Sel, AddSub, Z, Overflow);
  parameter n = 16;
  input [n-1:0] A, B;
  input Clock, Reset, Sel, AddSub;
  output [n-1:0] Z;
  output Overflow;
  reg SelR, AddSubR, Overflow;
  reg [n-1:0] Areg, Breg, Zreg;
  wire [n-1:0] G, M, Z;
  wire over_flow;

// Define combinational logic circuit
mux2to1 multiplexer (Areg, Z, SelR, G);
  defparam multiplexer.k = n;
megaddsub nbit_adder (~AddSubR, G, Breg, M, over_flow);
assign Z = Zreg;

// Define flip-flops and registers
always @(posedge Reset or posedge Clock)
  if (Reset == 1)
  begin
    Areg <= 0; Breg <= 0; Zreg <= 0;
    SelR <= 0; AddSubR <= 0; Overflow <= 0;
  end
  else
  begin
    Areg <= A; Breg <= B; Zreg <= M;
    SelR <= Sel; AddSubR <= AddSub; Overflow <= over_flow;
  end
endmodule

// k-bit 2-to-1 multiplexer
module mux2to1 (V, W, Selm, F);
  parameter k = 8;
  input [k-1:0] V, W;
  input Selm;
  output [k-1:0] F;
  reg [k-1:0] F;

  always @(V or W or Selm)
    if (Selm == 0) F = V;
    else F = W;
endmodule

```

Figure 14. Verilog code for the circuit in Figure 3.

If the *megaddsub.v* file has not been included in the project (e.g. if you answered NO in the box in Figure 12, or possibly if the box did not show up at all), you need to include it manually. To include the *megaddsub.v* file in the project, select Project > Add/Remove Files in Project to reach the window in Figure 15. The file *addersubtractor2.v* should already be listed as being included in the project. Browse for the other files by clicking the button File name: ... to reach the window in Figure 16. Select the file *megaddsub.v* and click Open, which returns to the window in Figure 15. Click Add to include the file and then click OK. Now, the modified design can be compiled and simulated in the usual way.

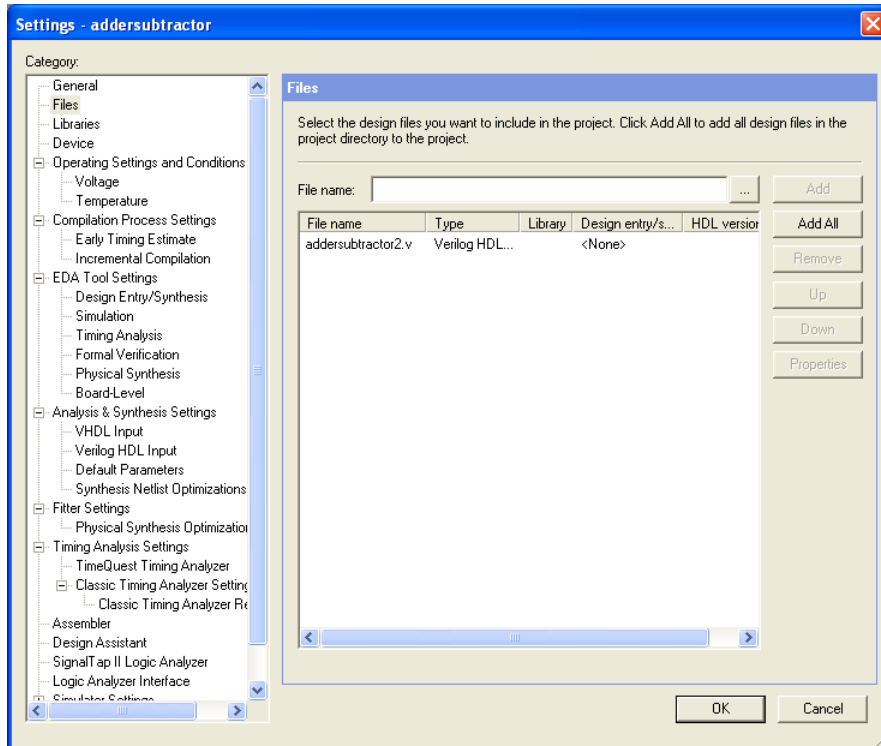


Figure 15. Inclusion of the new file in the project.

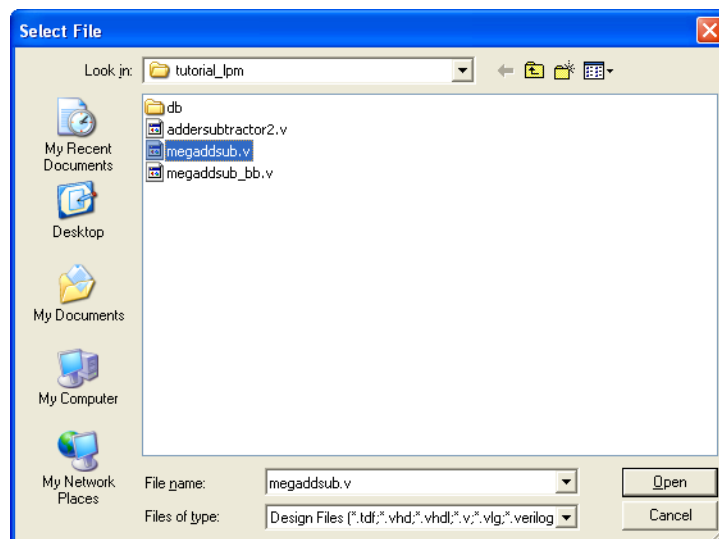
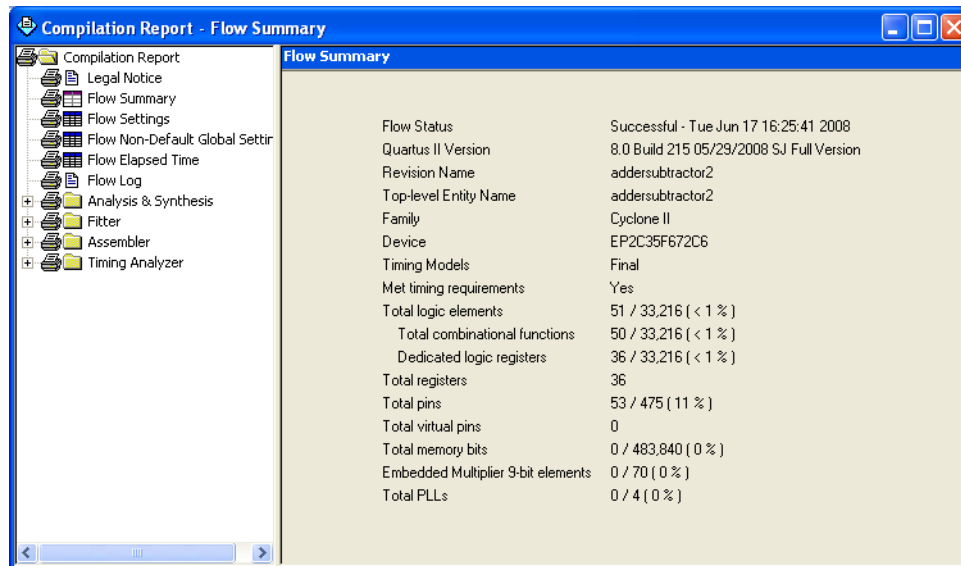


Figure 16. Specify the *megaddsub.v* file.

4 Results for the Augmented Design

Compile the design and look at the summary, which is depicted in Figure 17. Observe that the modified design is implemented in 51 logic elements, rather than 52 obtained when using the code in Figure 2. The reduction in the number of logic elements is small because our example is rather simple. In more complex designs the advantage of using LPMs is likely to be more pronounced. The reason is that the LPMs implement the required logic more efficiently than what the compiler can do from simple Verilog code, such as the code in Figure 2. The user should consider using an LPM whenever a suitable one exists.



Flow Summary	
Flow Status	Successful - Tue Jun 17 16:25:41 2008
Quartus II Version	8.0 Build 215 05/29/2008 SJ Full Version
Revision Name	addersubtractor2
Top-level Entity Name	addersubtractor2
Family	Cyclone II
Device	EP2C35F672C6
Timing Models	Final
Met timing requirements	Yes
Total logic elements	51 / 33,216 (< 1 %)
Total combinational functions	50 / 33,216 (< 1 %)
Dedicated logic registers	36 / 33,216 (< 1 %)
Total registers	36
Total pins	53 / 475 (11 %)
Total virtual pins	0
Total memory bits	0 / 483,840 (0 %)
Embedded Multiplier 9-bit elements	0 / 70 (0 %)
Total PLLs	0 / 4 (0 %)

Figure 17. Compilation Results for the Augmented Circuit.

Copyright ©2008 Altera Corporation. All rights reserved. Altera, The Programmable Solutions Company, the stylized Altera logo, specific device designations, and all other words and logos that are identified as trademarks and/or service marks are, unless noted otherwise, the trademarks and service marks of Altera Corporation in the U.S. and other countries. All other product or service names are the property of their respective holders. Altera products are protected under numerous U.S. and foreign patents and pending applications, mask work rights, and copyrights. Altera warrants performance of its semiconductor products to current specifications in accordance with Altera's standard warranty, but reserves the right to make changes to any products and services at any time without notice. Altera assumes no responsibility or liability arising out of the application or use of any information, product, or service described herein except as expressly agreed to in writing by Altera Corporation. Altera customers are advised to obtain the latest version of device specifications before relying on any published information and before placing orders for products or services.

This document is being provided on an "as-is" basis and as an accommodation and therefore all warranties, representations or guarantees of any kind (whether express, implied or statutory) including, without limitation, warranties of merchantability, non-infringement, or fitness for a particular purpose, are specifically disclaimed.